



Volvo Construction Equipment

ECR145E, ECR235E

Volvo Excavators 14.4-16.7 t / 31,770-36,790 lb 121 hp | 23.7-27.9 t / 52,250-61,440 lb 173 hp



A passion for performance

At Volvo Construction Equipment, we're not just coming along for the ride. Developing products and services that raise productivity – we are confident we can lower costs and increase profits for customers around the globe. Part of the Volvo Group, we are passionate about innovative solutions to help you work smarter – not harder.

Helping you to do more

Doing more with less is a trademark of Volvo Construction Equipment. High productivity has long been married to low energy consumption, ease of use and durability. When it comes to lowering life-cycle costs, Volvo is in a class of its own.

Designed to fit your needs

There is a lot riding on creating solutions that are suited to the particular needs of different industry applications. Innovation often involves high technology – but it doesn't always have to. Some of our best ideas have been simple, based on a clear and deep understanding of our customers' working lives.



You learn a lot in 180 years

Over the years, Volvo has advanced solutions that have revolutionized the use of construction equipment. No other name speaks Safety louder than Volvo. Protecting operators, those around them and minimizing our environmental impact are traditional values that continue to shape our product design philosophy.

We're on your side

We back the Volvo brand with the best people. Volvo is truly a global enterprise, one that is on standby to support customers quickly and efficiently – wherever they are.

We have a passion for performance.

A strong, dedicated, capable dealer network.

Our dealers are strategically located throughout North America to provide the equipment you need and the parts and service support you demand for a productive and profitable operation.

The strength of our dealer network is enhanced with extensive individualized product support training at our best-in-class Customer Center in Shippensburg and through hands-on training. Using a great Product Demonstration Center featuring a dedicated area for most common applications, visitors operate equipment from our entire product line under a variety of simulated working conditions. This facility is in year-round use by our dealers and customers.

Building the best starts right here.

The products designed and manufactured by Volvo Construction Equipment have their beginnings at the most advanced Research & Design centers in the industry. Volvo CE machines are designed in 11 R&D centers and produced in 15 manufacturing facilities across the world.

The major R&D center and manufacturing plant in the Americas is located in Shippensburg, Pennsylvania. This facility has been in operation for over 30 years and – with its recently added 200,000 sq. ft. expansion – now covers 570,000 sq. ft. on an 80 acre campus. Dedicated work teams and highly advanced technologies and techniques using the Volvo Production System ensure continuous quality improvements, labor savings and cost control to reach the high quality that our customers have come to expect from Volvo.





Volvo Trucks



Renault Trucks



Mack Trucks



UD Trucks



Volvo Buses



Volvo Construction Equipment



Volvo Penta



Volvo Financial Services

Confined space, big potential

The optimized compact design of the ECR145E/ECR235E offers a short swing radius for operating in confined spaces without compromising on performance. The machine's Tier 4 Final engine and enhanced hydraulics system results in smoother operation and increased productivity.

Tractive force

For more power and better productivity, the machine's system design – specific to the ECR145E/ECR235E – and durable undercarriage ensure impressive tractive force when climbing gradients and traveling over rough or soft terrain.



Tier 4 Final engine

Featuring proven advanced technology, and built on decades of experience, Volvo's robust Tier 4 Final engine boasts more power – while reducing both fuel consumption and emissions to deliver superior quality, reliability and durability.



Working mode

Volvo's integrated working mode system, which now includes the G4 mode, optimizes fuel efficiency, reduces running costs, increases productivity and performance. Choose the best work mode for the task at hand – select from I (idle), F (fine), G (general) and H (heavy).



Faster cycle time

Do more in less time as the enhanced hydraulics system increases pump power for faster and smoother operation, resulting in quicker cycle times and higher productivity.





SHORT SWING RADIUS



An optimized compact design offers a short swing radius which allows safe operation in confined spaces. Perfect for maneuvering in and out of narrow areas with ease while increasing your uptime and productivity.



NEW COMFORT CAB



The newly designed ROPS certified cab features a vast glass area improving front and side visibility for easier machine operation. The comfort cab also offers a wider entrance, more legroom, spacious interior and new ergonomic controls.

Sight, space and sound

Operate in a comfortable, low noise environment to increase efficiency and reduce operator fatigue. The larger ROPS certified cab has a wider entrance for easier access, more legroom and a more spacious interior, while the responsive climate control system provides a comfortable working environment.

Climate control system

For easier controllability and operator comfort the machine features an improved climate control system displayed on the 8" LCD monitor. The industry-leading air circulation and defrosting system speeds up the heating and cooling of the cab for a more comfortable environment.



Better visibility

For a clear view of your job site, the cab's slim pillars and large expanses of glass result in excellent all-round visibility. Well positioned and a longer vertical windshield wiper provides the best possible coverage of the front window for comfortable and accurate operating.



Keypad

The keypad allows the operator to navigate through different settings on the 8" LCD monitor and activate machine functions in a safe and comfortable way. The functionality of the camera, air conditioning and lights can be customized through the keypad and configurations can be saved for added convenience. Bluetooth and a hands-free function have also been added so the operator can connect to wireless functions.



Shortcut button

The windshield wipers, camera, and audio mute function can be assigned to a shortcut button located on the joystick, so the operator can control the selected function by simply pressing a button.



Own it all

Secure more profit and reduce your Total Cost of Ownership by lowering fuel consumption and increasing uptime with the ECR145E/ECR235E short swing radius excavator. The winning combination of an electronically enhanced hydraulic system, improved ECO mode, convenient service access and easy maintenance, all contribute to lower costs and higher productivity.

Auto idle and engine shutdown

Engine speed is reduced to idle when the controls are inactive for a pre-set amount of time between 3-20 seconds – reducing fuel consumption and noise. If the machine is left idle for longer, the optional auto engine shutdown feature will automatically turn off the machine.



ECO mode

For better fuel efficiency without sacrificing performance and power in most operating conditions, Volvo's unique and intelligent ECO mode optimizes the hydraulic system to reduce flow and pressure losses in order to reduce fuel consumption. ECO mode is automatically selected but can be switched off via the keypad.



Safer access

The machine features well-positioned punched anti-slip plates, handrails and foldable guardrails* for superior grip and added safety. The design facilitates easy inspection and maintenance to promote safety. *ECR235E only



Easy service access

To increase the longevity of your machine, it's important to carry out regular service checks. Volvo has grouped filters and centralized greasing points, which are accessible from the ground for easy access. Maximize machine uptime and avoid any unwanted costs.





ENHANCED HYDRAULIC SYSTEM



The optimized hydraulics system combined with the fully electronic control system and advanced ECO mode, matches engine power, improves controllability and cycle times. This results in better fuel efficiency and productivity.



BUCKETS GP/HD



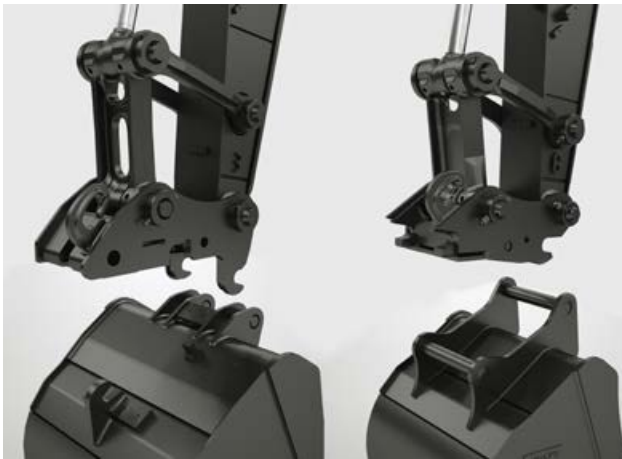
Volvo's buckets are the perfectly matched tool for digging and re-handling in all working conditions. Choose from durable General Purpose or Heavy-duty buckets, providing maximum productivity, long life and feature original Volvo wear components.

Mix and match versatility

Maximize your productivity and profitability with Volvo's ECR145E/ECR235E excavators and a range of durable attachments. Increase your versatility, access more applications and perform a variety of tasks on one job – all while experiencing faster cycle times and excellent control.

Quick Coupler range

Volvo offers a full range of quick couplers, including its dedicated S-type and symmetrical couplers that reduce a loss of break-out force and perfectly match Volvo attachments. In addition, the Volvo universal quick coupler picks up a variety of attachments from various manufacturers – all without leaving the comfort of your cab.



Hydraulic Breakers

The HB-Series of hydraulic breakers are optimized to the specific weights of Volvo machines and tailored to Volvo quick couplers for swift, safe and simple attachment changes. They are available with a full assortment of tools.



Auxiliary piping

To achieve the correct flow and superior pressure for hydraulic attachments such as mowers, grinders, shears, crushers and tilt rotators, the machine can be factory fitted with a wide variety of hydraulic lines, using breaker and shear piping as well as rotator piping.



Attachment management system

The password protected attachment management system allows storage for up to 20 different attachments. The system allows the operator to pre-set hydraulic flow and pressure inside the cab through the monitor, which ensures the use of various attachments for increased versatility.



Dig, swing, load, move

SHORT SWING RADIUS



The short swing radius design allows safe and concise operation in confined spaces.

Lifetime Frame & Structure Warranty

We believe in the quality of our products and are passing that on to you through the Lifetime Frame and Structure Warranty.

Find out more:
volvoce.com/frameandstructure

Working mode

Volvo's integrated working mode system, now includes the G4 mode, optimizing fuel efficiency, productivity and performance.

Quick coupler

A full range of quick couplers reduce a loss of break-out force and perfectly match Volvo attachments.

BUCKETS



Volvo's buckets are the perfectly matched tool for digging and re-handling in all working conditions.

CUSTOMER SUPPORT AGREEMENTS



Customer Support Agreements offer preventive maintenance, total repairs and a number of uptime services.



Better visibility

For a clear view of your job site, the cab's slim pillars and large expanses of glass result in excellent all-round visibility.

Short cut button

The windshield wipers, camera and audio mute function can be assigned to a shortcut button located on the joystick.

COMFORT CAB



The newly designed ROPS certified cab has improved all-round visibility, more space and ergonomic controls.

Climate control system

The industry-leading air circulation and defrosting system speeds up the heating and cooling of the cab.

Safer access

Punched anti-slip plates, handrails and foldable guardrails* provide superior grip and added safety.

*ECR235E only

Tier 4 Final engine

Volvo's robust Tier 4 Final engine boasts more power while reducing fuel consumption and emissions.

Diesel Exhaust Fluid (DEF)

Volvo offers a total DEF solution that is quality assured, cost efficient and easily accessible.

ENHANCED HYDRAULICS



The hydraulics system, fully electronic control system and advanced ECO mode, result in better fuel efficiency and productivity.



Adding value to your business

Being a Volvo customer means having a complete set of services at your fingertips. Volvo can offer you a long-term partnership, protect your revenue and provide a full range of customer solutions using high quality parts, delivered by passionate people. Volvo is committed to increasing the positive return on your investment and maximizing uptime.



Complete Solutions

Volvo has the right solution for you. So why not let us provide all your needs throughout the whole life cycle of your machine? By listening to your requirements, we can reduce your total cost of ownership and increase your revenue.



Genuine Volvo Parts

Our attention to detail is what makes us stand out. This proven concept acts as a solid investment in your machine's future. Parts are extensively tested and approved because every part is vital for uptime and performance. Only by using Genuine Volvo Parts, can you be sure that your machine retains the renowned Volvo quality.



Service Network

In order to respond to your needs faster, a Volvo expert is on their way to your job site from one of our Volvo facilities. With our extensive infrastructure of technicians, workshops and dealers, Volvo has a comprehensive network to fully support you using local knowledge and global experience.





CUSTOMER SUPPORT AGREEMENT



The range of Customer Support Agreements offer preventive maintenance, total repairs and a number of uptime services. Volvo uses the latest technology to monitor machine operation and status, giving you advice to increase your profitability. By having a Customer Support Agreement you are in control of your service costs.

Volvo ECR145E, ECR235E in detail

Engine				
The latest generation, Volvo engine Tier 4f / Stage IV emissions compliant diesel engine fully meets the demands of the latest, emissions regulations. Featuring Volvo Advanced Combustion Technology (V-ACT), it is designed to deliver superior performance and fuel efficiency. The engine uses precise, high pressure fuel injectors, turbo charger and air-to-air intercooler, and electronic engine controls to optimize machine performance. Air Filter: 3-stage with pre-cleaner Automatic Idling System: Reduces engine speed to idle when the levers and pedals are not activated resulting in less fuel consumption and low cab noise levels.				

ECR145E				
Engine	Volvo		D4J	
Max power at		r/min	2,000	
Net, ISO 9249/SAE J1349	kW	hp	89	119
Gross, ISO 14396/SAE J1995	kW	hp	90	121
Max torque	Nm	lbf ft	566	417
at engine speed		r/min	1,500	
No. of cylinders			4	
Displacement	l	in ³	4.0	244
Bore	mm	in	101	3.98
Stroke	mm	in	126	4.96

ECR235E				
Engine	Volvo		D6J	
Max power at		r/min	1,800	
Net, ISO 9249/SAE J1349	kW	hp	128	172
Gross, ISO 14396/SAE J1995	kW	hp	129	173
Max torque	Nm	lbf ft	850	627
at engine speed		r/min	1,350	
No. of cylinders			6	
Displacement	l	in ³	5.7	348
Bore	mm	in	98	3.86
Stroke	mm	in	126	4.96

Electrical system	ECR145E	ECR235E
Well protected high-capacity electrical system. Waterproof double-lock harness plugs are used to secure corrosion-free connections. The main relays and solenoid valves are shielded to prevent damage. The master switch is standard. Contronics provides advanced monitoring of machine functions and important diagnostic information.		
Voltage	V	24 24
Batteries	V / Ah	2 x 12 / 100 2 x 12 / 150
Alternator	V / Ah	28 / 110 28 / 110
Start motor	V / kW	24 x 5.5 24 x 5.5

Swing system	ECR145E	ECR235E
The swing system uses an axial piston motors, driving a planetary gearbox for maximum torque. An automatic holding brake and anti-rebound valve are standard		
Max. slew speed	r/min	12.7 12
Max. slew torque	kNm lbf ft	41.9 30,910 83.0 61,220

Drive	ECR145E	ECR235E
Each track is powered by an automatic two-speed shift travel motor. The track brakes are multi-disc, spring-applied and hydraulic released. The travel motor, brake and planetary gears are well protected within the track frame.		
Max. drawbar pull	kN lbf	119 26,760 208.9 46,970
Max. travel speed	km/h mph	3.0/5.5 1.9/3.4
Gradeability	°	35

Undercarriage	ECR145E	ECR235E
Robust X-shaped frame with greased and sealed track chains as standard.		
Track shoe		2 x 46 2 x 49
Link pitch	mm in	171 6.8 190 7.5
Shoe width, triple grouser	mm in	500 20 600 24 600 24 700 28 750 30 800 32 900 36
Shoe width, triple grouser, HD	mm in	600 24 700 28 700 28 600 24
Shoe width, double grouser	mm in	- - 700 28
Shoe width, rubber grouser	mm in	500 20 600 24
Bottom rollers		2 x 7 2 x 8
Top rollers		2 x 1 2 x 2

Hydraulic system

The hydraulics system, combined with the fully electronic control system and advanced ECO mode, has been optimized to work in harmony with engine to match the engine power, reduce power loss and improve controllability and response time.

The following important functions are included in the system:

Summation system: Combines the flow of both hydraulic pumps to ensure quick cycle times and high productivity.

Arm priority: Gives priority to the arm operation for faster cycle times in leveling and for increased bucket filling when digging.

Swing priority: Gives priority to swing functions for faster simultaneous operations.

Regeneration system: Prevents cavitation and provides flow to other movements during simultaneous operations for maximum productivity.

Power boost: All digging and lifting forces are increased.

Holding valves: Boom and arm holding valves prevent the digging equipment from creeping.

			ECR145E		ECR235E	
Main pump, Type 2 x variable displacement axial piston pumps						
Maximum flow	l/min	gpm	2 x 124	2 X 33	2 x 207	2 x 55
Pilot pump, Type Gear pump						
Maximum flow	l/min	gpm	1 x 20	1 x 5	1 x 18	1 x 5
Relief valve setting:						
Standard pressure	MPa	psi	32.4	4,690	34.3	4,980
Power boost	MPa	psi	34.3	4,980	36.3	5,260
Travel circuit	MPa	psi	34.3	4,980	34.3	4,980
Slew circuit	MPa	psi	26.5	3,840	27.9	4,050
Pilot circuit	MPa	psi	3.9	570	3.9	570

Hydraulic motors

Travel: Variable displacement axial piston motor with mechanical brake

Slew: Fixed displacement axial piston motor with mechanical brake

Hydraulic cylinders		ECR145E		ECR235E	
Mono boom		2		2	
Bore x Stroke	ø x mm	105 x 1 055		130 x 1 420	
	ø x in	4.1 x 41.5		5.1 x 55.9	
1st boom of 2 piece boom		2		2	
Bore x Stroke	ø x mm	110 x 980		130 x 1 345	
	ø x in	4.3 x 38.6		5.1 x 53.0	
2nd boom of 2 piece boom		1		1	
Bore x Stroke	ø x mm	160 x 765		160 x 1 070	
	ø x in	6.3 x 30.1		6.3 x 42.1	
Arm		1		1	
Bore x Stroke	ø x mm	120 x 1 028		135 x 1 520	
	ø x in	4.7 x 40.5		5.3 x 59.8	
Bucket		1		1	
Bore x Stroke	ø x mm	100 x 865		120 x 1 065	
	ø x in	3.9 x 34.1		4.7 x 41.9	
Dozer blade		2		2	
Bore x Stroke	ø x mm	130 x 270		140 x 320	
	ø x in	5.1 x 10.6		5.5 x 12.6	

Service refill capacities		ECR145E		ECR235E	
Fuel tank	l gal	200	53	286	76
Hydraulic system, total	l gal	200	53	280	74
Hydraulic tank	l gal	59	16	126	33
DEF tank	l gal	15.5	4	24.9	7
Engine oil	l gal	15.5	4	25	7
Engine coolant	l gal	26	7	30	8
Swing reduction unit	l gal	3.9	1	7	2
Travel reduction unit	l gal	2 x 2.2	2 x 1	2 x 5	2 x 1

Cab

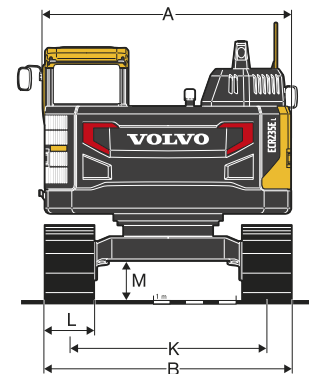
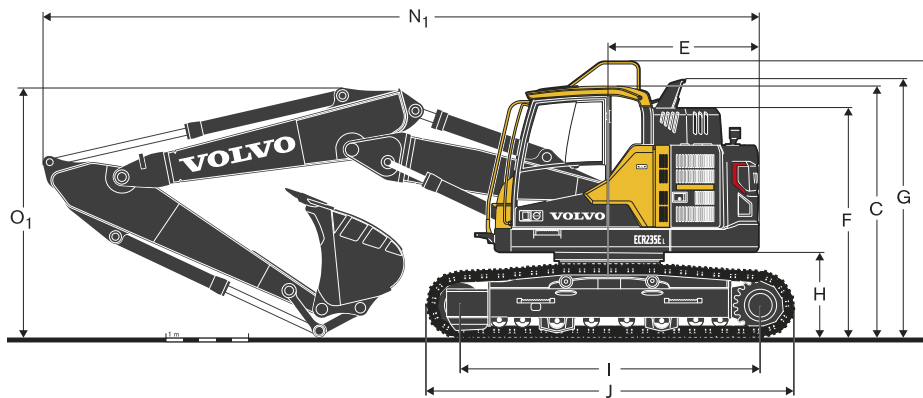
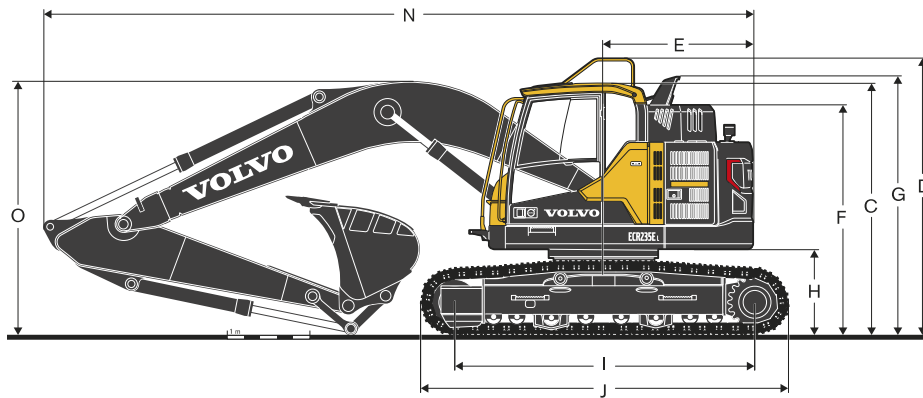
The operator's cab has easy access via a wide door opening. The cab is supported on hydraulic dampening mounts to reduce shock and vibration levels. These along with sound absorbing lining provide low noise levels. The cab has excellent all-round visibility. The front windshield can easily slide up into the ceiling, and the lower front glass can be removed and stored in the side door.

Integrated air-conditioning and heating system: The pressurized and filtered cab air is supplied by an automatically-controlled fan. The air is distributed throughout the cab from 14 vents.

Ergonomic operator's seat: The adjustable seat and joystick console move independently to accommodate the operator. The seat has nine different adjustments plus a seat belt for the operator's comfort and safety.

Sound Level		ECR145E	ECR235E
Sound level in cab according to ISO 6396			
LpA (standard)	dB(A)	71	71
LpA (tropical)	dB(A)	72	72
External sound level according to ISO 6395, EU Noise Directive (2000/14/EC)			
LwA (standard)	dB(A)	100	101
LwA (tropical)	dB(A)	101	102

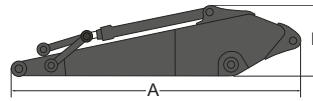
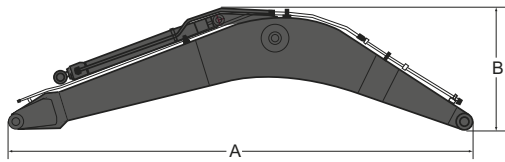
Specifications



Description	Unit	ECR145EL						ECR235EL			
Boom	m, ft in	4.6, 15' 1" mono and 4.72, 15' 6" 2-piece						5.7, 18' 8" mono and 5.5, 18' 3" 2-piece			
Arm	m ft in	2.1	6' 11"	2.5	8' 2"	3.0	9' 10"	2.5	8' 2"	2.9	9' 6"
A Overall width of upper structure	mm ft in	2 490	8' 2"	2 490	8' 2"	2 490	8' 2"	2 990	9' 10"	2 990	9' 10"
B Overall width	mm ft in	2 690	8' 10"	2 690	8' 10"	2 690	8' 10"	3 090	10' 2"	3 090	10' 2"
C Overall height of cab	mm ft in	2 895	9' 6"	2 895	9' 6"	2 895	9' 6"	2 965	9' 9"	2 965	9' 9"
D Overall height of guardrail(unfolded)	mm ft in	3 075	10' 1"	3 075	10' 1"	3 075	10' 1"	3 365	11' 0"	3 365	11' 0"
D' Overall height of guardrail(folded)	mm ft in	-	-	-	-	-	-	2 925	9' 7"	2 925	9' 7"
E Tail swing radius	mm ft in	1 494	4' 11"	1 494	4' 11"	1 494	4' 11"	1 810	5' 11"	1 810	5' 11"
F Overall height of engine hood	mm ft in	2 545	8' 4"	2 545	8' 4"	2 545	8' 4"	2 780	9' 1"	2 780	9' 1"
G Overall height of diffuser	mm ft in	2 775	9' 1"	2 775	9' 1"	2 775	9' 1"	3 035	9' 11"	3 035	9' 11"
H Counterweight clearance *	mm ft in	900	2' 11"	900	2' 11"	900	2' 11"	1 025	3' 4"	1 025	3' 4"
I Tumbler length	mm ft in	3 040	10' 0"	3 040	10' 0"	3 040	10' 0"	3 660	12' 0"	3 660	12' 0"
J Track length	mm ft in	3 750	12' 4"	3 750	12' 4"	3 750	12' 4"	4 460	14' 8"	4 460	14' 8"
K Track gauge	mm ft in	1 990	6' 6"	1 990	6' 6"	1 990	6' 6"	2 390	7' 10"	2 390	7' 10"
L Shoe width	mm ft in	700	2' 4"	700	2' 4"	700	2' 4"	700	2' 4"	700	2' 4"
M Min. ground clearance *	mm ft in	430	1' 5"	430	1' 5"	430	1' 5"	460	1' 6"	460	1' 6"
N Overall length	mm ft in	7 400	24' 3"	7 405	24' 4"	7 345	24' 1"	9 070	29' 9"	9 010	29' 7"
N ₁ Overall length	mm ft in	7 505	24' 7"	7 470	24' 6"	7 370	24' 2"	9 090	29' 10"	9 065	29' 9"
O Overall height of boom	mm ft in	2 760	9' 1"	2 900	9' 6"	3 250	10' 8"	3 330	10' 11"	3 190	10' 6"
O ₁ Overall height of boom	mm ft in	2 710	8' 11"	2 910	9' 7"	3 470	11' 5"	3 060	10' 0"	3 030	9' 11"

* Without shoe grouser.

₁ 2-piece boom



ECR145E

Description	Unit		mono		2-piece	
Boom	m	ft in	4.6	15' 1"	4.72	15' 6"
A Length	mm	ft in	4 770	15' 8"	4 885	16' 0"
B Height	mm	ft in	1 370	4' 6"	1 135	3' 9"
Width	mm	ft in	545	1' 9"	545	1' 9"
Weight	kg	lb	1 130	2,490	1 450	3,200

Description	Unit							
Arm	m	ft in	2.1	6' 11"	2.5	8' 2"	3.0	9' 10"
A Length	mm	ft in	2 790	9' 2"	3 195	10' 6"	3 690	12' 1"
B Height	mm	ft in	680	2' 3"	675	2' 3"	750	2' 6"
Width	mm	ft in	275	0' 11"	275	0' 11"	275	0' 11"
Weight	kg	lb	560	1,230	624	1,380	684	1,510

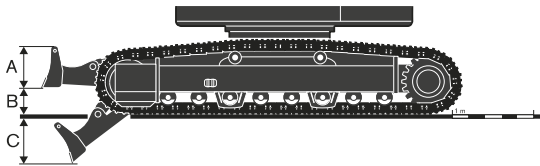
ECR235E

Description	Unit		mono		2-piece	
Boom	m	ft in	5.7	18' 8"	5.57	18' 3"
A Length	mm	ft in	5 910	19' 5"	5 965	19' 7"
B Height	mm	ft in	1 770	5' 10"	1 300	4' 3"
Width	mm	ft in	670	2' 2"	670	2' 2"
Weight	kg	lb	2 000	4,410	2 570	5,670

Description	Unit					
Arm	m	ft in	2.5	8' 2"	2.9	9' 6"
A Length	mm	ft in	3 525	11' 7"	3 910	12' 10"
B Height	mm	ft in	860	2' 10"	860	2' 10"
Width	mm	ft in	440	1' 5"	440	1' 5"
Weight	kg	lb	975	2,150	1 000	2,200

* Includes cylinder, piping and pin, excludes boom cyl. Pin

* Includes cylinder, linkage and pin

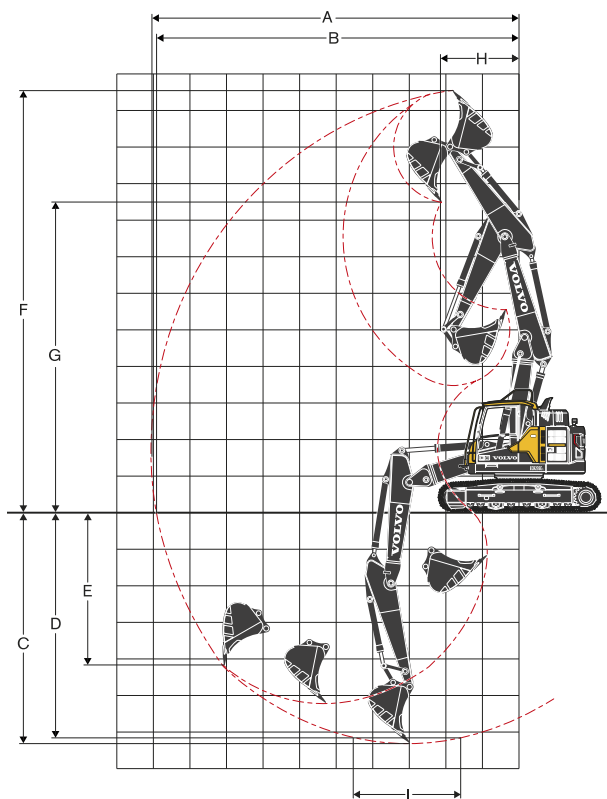
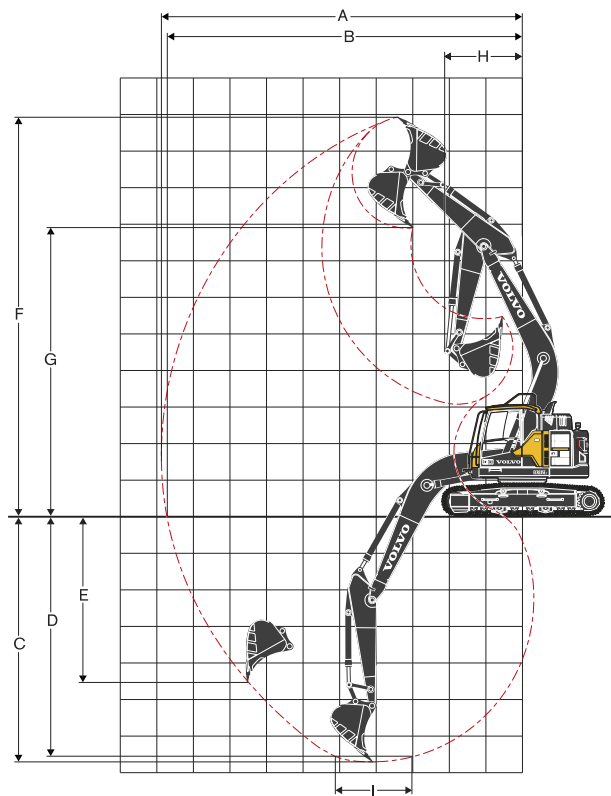


Front dozer blade

Description	Unit		ECR145E		ECR235E	
A Height	mm	ft in	585	1' 11"	600	2' 0"
Width 500 mm / 20" shoe	mm	ft in	2 490	8' 2"	-	-
Width 600 mm / 24" shoe	mm	ft in	2 590	8' 6"	2 990	9' 10"
Width 700 mm / 28" shoe	mm	ft in	2 690	8' 10"	3 090	10' 2"
Width 800 mm / 32" shoe	mm	ft in	-	-	3 190	10' 6"
Weight	kg	lb	460	1,010	790	1,740
B Lift height	mm	ft in	478	1' 7"	610	2' 0"
C Digging depth	mm	ft in	601	2' 0"	480	1' 7"

Specifications

WORKING RANGES



WORKING RANGES

Description		Unit	ECR145E											
Boom		m, ft in	4.6 / 15' 1" mono						4.72 / 15' 6" 2-piece					
Arm		m ft in	2.1	6' 11"	2.5	8' 2"	3.0	9' 10"	2.1	6' 11"	2.5	8' 2"	3.0	9' 10"
A	Max. digging reach	mm ft in	7 990	26' 3"	8 360	27' 5"	8 850	29' 0"	8 220	27' 0"	8 610	28' 3"	9 100	29' 10"
B	Max. digging reach on ground	mm ft in	7 840	25' 9"	8 215	26' 11"	8 720	28' 7"	8 070	26' 6"	8 465	27' 9"	8 970	29' 5"
C	Max. digging depth	mm ft in	5 130	16' 10"	5 530	18' 2"	6 030	19' 9"	5 235	17' 2"	5 640	18' 6"	6 145	20' 2"
D	Max. digging depth (l = 2.44 m level)	mm ft in	4 880	16' 0"	5 310	17' 5"	5 850	19' 2"	5 115	16' 9"	5 525	18' 2"	6 040	19' 10"
E	Max. vertical wall digging depth	mm ft in	3 954	13' 0"	4 325	14' 2"	4 855	15' 11"	4 155	13' 8"	4 523	14' 10"	5 015	16' 5"
F	Max. cutting height	mm ft in	9 090	29' 10"	9 415	30' 11"	9 860	32' 4"	9 380	30' 9"	9 740	31' 11"	10 205	33' 6"
G	Max. dumping height	mm ft in	6 550	21' 6"	6 875	22' 7"	7 310	24' 0"	6 830	22' 5"	7 190	23' 7"	7 660	25' 2"
H	Min. front swing radius	mm ft in	1 929	6' 4"	2 130	7' 0"	2 505	8' 3"	2 330	7' 8"	2 590	8' 6"	3 010	9' 11"

DIGGING FORCES WITH DIRECT FIT BUCKET

Bucket radius		mm ft in	1 274	4' 2"	1 274	4' 2"	1 274	4' 2"	1 274	4' 2"	1 274	4' 2"	1 274	4' 2"
Breakout force - bucket	Normal SAE J1179	kN lb	80.5	18,100	80.5	18,100	80.5	18,100	80.5	18,100	80.5	18,100	80.5	18,100
	Power boost SAE J1179	kN lb	85.4	19,200	85.4	19,200	85.4	19,200	85.4	19,200	85.4	19,200	85.4	19,200
	Normal ISO 6015	kN lb	91.1	20,480	91.1	20,480	91.1	20,480	91.1	20,480	91.1	20,480	91.1	20,480
	Power boost ISO 6015	kN lb	96.6	21,720	96.6	21,720	96.6	21,720	96.6	21,720	96.6	21,720	96.6	21,720
Tearout force - dipper arm	Normal SAE J1179	kN lb	69.5	15,630	62.1	13,950	55.3	12,430	69.5	15,630	62.1	13,950	55.3	12,430
	Power boost SAE J1179	kN lb	73.8	16,580	65.8	14,800	58.6	13,180	73.8	16,580	65.8	14,800	58.6	13,180
	Normal ISO 6015	kN lb	71.4	16,060	63.5	14,280	56.3	12,670	71.4	16,060	63.5	14,280	56.3	12,670
	Power boost ISO 6015	kN lb	75.8	17,030	67.3	15,140	59.8	13,430	75.8	17,030	67.3	15,140	59.8	13,430
Rotation angle, bucket		°	175		175		175		175		175		175	

Description		Unit	ECR235E							
Boom		m, ft in	5.7 / 18' 8" mono				5.57 / 18' 3" 2-piece			
Arm		m ft in	2.5	8' 2"	2.9	9' 6"	2.5	8' 2"	2.9	9' 6"
A	Max. digging reach	mm ft in	9 510	31' 2"	9 890	32' 5"	9 690	31' 9"	10 085	33' 1"
B	Max. digging reach on ground	mm ft in	9 340	30' 8"	9 735	31' 11"	9 660	31' 8"	9 930	32' 7"
C	Max. digging depth	mm ft in	6 350	20' 10"	6 755	22' 2"	5 950	19' 6"	6 355	20' 10"
D	Max. digging depth (l = 2.44 m level)	mm ft in	6 120	20' 1"	6 550	21' 6"	5 840	19' 2"	6 250	20' 6"
E	Max. vertical wall digging depth	mm ft in	5 220	17' 2"	5 685	18' 8"	4 910	16' 1"	5 325	17' 6"
F	Max. cutting height	mm ft in	10 600	34' 9"	10 915	35' 10"	11 150	36' 7"	11 515	37' 9"
G	Max. dumping height	mm ft in	7 560	24' 10"	7 870	25' 10"	8 095	26' 7"	8 460	27' 9"
H	Min. front swing radius	mm ft in	2 395	7' 10"	2 170	7' 1"	2 235	7' 4"	2 160	7' 1"

DIGGING FORCES WITH DIRECT FIT BUCKET

Bucket radius		mm ft in	1 528	5' 0"	1 528	5' 0"	1 528	5' 0"	1 528	5' 0"
Breakout force - bucket	Normal SAE J1179	kN lb	125.0	28,090	125.0	28,100	125.0	28,090	125.0	28,100
	Power boost SAE J1179	kN lb	132.1	29,700	132.2	29,710	132.1	29,700	132.2	29,710
	Normal ISO 6015	kN lb	141.3	31,760	141.3	31,770	141.3	31,760	141.3	31,770
	Power boost ISO 6015	kN lb	149.4	33,580	149.4	33,590	149.4	33,580	149.4	33,590
Tearout force - dipper arm	Normal SAE J1179	kN lb	117.2	26,350	101.3	22,780	117.2	26,350	101.3	22,780
	Power boost SAE J1179	kN lb	123.9	27,860	107.1	24,080	123.9	27,860	107.1	24,080
	Normal ISO 6015	kN lb	120.7	27,130	103.9	23,360	120.7	27,130	103.9	23,360
	Power boost ISO 6015	kN lb	127.6	28,680	109.9	24,700	127.6	28,680	109.9	24,700
Rotation angle, bucket		°	175		175		175		175	

Specifications

MACHINE WEIGHTS AND GROUND PRESSURE

Description	Shoe width		Operating weight		Ground pressure		Overall width		Operating weight		Ground pressure		Overall width	
	mm	in	kg	lb	kPa	psi	mm	in	kg	lb	kPa	psi	mm	in
Triple grouser	ECR145EL													
			4.6 m / 15'1" boom, 2.5 m / 8' 2" arm, 443 kg, 660 l / 980 lb bucket, 3 200 kg / 7,060 counterweight						4.72 m / 15' 6" 2-piece boom, 2.5 m / 8' 2" arm, 443 kg, 660 l / 980 lb bucket, 3 200 kg / 7,060 lb counterweight					
	500	20	14 920	32,900	44.1	6.4	2 490	8' 2"	15 310	33,760	45.1	6.5	2 490	8' 2"
	600	24	15 120	33,330	37.3	5.4	2 590	8' 6"	15 510	34,190	38.2	5.5	2 590	8' 6"
Triple grouser, HD	750	30	15 500	34,180	30.4	4.4	2 740	9' 0"	15 890	35,040	31.4	4.6	2 740	9' 0"
	600	20	15 185	33,480	37.3	5.4	2 590	8' 6"	15 570	34,340	38.2	5.5	2 590	8' 6"
Rubber grouser	700	28	15 400	33,950	32.4	4.7	2 690	8' 10"	15 785	34,810	33.3	4.8	2 690	8' 10"
Add on rubber grouser	500	20	14 955	32,980	44.1	6.4	2 490	8' 2"	15 340	33,830	46.1	6.7	2 490	8' 2"

Triple grouser	ECR145EL with dozer blade													
			4.6 m / 15'1" boom, 2.5 m / 8' 2" arm, 443 kg, 660 l / 980 lb bucket, 3 200 kg / 7,060 counterweight						4.72 m / 15' 6" 2-piece boom, 2.5 m / 8' 2" arm, 443 kg, 660 l / 980 lb bucket, 3 200 kg / 7,060 lb counterweight					
	500	20	15 790	34,820	47.1	6.8	2 490	8' 2"	16 180	35,680	48.0	7.0	2 490	8' 2"
	600	24	16 000	35,280	39.2	5.7	2 590	8' 6"	16 390	36,130	40.2	5.8	2 590	8' 6"
Triple grouser, HD	750	30	16 385	36,130	32.4	4.7	2 740	9' 0"	16 770	36,990	33.3	4.8	2 740	9' 0"
	600	20	16 070	35,430	40.2	5.8	2 590	8' 6"	16 455	36,280	41.2	6.0	2 590	8' 6"
Rubber grouser	700	28	16 280	35,900	34.3	5.0	2 690	8' 10"	16 670	36,760	35.3	5.1	2 690	8' 10"
Add on rubber grouser	500	20	15 830	34,900	47.1	6.8	2 490	8' 2"	16 220	35,760	48.0	7.0	2 490	8' 2"

Triple grouser	ECR235EL													
			5.7 m / 18' 8" boom, 2.9 m / 9' 6" arm, 908 kg, 1 090 l / 2,000 lb bucket, 6 200 kg / 13,670 lb counterweight						5.57 m / 18' 3" 2-piece boom, 2.9 m / 9' 6" arm, 908 kg, 1 090 l / 2,000 lb bucket, 6 200 kg / 13,670 lb counterweight					
	600	24	24 570	54,180	51.0	7.4	2 990	9' 10"	25 140	55,430	52.0	7.5	2 990	9' 10"
	700	28	25 040	55,210	44.1	6.4	3 090	10' 2"	25 600	56,460	45.1	6.5	3 090	10' 2"
Triple grouser, HD	800	32	25 315	55,820	39.2	5.7	3 190	10' 6"	25 880	57,070	40.2	5.8	3 190	10' 6"
	900	36	25 610	56,470	35.3	5.1	3 290	10' 10"	26 180	57,720	36.3	5.3	3 290	10' 10"
Double grouser	600	24	25 780	56,840	53.0	7.7	2 990	9' 10"	25 310	55,800	52.0	7.5	2 990	9' 10"
Rubber grouser	700	28	25 300	55,780	45.1	6.5	3 090	10' 2"	25 860	57,030	46.1	6.7	3 090	10' 2"
Add on rubber grouser	600	24	24 700	54,460	51.0	7.4	2 990	9' 10"	25 430	56,080	53.0	7.7	2 990	9' 10"

Triple grouser	ECR235EL with dozer blade													
			5.7 m / 18' 8" boom, 2.9 m / 9' 6" arm, 908 kg, 1 090 l / 2,000 lb bucket, 6 200 kg / 13,670 lb counterweight						5.57 m / 18' 3" 2-piece boom, 2.9 m / 9' 6" arm, 908 kg, 1 090 l / 2,000 lb bucket, 6 200 kg / 13,670 lb counterweight					
	600	24	25 955	57,230	53.9	7.8	2 990	9' 10"	26 520	58,480	54.9	8.0	2 990	9' 10"
	700	28	26 440	58,290	47.1	6.8	3 090	10' 2"	27 000	59,540	48.0	7.0	3 090	10' 2"
Triple grouser, HD	800	32	26 730	58,930	41.2	6.0	3 190	10' 6"	27 290	60,180	42.2	6.1	3 190	10' 6"
	900	36	27 020	59,580	37.3	5.4	3 290	10' 10"	27 590	60,830	38.2	5.5	3 290	10' 10"
Double grouser	600	24	27 160	59,890	55.9	8.1	2 990	9' 10"	26 690	58,850	54.9	8.0	2 990	9' 10"
Rubber grouser	700	28	26 695	58,860	47.1	6.8	3 090	10' 2"	27 260	60,110	48.0	7.0	3 090	10' 2"
Add on rubber grouser	600	24	26 080	57,510	53.9	7.8	2 990	9' 10"	26 820	59,130	55.9	8.1	2 990	9' 10"

BUCKET SELECTION GUIDE

Bucket type		Capacity		Cutting width		Weight		Teeth	ECR145E							
									600 mm / 24' shoe, 3 200 kg / 7,060 lb counterweight							
									4.6 m / 15' 1" boom			4.72 m / 15' 6" 2-piece boom				
		m³	yd³	mm	in	kg	lb	EA	2.1 m / 6' 11" arm	2.5 m / 8' 2" arm	3.0 m / 9' 10" arm	2.1 m / 6' 11" arm	2.5 m / 8' 2" arm	3.0 m / 9' 10" arm		
Direct fit Buckets	General purpose	0.25	0.33	450	17.72	330	729	3	C	C	C	C	C	C	C	
		0.33	0.43	600	23.62	361	797	3	C	C	C	C	C	C	C	
		0.42	0.55	750	29.53	392	864	3	C	C	C	C	C	C	C	
		0.54	0.71	900	35.43	440	971	4	C	C	C	C	C	C	C	
		0.66	0.86	1 050	41.34	480	1,059	4	C	C	C	C	C	C	C	
	Heavy duty	0.77	1.01	1 200	47.24	541	1,193	5	C	C	B	C	C	B	B	
		0.25	0.33	450	17.72	320	705	3	D	D	D	D	D	D	D	
		0.33	0.43	600	23.62	352	777	3	D	D	D	D	D	D	D	
		0.42	0.55	750	29.53	384	848	3	D	D	D	D	D	D	D	
		0.54	0.71	900	35.43	445	981	4	D	D	D	D	D	D	D	
Bucket type		Capacity		Cutting width		Weight		Teeth	ECR145E							
									700 mm / 28' shoe, 3 200 kg / 7,060 lb counterweight							
									4.6 m / 15' 1" boom			4.72 m / 15' 6" 2-piece boom				
		m³	yd³	mm	in	kg	lb	EA	2.1 m / 6' 11" arm	2.5 m / 8' 2" arm	3.0 m / 9' 10" arm	2.1 m / 6' 11" arm	2.5 m / 8' 2" arm	3.0 m / 9' 10" arm		
Direct fit Buckets	General purpose	0.25	0.33	450	17.72	330	729	3	C	C	C	C	C	C	C	
		0.33	0.43	600	23.62	361	797	3	C	C	C	C	C	C	C	
		0.42	0.55	750	29.53	392	864	3	C	C	C	C	C	C	C	
		0.54	0.71	900	35.43	440	971	4	C	C	C	C	C	C	C	
		0.66	0.86	1 050	41.34	480	1,059	4	C	C	C	C	C	C	C	
	Heavy duty	0.77	1.01	1 200	47.24	541	1,193	5	C	C	B	C	C	B	B	
		0.25	0.33	450	17.72	320	705	3	D	D	D	D	D	D	D	
		0.33	0.43	600	23.62	352	777	3	D	D	D	D	D	D	D	
		0.42	0.55	750	29.53	384	848	3	D	D	D	D	D	D	D	
		0.54	0.71	900	35.43	445	981	4	D	D	D	D	D	D	D	
Bucket type		Capacity		Cutting width		Weight		Teeth	ECR235E							
									600 mm / 24' shoe, 6 200 kg / 13,670 lb counterweight				700 mm / 28' shoe, 6 200 kg / 13,670 lb counterweight			
									5.7 m / 18' 8" boom		5.57 m / 18' 3" 2-piece boom		5.7 m / 18' 8" boom		5.57 m / 18' 3" 2-piece boom	
		m³	yd³	mm	in	kg	lb	EA	2.5 m / 8' 2" arm	2.9 m / 9' 6" arm	2.5 m / 8' 2" arm	2.9 m / 9' 6" arm	2.5 m / 8' 2" arm	2.9 m / 9' 6" arm	2.5 m / 8' 2" arm	2.9 m / 9' 6" arm
Direct fit Buckets	General purpose	0.48	0.63	600	23.62	666	1,468	3	C	C	C	C	C	C	C	C
		0.59	0.77	750	29.53	711	1,568	3	C	C	C	C	C	C	C	C
		0.75	0.98	900	35.43	792	1,746	4	C	C	C	C	C	C	C	C
		0.92	1.20	1 050	41.34	862	1,900	4	C	C	C	C	C	C	C	C
		1.09	1.43	1 200	47.24	951	2,096	5	C	C	C	C	C	C	C	C
	Heavy duty	1.27	1.66	1 350	53.15	1 038	2,289	5	C	C	C	B	C	C	C	C
		0.48	0.63	600	23.62	738	1,628	3	C	B	B	B	C	B	B	B
		0.48	0.63	600	23.62	675	1,488	3	C	C	C	C	C	C	C	C
		0.75	0.98	900	35.43	872	1,922	4	C	C	C	C	C	C	C	C
		0.75	0.98	900	35.43	808	1,783	4	C	C	C	C	C	C	C	C
		0.92	1.20	1 050	41.34	951	2,098	4	C	C	C	C	C	C	C	C
		0.92	1.20	1 050	41.34	888	1,959	4	C	C	C	C	C	C	C	C
		1.09	1.43	1 200	47.24	1 046	2,307	5	C	B	B	B	C	B	B	B
		1.09	1.43	1 200	47.24	983	2,168	5	B	A	A	A	B	A	B	A

Maximum material density

	kg/m ³	lb/yd ³	
A	1 200 - 1 300	2,000 - 2,200	Coal, Caliche, Shale
B	1 400 - 1 600	2,300 - 2,700	Wet earth and clay, Limestone, Sandstone
C	1 700 - 1 800	2,800 - 3,100	Granite, Wet sand, Well blasted rock
D	> 1 900	> 3,200	Wet mud, Iron ore

Please consult with your Volvo dealer for the proper match of buckets and attachments to suit the application.

The recommendations are given as a guide only, based on typical operation conditions.

Bucket capacity based on ISO 7451, heaped material with a 1:1 angle of repose.

Specifications

LIFTING CAPACITY ECR145EL

Lifting capacity at the arm end without bucket.

For lifting capacity including bucket, simply subtract actual weight of the direct fit bucket or the bucket with quick coupler from the following values.

	Lifting hook related to ground level	1.5 m, 5 ft		3.0 m, 10 ft		4.5 m, 15 ft		6.0 m, 20 ft		7.5 m, 25 ft		Max. Reach			
		Along UC	Across UC	Along UC	Across UC	Along UC	Across UC	Along UC	Across UC	Along UC	Across UC	Along UC	Across UC		
Boom: 4.6 m, 15' 1" Arm: 2.1 m, 6' 11" Shoe: 600 mm, 24" CWT: 3 200 kg, 7,060 lb	7.5 m	kg	-	-	-	-	-	-	-	-	-	*5 360	*5 360	2.8 m	
	25 ft	lb	-	-	-	-	-	-	-	-	-	*12,520	*12,520	8.4 ft	
	6 m	kg	-	-	*4 360	*4 360	*4 190	3 870	-	-	-	*4 220	3 280	5.0 m	
	20 ft	lb	-	-	*9,600	*9,600	*9,300	8,300	-	-	-	*9,380	7,460	16.0 ft	
	4.5 m	kg	-	-	*5 220	*5 220	*4 360	3 810	3 840	2 410	-	-	3 830	2 400	6.0 m
	15 ft	lb	-	-	*11,270	*11,270	*9,500	8,210	-	-	-	-	8,530	5,350	19.6 ft
	3 m	kg	-	-	*7 560	6 690	*5 090	3 620	3 790	2 360	-	-	3 300	2 060	6.6 m
	10 ft	lb	-	-	*16,180	14,450	*11,030	7,820	8,160	5,090	-	-	7,300	4,550	21.5 ft
	1.5 m	kg	-	-	-	-	5 720	3 420	3 700	2 280	-	-	3 130	1 940	6.7 m
	5 ft	lb	-	-	-	-	12,320	7,380	7,980	4,920	-	-	6,910	4,270	22.0 ft
	0 m	kg	-	-	*5 520	*5 520	5 580	3 290	3 630	2 220	-	-	3 230	1 980	6.5 m
	0 ft	lb	-	-	*12,930	12,810	12,000	7,100	7,840	4,790	-	-	7,120	4,380	21.4 ft
	-1.5 m	kg	*5 200	*5 200	*8 140	5 980	5 540	3 260	-	-	-	-	3 680	2 240	5.9 m
	-5 ft	lb	*11,730	*11,730	*17,690	12,860	11,920	7,030	-	-	-	-	8,140	4,970	19.5 ft
	-3.0 m	kg	-	-	*6 040	*6 040	*4 140	3 330	-	-	-	-	*3 610	3 030	4.8 m
	-10 ft	lb	-	-	*12,980	*12,980	*8,710	7,210	-	-	-	-	*7,930	6,780	15.7 ft
Boom: 4.6 m, 15' 1" Arm: 2.5 m, 8' 2" Shoe: 600 mm, 24" CWT: 3 200 kg, 7,060 lb	7.5 m	kg	-	-	*4 380	*4 380	-	-	-	-	-	*4 270	*4 270	3.7 m	
	25 ft	lb	-	-	*9,980	*9,980	-	-	-	-	-	*9,730	*9,730	11.3 ft	
	6 m	kg	-	-	-	-	*3 750	*3 750	-	-	-	*3 440	2 850	5.5 m	
	20 ft	lb	-	-	-	-	*8,310	*8,310	-	-	-	*7,650	6,430	17.6 ft	
	4.5 m	kg	-	-	*4 420	*4 420	*4 000	3 850	*3 710	2 430	-	-	*3 220	2 170	6.4 m
	15 ft	lb	-	-	*9,730	*9,730	*8,730	8,290	*8,170	5,230	-	-	*7,120	4,830	21.0 ft
	3 m	kg	-	-	*6 780	*6 780	*4 770	3 650	3 800	2 370	-	-	3 030	1 880	6.9 m
	10 ft	lb	-	-	*14,530	*14,530	*10,340	7,890	8,180	5,100	-	-	6,700	4,160	22.7 ft
	1.5 m	kg	-	-	-	-	*5 630	3 430	3 700	2 270	-	-	2 880	1 780	7.1 m
	5 ft	lb	-	-	-	-	*12,200	7,400	7,960	4,900	-	-	6,360	3,920	23.2 ft
	0 m	kg	-	-	*6 130	5 920	5 560	3 270	3 610	2 200	-	-	2 950	1 810	6.9 m
	0 ft	lb	-	-	*14,260	12,740	11,970	7,060	7,790	4,740	-	-	6,520	3,990	22.6 ft
	-1.5 m	kg	*4 770	*4 770	*8 600	5 900	5 500	3 210	3 580	2 170	-	-	3 310	2 010	6.4 m
	-5 ft	lb	*10,730	*10,730	*18,660	12,690	11,830	6,930	7,730	4,690	-	-	7,310	4,460	20.8 ft
	-3.0 m	kg	*9 220	*9 220	*6 790	6 000	*4 680	3 260	-	-	-	-	*3 560	2 590	5.3 m
	-10 ft	lb	*20,870	*20,870	*14,620	12,910	*10,000	7,040	-	-	-	-	*7,840	5,780	17.4 ft
Boom: 4.6 m, 15' 1" Arm: 3.0 m, 9' 10" Shoe: 600 mm, 24" CWT: 3 200 kg, 7,060 lb	7.5 m	kg	-	-	-	-	*3 460	*3 460	-	-	-	-	*3 360	*3 360	4.6 m
	25 ft	lb	-	-	-	-	-	-	-	-	-	-	*7,580	*7,580	14.4 ft
	6 m	kg	-	-	-	-	*3 220	*3 220	*3 030	2 440	-	-	*2 830	2 380	6.1 m
	20 ft	lb	-	-	-	-	*7,130	*7,130	-	-	-	-	*6,290	5,360	19.7 ft
	4.5 m	kg	-	-	-	-	*3 510	*3 510	*3 350	2 440	-	-	*2 670	1 880	7.0 m
	15 ft	lb	-	-	-	-	*7,660	*7,660	*7,360	5,250	-	-	*5,900	4,190	22.7 ft
	3 m	kg	-	-	*5 740	*5 740	*4 300	3 680	*3 650	2 350	-	-	*2 670	1 650	7.4 m
	10 ft	lb	-	-	*12,100	*12,100	*9,340	7,940	*7,960	5,070	-	-	*5,890	3,660	24.3 ft
	1.5 m	kg	-	-	-	-	*5 260	3 420	3 670	2 240	2 610	1 590	2 570	1 560	7.6 m
	5 ft	lb	-	-	-	-	*11,400	7,380	7,900	4,830	-	-	5,670	3,450	24.8 ft
	0 m	kg	-	-	*6 540	5 850	5 510	3 220	3 560	2 140	-	-	2 620	1 580	7.4 m
	0 ft	lb	-	-	*15,210	12,580	11,860	6,940	7,670	4,620	-	-	5,780	3,490	24.3 ft
	-1.5 m	kg	*4 120	*4 120	*8 920	5 750	5 410	3 130	3 510	2 090	-	-	2 880	1 730	6.9 m
	-5 ft	lb	*9,260	*9,260	*19,370	12,370	11,630	6,740	7,560	4,520	-	-	6,370	3,830	22.6 ft
	-3.0 m	kg	*7 550	*7 550	*7 500	5 820	*5 090	3 140	-	-	-	-	*3 340	2 130	6.0 m
	-10 ft	lb	*17,050	*17,050	*16,170	12,510	*10,950	6,770	-	-	-	-	*7,350	4,750	19.5 ft
Boom: 4.6 m, 15' 1" Arm: 2.1 m, 6' 11" Shoe: 600 mm, 24" CWT: 3 200 kg, 7,060 lb Dozer blade down	7.5 m	kg	-	-	-	-	-	-	-	-	-	*5 360	*5 360	2.8 m	
	25 ft	lb	-	-	-	-	-	-	-	-	-	-	*12,520	*12,520	8.4 ft
	6 m	kg	-	-	*4 360	*4 360	*4 190	*4 190	-	-	-	-	*4 220	3 720	5.0 m
	20 ft	lb	-	-	*9,600	*9,600	*9,300	*9,300	-	-	-	-	*9,380	8,450	16.0 ft
	4.5 m	kg	-	-	*5 220	*5 220	*4 360	4 310	*3 980	2 740	-	-	*3 910	2 730	6.0 m
	15 ft	lb	-	-	*11,270	*11,270	*9,500	9,300	-	-	-	-	*8,630	6,090	19.6 ft
	3 m	kg	-	-	*7 560	*7 560	*5 090	4 130	*4 150	2 690	-	-	*3 930	2 350	6.6 m
	10 ft	lb	-	-	*16,180	*16,180	*11,030	8,900	*9,060	5,810	-	-	*8,650	5,200	21.5 ft
	1.5 m	kg	-	-	-	-	*5 850	3 910	*4 410	2 610	-	-	*3 960	2 220	6.7 m
	5 ft	lb	-	-	-	-	*12,670	8,450	*9,570	5,630	-	-	*8,740	4,900	22.0 ft
	0 m	kg	-	-	*5 520	*5 520	*6 120	3 780	*4 450	2 550	-	-	*3 980	2 280	6.5 m
	0 ft	lb	-	-	*12,930	*12,930	*13,260	8,160	*9,620	5,510	-	-	*8,770	5,030	21.4 ft
	-1.5 m	kg	*5 200	*5 200	*8 140	6 970	*5 670	3 750	-	-	-	-	*3 930	2 580	5.9 m
	-5 ft	lb	*11,730	*11,730	*17,690	14,960	*12,280	8,100	-	-	-	-	*8,660	5,700	19.5 ft
	-3.0 m	kg	-	-	*6 040	*6 040	*4 140	3 830	-	-	-	-	*3 610	3 470	4.8 m
	-10 ft	lb	-	-	*12,980	*12,980	*8,710	8,280	-	-	-	-	*7,930	7,780	15.7 ft

Notes: 1. Machine in "Fine Mode-F" (Power Boost) for lifting capacities. 2. The above loads are in compliance with SAE J1097 and ISO 10567 Hydraulic Excavator Lifting Capacity Standards.

3. Rated loads do not exceed 87% of hydraulic lifting capacity or 75% of tipping load. 4. Rated loads marked with an asterisk (*) are limited by hydraulic capacity rather than tipping load.

LIFTING CAPACITY ECR145EL

Lifting capacity at the arm end without bucket.

For lifting capacity including bucket, simply subtract actual weight of the direct fit bucket or the bucket with quick coupler from the following values.

	Lifting hook related to ground level		1.5 m, 5 ft		3.0 m, 10 ft		4.5 m, 15 ft		6.0 m, 20 ft		7.5 m, 25 ft		Max. Reach	
			Along UC	Across UC	Along UC	Across UC	Along UC	Across UC	Along UC	Across UC	Along UC	Across UC	Along UC	Across UC
Boom: 4.6 m, 15' 1" Arm: 2.5 m, 8' 2" Shoe: 600 mm, 24" CWT: 3 200 kg, 7,060 lb Dozer blade down	7.5 m	kg	-	-	*4 380	*4 380	-	-	-	-	-	-	*4 270	*4 270
	25 ft	lb	-	-	*9,980	*9,980	-	-	-	-	-	-	*9,730	*9,730
	6 m	kg	-	-	-	-	*3 750	*3 750	-	-	-	-	*3 440	*3 230
	20 ft	lb	-	-	-	-	*8,310	*8,310	-	-	-	-	*7,650	*7,290
	4.5 m	kg	-	-	*4 420	*4 420	*4 000	*4 000	*3 710	2 770	-	-	*3 220	*2 470
	15 ft	lb	-	-	*9,730	*9,730	*8,730	*8,730	*8,170	5,950	-	-	*7,120	5,500
	3 m	kg	-	-	*6 780	*6 780	*4 770	4 160	*3 950	2 700	-	-	*3 240	2 150
	10 ft	lb	-	-	*14,530	*14,530	*10,340	8,970	*8,620	5,820	-	-	*7,130	4,770
	1.5 m	kg	-	-	-	-	*5 630	3 930	*4 280	2 600	-	-	*3 440	2 040
	5 ft	lb	-	-	-	-	*12,200	8,470	*9,290	5,620	-	-	*7,570	4,510
	0 m	kg	-	-	*6 130	*6 130	*6 060	3 770	*4 430	2 530	-	-	*3 730	2 080
	0 ft	lb	-	-	*14,260	*14,260	*13,140	8,120	*9,600	5,450	-	-	*8,230	4,600
	-1.5 m	kg	*4 770	*4 770	*8 600	6 880	*5 820	3 710	*4 130	2 500	-	-	*3 730	2 320
	-5 ft	lb	*10,730	*10,730	*18,660	14,790	*12,600	8,000	*8,860	5,400	-	-	*8,220	5,130
	-3.0 m	kg	*9 220	*9 220	*6 790	*6 790	*4 680	3 750	-	-	-	-	*3 560	2 980
	-10 ft	lb	*20,870	*20,870	*14,620	*14,620	*10,000	8,100	-	-	-	-	*7,840	6,640
Boom: 4.6 m, 15' 1" Arm: 3.0 m, 9' 10" Shoe: 600 mm, 24" CWT: 3 200 kg, 7,060 lb Dozer blade down	7.5 m	kg	-	-	-	-	*3 460	*3 460	-	-	-	-	*3 360	*3 360
	25 ft	lb	-	-	-	-	-	-	-	-	-	-	*7,580	*7,580
	6 m	kg	-	-	-	-	*3 220	*3 220	*3 030	2 780	-	-	*2 830	2 710
	20 ft	lb	-	-	-	-	*7,130	*7,130	-	-	-	-	*6,290	6,100
	4.5 m	kg	-	-	-	-	*3 510	*3 510	*3 350	2 770	-	-	*2 670	2 150
	15 ft	lb	-	-	-	-	*7,660	*7,660	*7,360	5,970	-	-	*5,900	4,790
	3 m	kg	-	-	*5 740	*5 740	*4 300	4 180	*3 650	2 690	-	-	*2 670	1 900
	10 ft	lb	-	-	*12,100	*12,100	*9,340	9,030	*7,960	5,790	-	-	*5,890	4,210
	1.5 m	kg	-	-	-	-	*5 260	3 920	*4 050	2 570	*3 120	1 830	*2 810	1 800
	5 ft	lb	-	-	-	-	*11,400	8,460	*8,800	5,540	-	-	*6,180	3,990
	0 m	kg	-	-	*6 540	*6 540	*5 880	3 710	*4 320	2 470	-	-	*3 110	1 830
	0 ft	lb	-	-	*15,210	14,680	*12,750	8,010	*9,360	5,330	-	-	*6,860	4,040
	-1.5 m	kg	*4 120	*4 120	*8 920	6 730	*5 880	3 620	*4 220	2 420	-	-	*3 410	2 010
	-5 ft	lb	*9,260	*9,260	*19,370	14,460	*12,730	7,810	*9,120	5,230	-	-	*7,530	4,440
	-3.0 m	kg	*7 550	*7 550	*7 500	6 800	*5 090	3 630	-	-	-	-	*3 340	2 470
	-10 ft	lb	*17,050	*17,050	*16,170	14,610	*10,950	7,840	-	-	-	-	*7,350	5,490
Boom: 4.72 m, 15' 6" 2-piece Arm: 2.1 m, 6' 11" Shoe: 600 mm, 24" CWT: 3 200 kg, 7,060 lb	-4.5 m	kg	-	-	*4 580	*4 580	-	-	-	-	-	-	*2 830	*2 830
	-15 ft	lb	-	-	*9,520	*9,520	-	-	-	-	-	-	*6,130	*6,130
	7.5 m	kg	-	-	*6 240	*6 240	-	-	-	-	-	-	*5 300	*5 300
	25 ft	lb	-	-	*12,970	*12,970	-	-	-	-	-	-	*12,260	*12,260
	6 m	kg	-	-	*5 290	*5 290	*5 480	3 890	-	-	-	-	*3 950	2 970
	20 ft	lb	-	-	*11,850	*11,850	*12,040	8,370	-	-	-	-	*8,810	6,730
	4.5 m	kg	-	-	*5 480	*5 480	*5 690	3 820	3 880	2 410	-	-	*3 580	2 230
	15 ft	lb	-	-	*11,950	*11,950	*12,370	8,230	8,330	5,180	-	-	*7,910	4,980
	3 m	kg	-	-	-	-	5 990	3 610	3 810	2 350	-	-	3 140	1 930
	10 ft	lb	-	-	-	-	12,900	7,800	8,210	5,080	-	-	6,940	4,280
	1.5 m	kg	-	-	-	-	5 740	3 390	3 710	2 270	-	-	2 990	1 830
	5 ft	lb	-	-	-	-	12,350	7,320	8,010	4,890	-	-	6,600	4,040
	0 m	kg	-	-	-	-	5 590	3 260	3 640	2 200	-	-	3 080	1 880
	0 ft	lb	-	-	-	-	12,030	7,040	7,860	4,760	-	-	6,800	4,140
	-1.5 m	kg	-	-	*6 990	5 960	*5 410	3 240	*3 600	2 200	-	-	*3 190	2 120
	-5 ft	lb	-	-	*15,260	12,820	*11,710	6,980	*7,490	4,770	-	-	*7,010	4,680
Boom: 4.72 m, 15' 6" 2-piece Arm: 2.5 m, 8' 2" Shoe: 600 mm, 24" CWT: 3 200 kg, 7,060 lb	7.5 m	kg	-	-	*5 310	*5 310	-	-	-	-	-	-	*4 030	*4 030
	25 ft	lb	-	-	*11,820	*11,820	-	-	-	-	-	-	*9,180	*9,180
	6 m	kg	-	-	-	-	*4 690	3 950	-	-	-	-	*3 210	2 590
	20 ft	lb	-	-	-	-	*10,350	8,500	-	-	-	-	*7,140	5,840
	4.5 m	kg	-	-	*4 100	*4 100	*4 890	3 860	3 910	2 440	-	-	*2 940	2 010
	15 ft	lb	-	-	*9,040	*9,040	*10,740	8,320	8,400	5,240	-	-	*6,500	4,480
	3 m	kg	-	-	-	-	6 040	3 650	3 820	2 360	-	-	2 870	1 760
	10 ft	lb	-	-	-	-	13,000	7,870	8,230	5,090	-	-	*6,350	3,910
	1.5 m	kg	-	-	-	-	5 760	3 400	3 710	2 260	-	-	2 750	1 670
	5 ft	lb	-	-	-	-	12,390	7,340	7,990	4,870	-	-	6,070	3,700
	0 m	kg	-	-	-	-	5 570	3 240	3 620	2 180	-	-	2 820	1 710
	0 ft	lb	-	-	-	-	11,990	6,990	7,810	4,700	-	-	6,220	3,770
	-1.5 m	kg	-	-	*7 870	5 870	5 510	3 190	3 590	2 150	-	-	*3 110	1 900
	-5 ft	lb	-	-	*17,120	12,620	11,860	6,880	7,760	4,660	-	-	*6,840	4,200
	-3.0 m	kg	-	-	-	-	*3 840	3 240	-	-	-	-	-	-
	-10 ft	lb	-	-	-	-	*8,120	7,000	-	-	-	-	-	18.5 ft

Notes: 1. Machine in "Fine Mode-F" (Power Boost) for lifting capacities. 2. The above loads are in compliance with SAE J1097 and ISO 10567 Hydraulic Excavator Lifting Capacity Standards.

3. Rated loads do not exceed 87% of hydraulic lifting capacity or 75% of tipping load. 4. Rated loads marked with an asterisk (*) are limited by hydraulic capacity rather than tipping load.

Specifications

LIFTING CAPACITY ECR145EL

Lifting capacity at the arm end without bucket.

For lifting capacity including bucket, simply subtract actual weight of the direct fit bucket or the bucket with quick coupler from the following values.

	Lifting hook related to ground level	1.5 m, 5 ft		3.0 m, 10 ft		4.5 m, 15 ft		6.0 m, 20 ft		7.5 m, 25 ft		Max. Reach		
		Along UC	Across UC	Along UC	Across UC	Along UC	Across UC	Along UC	Across UC	Along UC	Across UC	Along UC	Across UC	
Boom: 4.72 m, 15' 6" 2-piece Arm: 3.0 m, 9' 10" Shoe: 600 mm, 24" CWT: 3 200 kg, 7,060 lb	7.5 m kg	-	-	-	-	*3 980	3 940	-	-	-	-	*3 180	*3 180	5.0 m
	25 ft lb	-	-	-	-	*8,390	8,390	-	-	-	-	*7,180	*7,180	15.8 ft
	6 m kg	-	-	-	-	*3 770	*3 770	*3 530	2 460	-	-	*2 640	2 170	6.4 m
	20 ft lb	-	-	-	-	*8,400	*8,400	*7,300	5,260	-	-	*5,870	4,890	20.8 ft
	4.5 m kg	-	-	-	-	*3 730	*3 730	3 920	2 440	-	-	*2 440	1 750	7.2 m
	15 ft lb	-	-	-	-	*8,260	*8,260	8,440	5,260	-	-	*5,390	3,890	23.6 ft
	3 m kg	-	-	-	-	*5 060	3 670	3 820	2 350	2 670	1 620	*2 390	1 550	7.7 m
	10 ft lb	-	-	-	-	*10,950	7,930	8,220	5,060	5,730	3,470	*5,270	3,420	25.2 ft
	1.5 m kg	-	-	-	-	5 760	3 390	3 680	2 230	2 620	1 580	2 450	1 470	7.8 m
	5 ft lb	-	-	-	-	12,400	7,330	7,930	4,800	5,640	3,390	5,410	3,250	25.7 ft
	0 m kg	-	-	-	-	5 520	3 190	3 570	2 120	2 580	1 540	2 500	1 490	7.7 m
	0 ft lb	-	-	-	-	11,880	6,870	7,690	4,580	5,560	3,320	5,520	3,300	25.1 ft
	-1.5 m kg	-	-	*7 460	5 710	5 420	3 100	3 520	2 070	-	-	2 740	1 630	7.2 m
	-5 ft lb	-	-	*17,150	12,270	11,660	6,680	7,580	4,480	-	-	6,060	3,620	23.5 ft
	-3.0 m kg	-	-	*6 170	5 800	*4 530	3 120	*2 830	2 110	-	-	*2 260	1 990	6.3 m
	-10 ft lb	-	-	*13,260	12,460	*9,670	6,730	*5,710	4,570	-	-	*4,920	4,430	20.6 ft
Boom: 4.72 m, 15' 6" 2-piece Arm: 2.1 m, 6' 11" Shoe: 600 mm, 24" CWT: 3 200 kg, 7,060 lb Dozer blade down	7.5 m kg	-	-	*6 240	*6 240	-	-	-	-	-	-	*5 300	*5 300	3.4 m
	25 ft lb	-	-	*12,970	*12,970	-	-	-	-	-	-	*12,260	*12,260	10.3 ft
	6 m kg	-	-	*5 290	*5 290	*5 480	4 410	-	-	-	-	*3 950	3 380	5.3 m
	20 ft lb	-	-	*11,850	*11,850	*12,040	9,470	-	-	-	-	*8,810	7,640	17.0 ft
	4.5 m kg	-	-	*5 480	*5 480	*5 690	4 330	*4 790	2 750	-	-	*3 580	2 550	6.3 m
	15 ft lb	-	-	*11,950	*11,950	*12,370	9,330	*9,840	5,910	-	-	*7,910	5,680	20.5 ft
	3 m kg	-	-	-	-	*6 320	4 120	*4 900	2 690	-	-	*3 500	2 220	6.8 m
	10 ft lb	-	-	-	-	*13,700	8,890	*10,640	5,800	-	-	*7,710	4,910	22.2 ft
	1.5 m kg	-	-	-	-	*6 780	3 890	*4 970	2 600	-	-	*3 630	2 110	6.9 m
	5 ft lb	-	-	-	-	*14,700	8,400	*10,780	5,610	-	-	*7,980	4,650	22.8 ft
	0 m kg	-	-	-	-	*6 530	3 760	*4 690	2 540	-	-	*3 750	2 160	6.8 m
	0 ft lb	-	-	-	-	*14,170	8,110	*10,110	5,480	-	-	*8,260	4,770	22.2 ft
	-1.5 m kg	-	-	*6 990	6 960	*5 410	3 740	*3 600	2 540	-	-	*3 190	2 430	6.2 m
	-5 ft lb	-	-	*15,260	14,940	*11,710	8,060	*7,490	5,490	-	-	*7,010	5,390	20.3 ft
	-10 ft lb	-	-	-	-	-	-	-	-	-	-	-	-	-
Boom: 4.72 m, 15' 6" 2-piece Arm: 2.5 m, 8' 2" Shoe: 600 mm, 24" CWT: 3 200 kg, 7,060 lb Dozer blade down	7.5 m kg	-	-	*5 310	*5 310	-	-	-	-	-	-	*4 030	*4 030	4.1 m
	25 ft lb	-	-	*11,820	*11,820	-	-	-	-	-	-	*9,180	*9,180	12.9 ft
	6 m kg	-	-	-	-	*4 690	4 470	-	-	-	-	*3 210	2 940	5.8 m
	20 ft lb	-	-	-	-	*10,350	9,600	-	-	-	-	*7,140	6,630	18.7 ft
	4.5 m kg	-	-	*4 100	*4 100	*4 890	4 370	*4 570	2 770	-	-	*2 940	2 300	6.7 m
	15 ft lb	-	-	*9,040	*9,040	*10,740	9,430	*9,950	5,970	-	-	*6,500	5,130	21.8 ft
	3 m kg	-	-	-	-	*6 060	4 150	*4 760	2 700	-	-	*2 880	2 030	7.2 m
	10 ft lb	-	-	-	-	*13,140	8,960	*10,350	5,810	-	-	*6,350	4,490	23.5 ft
	1.5 m kg	-	-	-	-	*6 670	3 900	*4 930	2 590	-	-	*2 980	1 930	7.3 m
	5 ft lb	-	-	-	-	*14,440	8,430	*10,690	5,590	-	-	*6,560	4,260	24.0 ft
	0 m kg	-	-	-	-	*6 630	3 740	*4 790	2 510	-	-	*3 250	1 970	7.2 m
	0 ft lb	-	-	-	-	*14,380	8,070	*10,350	5,420	-	-	*7,150	4,360	23.5 ft
	-1.5 m kg	-	-	*7 870	6 860	*5 760	3 690	*4 030	2 490	-	-	*3 110	2 190	6.6 m
	-5 ft lb	-	-	*17,120	14,740	*12,460	7,960	*8,600	5,370	-	-	*6,840	4,840	21.7 ft
	-3.0 m kg	-	-	-	-	*3 840	3 740	-	-	-	-	-	-	5.7 m
	-10 ft lb	-	-	-	-	*8,120	8,080	-	-	-	-	-	-	18.5 ft
Boom: 4.72 m, 15' 6" 2-piece Arm: 3.0 m, 9' 10" Shoe: 600 mm, 24" CWT: 3 200 kg, 7,060 lb Dozer blade down	7.5 m kg	-	-	-	-	*3 980	*3 980	-	-	-	-	*3 180	*3 180	5.0 m
	25 ft lb	-	-	-	-	*8,390	*8,390	-	-	-	-	*7,180	*7,180	15.8 ft
	6 m kg	-	-	-	-	*3 770	*3 770	*3 530	2 800	-	-	*2 640	2 480	6.4 m
	20 ft lb	-	-	-	-	*8,400	*8,400	*7,300	5,990	-	-	*5,870	5,580	20.8 ft
	4.5 m kg	-	-	-	-	*3 730	*3 730	*3 990	2 780	-	-	*2 440	2 010	7.2 m
	15 ft lb	-	-	-	-	*8,260	*8,260	*8,730	5,990	-	-	*5,390	4,470	23.6 ft
	3 m kg	-	-	-	-	*5 060	4 190	*4 530	2 680	*3 170	1 870	*2 390	1 790	7.7 m
	10 ft lb	-	-	-	-	*10,950	9,030	*9,850	5,790	*5,950	4,010	*5,270	3,960	25.2 ft
	1.5 m kg	-	-	-	-	*6 410	3 900	*4 790	2 560	*3 760	1 830	*2 460	1 710	7.8 m
	5 ft lb	-	-	-	-	*13,890	8,410	*10,390	5,520	*7,560	3,930	*5,410	3,770	25.7 ft
	0 m kg	-	-	-	-	*6 630	3 690	*4 800	2 460	*3 470	1 790	*2 640	1 740	7.7 m
	0 ft lb	-	-	-	-	*14,360	7,950	*10,390	5,300	*6,500	3,860	*5,820	3,830	25.1 ft
	-1.5 m kg	-	-	*7 460	6 700	*6 040	3 600	*4 310	2 410	-	-	*2 910	1 900	7.2 m
	-5 ft lb	-	-	*17,150	14,390	*13,070	7,760	*9,260	5,200	-	-	*6,410	4,200	23.5 ft
	-3.0 m kg	-	-	*6 170	*6 170	*4 530	3 620	*2 830	2 440	-	-	*2 260	*2 260	6.3 m
	-10 ft lb	-	-	*13,260	*13,260	*9,670	7,810	*5,710	5,290	-	-	*4,920	*4,920	20.6 ft

Notes: 1. Machine in "Fine Mode-F" (Power Boost) for lifting capacities. 2. The above loads are in compliance with SAE J1097 and ISO 10567 Hydraulic Excavator Lifting Capacity Standards.

3. Rated loads do not exceed 87% of hydraulic lifting capacity or 75% of tipping load. 4. Rated loads marked with an asterisk (*) are limited by hydraulic capacity rather than tipping load.

LIFTING CAPACITY ECR145EL

Lifting capacity at the arm end without bucket.

For lifting capacity including bucket, simply subtract actual weight of the direct fit bucket or the bucket with quick coupler from the following values.

	Lifting hook related to ground level	1.5 m, 5 ft		3.0 m, 10 ft		4.5 m, 15 ft		6.0 m, 20 ft		7.5 m, 25 ft		Max. Reach		
		Along UC	Across UC	Along UC	Across UC	Along UC	Across UC	Along UC	Across UC	Along UC	Across UC	Along UC	Across UC	
Boom: 4.6 m, 15' 1" Arm: 2.1 m, 6' 11" Shoe: 700 mm, 28" CWT: 3 200 kg, 7,060 lb	7.5 m kg	-	-	-	-	-	-	-	-	-	-	*5 360	*5 360	2.8 m
	25 ft lb	-	-	-	-	-	-	-	-	-	-	*12,520	*12,520	8.4 ft
	6 m kg	-	-	*4 360	*4 360	*4 190	3 930	-	-	-	-	*4 220	3 340	5.0 m
	20 ft lb	-	-	*9,600	*9,600	*9,300	8,440	-	-	-	-	*9,380	7,590	16.0 ft
	4.5 m kg	-	-	*5 220	*5 220	*4 360	3 870	3 920	2 450	-	-	3 900	2 440	6.0 m
	15 ft lb	-	-	*11,270	*11,270	*9,500	8,350	-	-	-	-	*8,630	5,450	19.6 ft
	3 m kg	-	-	*7 560	6 810	*5 090	3 690	3 870	2 410	-	-	3 370	2 100	6.6 m
	10 ft lb	-	-	*16,180	14,700	*11,030	7,960	8,330	5,190	-	-	7,450	4,640	21.5 ft
	1.5 m kg	-	-	-	-	5 840	3 480	3 780	2 330	-	-	3 200	1 980	6.7 m
	5 ft lb	-	-	-	-	12,570	7,520	8,140	5,020	-	-	7,050	4,360	22.0 ft
	0 m kg	-	-	*5 520	*5 520	5 690	3 350	3 710	2 260	-	-	3 290	2 020	6.5 m
	0 ft lb	-	-	*12,930	*12,930	12,240	7,240	8,000	4,890	-	-	7,270	4,470	21.4 ft
	-1.5 m kg	*5 200	*5 200	*8 140	6 100	5 650	3 320	-	-	-	-	3 750	2 290	5.9 m
	-5 ft lb	*11,730	*11,730	*17,690	13,110	12,170	7,170	-	-	-	-	8,310	5,070	19.5 ft
	-3.0 m kg	-	-	*6 040	*6 040	*4 140	3 400	-	-	-	-	*3 610	3 090	4.8 m
	-10 ft lb	-	-	*12,980	*12,980	*8,710	7,350	-	-	-	-	*7,930	6,910	15.7 ft
Boom: 4.6 m, 15' 1" Arm: 2.5 m, 8' 2" Shoe: 700 mm, 28" CWT: 3 200 kg, 7,060 lb	7.5 m kg	-	-	*4 380	*4 380	-	-	-	-	-	-	*4 270	*4 270	3.7 m
	25 ft lb	-	-	*9,980	*9,980	-	-	-	-	-	-	*9,730	*9,730	11.3 ft
	6 m kg	-	-	-	-	*3 750	*3 750	-	-	-	-	*3 440	2 890	5.5 m
	20 ft lb	-	-	-	-	*8,310	*8,310	-	-	-	-	*7,650	6,550	17.6 ft
	4.5 m kg	-	-	*4 420	*4 420	*4 000	3 900	*3 710	2 470	-	-	*3 220	2 200	6.4 m
	15 ft lb	-	-	*9,730	*9,730	*8,730	8,430	*8,170	5,330	-	-	*7,120	4,920	21.0 ft
	3 m kg	-	-	*6 780	*6 780	*4 770	3 710	3 830	2 400	-	-	3 050	1 910	6.9 m
	10 ft lb	-	-	*14,530	*14,530	*10,340	8,030	8,350	5,200	-	-	6,830	4,250	22.7 ft
	1.5 m kg	-	-	*6 310	6 270	*5 630	3 480	3 730	2 310	-	-	2 910	1 810	7.1 m
	5 ft lb	-	-	-	-	*12,200	7,540	8,130	5,000	-	-	6,490	4,000	23.2 ft
	0 m kg	-	-	*6 130	6 020	5 610	3 320	3 640	2 230	-	-	2 980	1 840	6.9 m
	0 ft lb	-	-	*14,260	12,990	12,210	7,200	7,950	4,840	-	-	6,650	4,080	22.6 ft
	-1.5 m kg	*4 770	*4 770	*8 600	5 990	5 550	3 270	3 620	2 210	-	-	3 340	2 050	6.4 m
	-5 ft lb	*10,730	*10,730	*18,660	12,930	12,070	7,070	7,900	4,790	-	-	7,470	4,550	20.8 ft
	-3.0 m kg	*9 220	*9 220	*6 790	6 090	*4 680	3 310	-	-	-	-	*3 560	2 630	5.3 m
	-10 ft lb	*20,870	*20,870	*14,620	13,160	*10,000	7,180	-	-	-	-	*7,840	5,900	17.4 ft
Boom: 4.6 m, 15' 1" Arm: 3.0 m, 9' 10" Shoe: 700 mm, 28" CWT: 3 200 kg, 7,060 lb	7.5 m kg	-	-	-	-	*3 460	*3 460	-	-	-	-	*3 360	*3 360	4.6 m
	25 ft lb	-	-	-	-	-	-	-	-	-	-	*7,580	*7,580	14.4 ft
	6 m kg	-	-	-	-	*3 220	*3 220	*3 030	2 490	-	-	*2 830	2 430	6.1 m
	20 ft lb	-	-	-	-	*7,130	*7,130	-	-	-	-	*6,290	5,460	19.7 ft
	4.5 m kg	-	-	-	-	*3 510	*3 510	*3 350	2 480	-	-	*2 670	1 920	7.0 m
	15 ft lb	-	-	-	-	*7,660	*7,660	*7,360	5,340	-	-	*5,900	4,270	22.7 ft
	3 m kg	-	-	*5 740	*5 740	*4 300	3 740	*3 650	2 400	-	-	*2 670	1 690	7.4 m
	10 ft lb	-	-	*12,100	*12,100	*9,340	8,080	*7,960	5,170	-	-	*5,890	3,730	24.3 ft
	1.5 m kg	-	-	-	-	*5 260	3 480	3 740	2 280	2 660	1 620	2 620	1 600	7.6 m
	5 ft lb	-	-	-	-	*11,400	7,520	8,060	4,930	-	-	5,790	3,520	24.8 ft
	0 m kg	-	-	*6 540	5 960	5 630	3 280	3 640	2 190	-	-	2 670	1 620	7.4 m
	0 ft lb	-	-	*15,210	12,830	12,110	7,080	7,840	4,720	-	-	5,900	3,570	24.3 ft
	-1.5 m kg	*4 120	*4 120	*8 920	5 870	5 520	3 190	3 580	2 140	-	-	2 940	1 770	6.9 m
	-5 ft lb	*9,260	*9,260	*19,370	12,610	11,880	6,880	7,720	4,620	-	-	6,500	3,920	22.6 ft
	-3.0 m kg	*7 550	*7 550	*7 500	5 930	*5 090	3 200	-	-	-	-	*3 340	2 180	6.0 m
	-10 ft lb	*17,050	*17,050	*16,170	12,760	*10,950	6,910	-	-	-	-	*7,350	4,860	19.5 ft
	-4.5 m kg	-	-	*4 580	*4 580	-	-	-	-	-	-	*2 830	*2 830	4.4 m
	-15 ft lb	-	-	*9,520	*9,520	-	-	-	-	-	-	*6,130	*6,130	14.0 ft
Boom: 4.6 m, 15' 1" Arm: 2.1 m, 6' 11" Shoe: 700 mm, 28" CWT: 3 200 kg, 7,060 lb Dozer blade down	7.5 m kg	-	-	-	-	-	-	-	-	-	-	*5 360	*5 360	2.8 m
	25 ft lb	-	-	-	-	-	-	-	-	-	-	*12,520	*12,520	8.4 ft
	6 m kg	-	-	*4 360	*4 360	*4 190	*4 190	-	-	-	-	*4 220	3 860	5.0 m
	20 ft lb	-	-	*9,600	*9,600	*9,300	*9,300	-	-	-	-	*9,380	8,760	16.0 ft
	4.5 m kg	-	-	*5 220	*5 220	*4 360	*4 360	*3 980	2 840	-	-	*3 910	2 830	6.0 m
	15 ft lb	-	-	*11,270	*11,270	*9,500	*9,500	-	-	-	-	*8,630	6,320	19.6 ft
	3 m kg	-	-	*7 560	*7 560	*5 090	4 280	*4 150	2 800	-	-	*3 930	2 440	6.6 m
	10 ft lb	-	-	*16,180	*16,180	*11,030	9,250	*9,060	6,030	-	-	*8,650	5,410	21.5 ft
	1.5 m kg	-	-	-	-	*5 850	4 070	*4 410	2 710	-	-	*3 960	2 310	6.7 m
	5 ft lb	-	-	-	-	*12,670	8,790	*9,570	5,860	-	-	*8,740	5,100	22.0 ft
	0 m kg	-	-	*5 520	*5 520	*6 120	3 940	*4 450	2 650	-	-	*3 980	2 370	6.5 m
	0 ft lb	-	-	*12,930	*12,930	*13,260	8,500	*9,620	5,730	-	-	*8,770	5,230	21.4 ft
	-1.5 m kg	*5 200	*5 200	*8 140	7 280	*5 670	3 910	-	-	-	-	*3 930	2 680	5.9 m
	-5 ft lb	*11,730	*11,730	*17,690	15,630	*12,280	8,430	-	-	-	-	*8,660	5,940	19.5 ft
	-3.0 m kg	-	-	*6 040	*6 040	*4 140	3 990	-	-	-	-	*3 610	3 610	4.8 m
	-10 ft lb	-	-	*12,980	*12,980	*8,710	8,620	-	-	-	-	*7,930	*7,930	15.7 ft

Notes: 1. Machine in "Fine Mode-F" (Power Boost) for lifting capacities. 2. The above loads are in compliance with SAE J1097 and ISO 10567 Hydraulic Excavator Lifting Capacity Standards.

3. Rated loads do not exceed 87% of hydraulic lifting capacity or 75% of tipping load. 4. Rated loads marked with an asterisk (*) are limited by hydraulic capacity rather than tipping load.

Specifications

LIFTING CAPACITY ECR145EL

Lifting capacity at the arm end without bucket.

For lifting capacity including bucket, simply subtract actual weight of the direct fit bucket or the bucket with quick coupler from the following values.

	Lifting hook related to ground level	1.5 m, 5 ft		3.0 m, 10 ft		4.5 m, 15 ft		6.0 m, 20 ft		7.5 m, 25 ft		Max. Reach		
		Along UC	Across UC	Along UC	Across UC	Along UC	Across UC	Along UC	Across UC	Along UC	Across UC	Along UC	Across UC	
Boom: 4.6 m, 15' 1" Arm: 2.5 m, 8' 2" Shoe: 700 mm, 28" CWT: 3 200 kg, 7,060 lb Dozer blade down	7.5 m kg	-	-	*4 380	*4 380	-	-	-	-	-	-	*4 270	*4 270	3.7 m
	25 ft lb	-	-	*9,980	*9,980	-	-	-	-	-	-	*9,730	*9,730	11.3 ft
	6 m kg	-	-	-	-	*3 750	*3 750	-	-	-	-	*3 440	3 350	5.5 m
	20 ft lb	-	-	-	-	*8,310	*8,310	-	-	-	-	*7,650	7,560	17.6 ft
	4.5 m kg	-	-	*4 420	*4 420	*4 000	*4 000	*3 710	2 870	-	-	*3 220	2 570	6.4 m
	15 ft lb	-	-	*9,730	*9,730	*8,730	*8,730	*8,170	6,180	-	-	*7,120	5,710	21.0 ft
	3 m kg	-	-	*6 780	*6 780	*4 770	4 320	*3 950	2 800	-	-	*3 240	2 240	6.9 m
	10 ft lb	-	-	*14,530	*14,530	*10,340	9,310	*8,620	6,040	-	-	*7,130	4,960	22.7 ft
	1.5 m kg	-	-	-	-	*5 630	4 080	*4 280	2 710	-	-	*3 440	2 120	7.1 m
	5 ft lb	-	-	-	-	*12,200	8,810	*9,290	5,840	-	-	*7,570	4,690	23.2 ft
	0 m kg	-	-	*6 130	*6 130	*6 060	3 920	*4 430	2 630	-	-	*3 730	2 170	6.9 m
	0 ft lb	-	-	*14,260	*14,260	*13,140	8,460	*9,600	5,680	-	-	*8,230	4,790	22.6 ft
	-1.5 m kg	*4 770	*4 770	*8 600	7 200	*5 820	3 870	*4 130	2 600	-	-	*3 730	2 410	6.4 m
	-5 ft lb	*10,730	*10,730	*18,660	15,460	*12,600	8,340	*8,860	5,630	-	-	*8,220	5,340	20.8 ft
	-3.0 m kg	*9 220	*9 220	*6 790	*6 790	*4 680	3 910	-	-	-	-	*3 560	3 100	5.3 m
	-10 ft lb	*20,870	*20,870	*14,620	*14,620	*10,000	8,440	-	-	-	-	*7,840	6,910	17.4 ft
Boom: 4.6 m, 15' 1" Arm: 3.0 m, 9' 10" Shoe: 700 mm, 28" CWT: 3 200 kg, 7,060 lb Dozer blade down	7.5 m kg	-	-	-	-	*3 460	*3 460	-	-	-	-	*3 360	*3 360	4.6 m
	25 ft lb	-	-	-	-	-	-	-	-	-	-	*7,580	*7,580	14.4 ft
	6 m kg	-	-	-	-	*3 220	*3 220	*3 030	2 880	-	-	*2 830	2 810	6.1 m
	20 ft lb	-	-	-	-	*7,130	*7,130	-	-	-	-	*6,290	*6,290	19.7 ft
	4.5 m kg	-	-	-	-	*3 510	*3 510	*3 350	2 880	-	-	*2 670	2 240	7.0 m
	15 ft lb	-	-	-	-	*7,660	*7,660	*7,360	6,190	-	-	*5,900	4,980	22.7 ft
	3 m kg	-	-	*5 740	*5 740	*4 300	*4 300	*3 650	2 790	-	-	*2 670	1 980	7.4 m
	10 ft lb	-	-	*12,100	*12,100	*9,340	*9,340	*7,960	6,010	-	-	*5,890	4,380	24.3 ft
	1.5 m kg	-	-	-	-	*5 260	4 080	*4 050	2 670	*3 120	1 910	*2 810	1 880	7.6 m
	5 ft lb	-	-	-	-	*11,400	8,800	*8,800	5,770	-	-	*6,180	4,150	24.8 ft
	0 m kg	-	-	*6 540	*6 540	*5 880	3 870	*4 320	2 580	-	-	*3 110	1 910	7.4 m
	0 ft lb	-	-	*15,210	*15,210	*12,750	8,350	*9,360	5,560	-	-	*6,860	4,220	24.3 ft
	-1.5 m kg	*4 120	*4 120	*8 920	7 050	*5 880	3 780	*4 220	2 530	-	-	*3 410	2 090	6.9 m
	-5 ft lb	*9,260	*9,260	*19,370	15,130	*12,730	8,140	*9,120	5,450	-	-	*7,530	4,630	22.6 ft
	-3.0 m kg	*7 550	*7 550	*7 500	7 110	*5 090	3 790	-	-	-	-	*3 340	2 570	6.0 m
	-10 ft lb	*17,050	*17,050	*16,170	15,280	*10,950	8,180	-	-	-	-	*7,350	5,720	19.5 ft
	-4.5 m kg	-	-	*4 580	*4 580	-	-	-	-	-	-	*2 830	*2 830	4.4 m
	-15 ft lb	-	-	*9,520	*9,520	-	-	-	-	-	-	*6,130	*6,130	14.0 ft
Boom: 4.72 m, 15' 6" 2-piece Arm: 2.1 m, 6' 11" Shoe: 700 mm, 28" CWT: 3 200 kg, 7,060 lb	7.5 m kg	-	-	*6 240	*6 240	-	-	-	-	-	-	*5 300	*5 300	3.4 m
	25 ft lb	-	-	*12,970	*12,970	-	-	-	-	-	-	*12,260	*12,260	10.3 ft
	6 m kg	-	-	*5 290	*5 290	*5 480	3 960	-	-	-	-	*3 950	3 030	5.3 m
	20 ft lb	-	-	*11,850	*11,850	*12,040	8,510	-	-	-	-	*8,810	6,850	17.0 ft
	4.5 m kg	-	-	*5 480	*5 480	*5 690	3 880	3 950	2 460	-	-	*3 580	2 280	6.3 m
	15 ft lb	-	-	*11,950	*11,950	*12,370	8,370	8,490	5,280	-	-	*7,910	5,070	20.5 ft
	3 m kg	-	-	-	-	6 110	3 670	3 890	2 400	-	-	3 200	1 970	6.8 m
	10 ft lb	-	-	-	-	13,140	7,940	8,370	5,170	-	-	7,080	4,370	22.2 ft
	1.5 m kg	-	-	-	-	5 850	3 450	3 790	2 310	-	-	3 050	1 870	6.9 m
	5 ft lb	-	-	-	-	12,590	7,460	8,170	4,990	-	-	6,740	4,130	22.8 ft
	0 m kg	-	-	-	-	5 700	3 320	3 720	2 250	-	-	3 150	1 920	6.8 m
	0 ft lb	-	-	-	-	12,270	7,180	8,020	4,860	-	-	6,940	4,230	22.2 ft
	-1.5 m kg	-	-	*6 990	6 080	*5 410	3 300	*3 600	2 250	-	-	*3 190	2 160	6.2 m
	-5 ft lb	-	-	*15,260	13,060	*11,710	7,120	*7,490	4,870	-	-	*7,010	4,780	20.3 ft
Boom: 4.72 m, 15' 6" 2-piece Arm: 2.5 m, 8' 2" Shoe: 700 mm, 28" CWT: 3 200 kg, 7,060 lb	7.5 m kg	-	-	*5 310	*5 310	-	-	-	-	-	-	*4 030	*4 030	4.1 m
	25 ft lb	-	-	*11,820	*11,820	-	-	-	-	-	-	*9,180	*9,180	12.9 ft
	6 m kg	-	-	-	-	*4 690	4 020	-	-	-	-	*3 210	2 630	5.8 m
	20 ft lb	-	-	-	-	*10,350	8,640	-	-	-	-	*7,140	5,940	18.7 ft
	4.5 m kg	-	-	*4 100	*4 100	*4 890	3 930	3 980	2 480	-	-	*2 940	2 050	6.7 m
	15 ft lb	-	-	*9,040	*9,040	*10,740	8,460	8,570	5,340	-	-	*6,500	4,570	21.8 ft
	3 m kg	-	-	-	-	*6 060	3 710	3 900	2 400	-	-	*2 880	1 800	7.2 m
	10 ft lb	-	-	-	-	*13,140	8,010	8,390	5,190	-	-	*6,350	3,990	23.5 ft
	1.5 m kg	-	-	-	-	5 870	3 470	3 780	2 300	-	-	2 810	1 710	7.3 m
	5 ft lb	-	-	-	-	12,640	7,480	8,160	4,970	-	-	6,190	3,780	24.0 ft
	0 m kg	-	-	-	-	5 680	3 300	3 700	2 220	-	-	2 880	1 750	7.2 m
	0 ft lb	-	-	-	-	12,230	7,130	7,970	4,800	-	-	6,350	3,850	23.5 ft
	-1.5 m kg	-	-	*7 870	5 990	5 630	3 250	3 670	2 200	-	-	*3 110	1 940	6.6 m
	-5 ft lb	-	-	*17,120	12,870	12,110	7,020	7,920	4,750	-	-	*6,840	4,290	21.7 ft
	-3.0 m kg	-	-	-	-	*3 840	3 310	-	-	-	-	-	-	5.7 m
	-10 ft lb	-	-	-	-	*8,120	7,140	-	-	-	-	-	-	18.5 ft

Notes: 1. Machine in "Fine Mode-F" (Power Boost) for lifting capacities. 2. The above loads are in compliance with SAE J1097 and ISO 10567 Hydraulic Excavator Lifting Capacity Standards.

3. Rated loads do not exceed 87% of hydraulic lifting capacity or 75% of tipping load. 4. Rated loads marked with an asterisk (*) are limited by hydraulic capacity rather than tipping load.

LIFTING CAPACITY ECR145EL

Lifting capacity at the arm end without bucket.

For lifting capacity including bucket, simply subtract actual weight of the direct fit bucket or the bucket with quick coupler from the following values.

	Lifting hook related to ground level	1.5 m, 5 ft		3.0 m, 10 ft		4.5 m, 15 ft		6.0 m, 20 ft		7.5 m, 25 ft		Max. Reach	
		Along UC	Across UC	Along UC	Across UC	Along UC	Across UC	Along UC	Across UC	Along UC	Across UC	Along UC	Across UC
Boom: 4.72 m, 15' 6" 2-piece Arm: 3.0 m, 9' 10" Shoe: 700 mm, 28" CWT: 3 200 kg, 7,060 lb	7.5 m kg	-	-	-	-	*3 980	*3 980	-	-	-	-	*3 180	*3 180
	25 ft lb	-	-	-	-	*8,390	*8,390	-	-	-	-	*7,180	*7,180
	6 m kg	-	-	-	-	*3 770	*3 770	*3 530	2 510	-	-	*2 640	2 220
	20 ft lb	-	-	-	-	*8,400	*8,400	*7,300	5,360	-	-	*5,870	4,980
	4.5 m kg	-	-	-	-	*3 730	*3 730	*3 990	2 490	-	-	*2 440	1 780
	15 ft lb	-	-	-	-	*8,260	*8,260	8,600	5,360	-	-	*5,390	3,970
	3 m kg	-	-	-	-	*5 060	3 740	3 890	2 390	2 720	1 650	*2 390	1 580
	10 ft lb	-	-	-	-	*10,950	8,070	8,380	5,160	5,850	3,550	*5,270	3,500
	1.5 m kg	-	-	-	-	5 880	3 460	3 760	2 270	2 670	1 610	*2 460	1 500
	5 ft lb	-	-	-	-	12,640	7,470	8,100	4,900	5,760	3,470	*5,410	3,320
	0 m kg	-	-	-	-	5 640	3 250	3 640	2 170	2 630	1 570	*2 560	1 530
	0 ft lb	-	-	-	-	12,120	7,010	7,850	4,680	5,680	3,400	*5,640	3,370
	-1.5 m kg	-	-	*7 460	5 830	5 530	3 160	3 590	2 120	-	-	*2 800	1 670
	-5 ft lb	-	-	*17,150	12,520	11,900	6,820	7,740	4,580	-	-	*6,190	3,700
	-3.0 m kg	-	-	*6 170	5 910	*4 530	3 180	*2 830	2 150	-	-	*2 260	2 030
	-10 ft lb	-	-	*13,260	12,710	*9,670	6,870	*5,710	4,670	-	-	*4,920	4,530
Boom: 4.72 m, 15' 6" 2-piece Arm: 2.1 m, 6' 11" Shoe: 700 mm, 28" CWT: 3 200 kg, 7,060 lb Dozer blade down	7.5 m kg	-	-	*6 240	*6 240	-	-	-	-	-	-	*5 300	*5 300
	25 ft lb	-	-	*12,970	*12,970	-	-	-	-	-	-	*12,260	*12,260
	6 m kg	-	-	*5 290	*5 290	*5 480	4 570	-	-	-	-	*3 950	3 500
	20 ft lb	-	-	*11,850	*11,850	*12,040	9,820	-	-	-	-	*8,810	7,930
	4.5 m kg	-	-	*5 480	*5 480	*5 690	4 490	*4 790	2 860	-	-	*3 580	2 650
	15 ft lb	-	-	*11,950	*11,950	*12,370	9,680	*9,840	6,140	-	-	*7,910	5,900
	3 m kg	-	-	-	-	*6 320	4 280	*4 900	2 790	-	-	*3 500	2 310
	10 ft lb	-	-	-	-	*13,700	9,230	*10,640	6,030	-	-	*7,710	5,100
	1.5 m kg	-	-	-	-	*6 780	4 050	*4 970	2 700	-	-	*3 630	2 190
	5 ft lb	-	-	-	-	*14,700	8,740	*10,780	5,840	-	-	*7,980	4,840
	0 m kg	-	-	-	-	*6 530	3 920	*4 690	2 640	-	-	*3 750	2 250
	0 ft lb	-	-	-	-	*14,170	8,450	*10,110	5,700	-	-	*8,260	4,970
	-1.5 m kg	-	-	*6 990	*6 990	*5 410	3 890	*3 600	2 640	-	-	*3 190	2 530
	-5 ft lb	-	-	*15,260	*15,260	*11,710	8,400	*7,490	5,710	-	-	*7,010	5,610
Boom: 4.72 m, 15' 6" 2-piece Arm: 2.5 m, 8' 2" Shoe: 700 mm, 28" CWT: 3 200 kg, 7,060 lb Dozer blade down	7.5 m kg	-	-	*5 310	*5 310	-	-	-	-	-	-	*4 030	*4 030
	25 ft lb	-	-	*11,820	*11,820	-	-	-	-	-	-	*9,180	*9,180
	6 m kg	-	-	-	-	*4 690	4 630	-	-	-	-	*3 210	3 050
	20 ft lb	-	-	-	-	*10,350	9,950	-	-	-	-	*7,140	6,880
	4.5 m kg	-	-	*4 100	*4 100	*4 890	4 540	*4 570	2 880	-	-	*2 940	2 390
	15 ft lb	-	-	*9,040	*9,040	*10,740	9,770	*9,950	6,200	-	-	*6,500	5,330
	3 m kg	-	-	-	-	*6 060	4 310	*4 760	2 800	-	-	*2 880	2 110
	10 ft lb	-	-	-	-	*13,140	9,310	*10,350	6,040	-	-	*6,350	4,670
	1.5 m kg	-	-	-	-	*6 670	4 060	*4 930	2 700	-	-	*2 980	2 010
	5 ft lb	-	-	-	-	*14,440	8,770	*10,690	5,820	-	-	*6,560	4,440
	0 m kg	-	-	-	-	*6 630	3 900	*4 790	2 620	-	-	*3 250	2 060
	0 ft lb	-	-	-	-	*14,380	8,410	*10,350	5,650	-	-	*7,150	4,540
	-1.5 m kg	-	-	*7 870	7 180	*5 760	3 850	*4 030	2 590	-	-	*3 110	2 280
	-5 ft lb	-	-	*17,120	15,420	*12,460	8,300	*8,600	5,600	-	-	*6,840	5,050
	-3.0 m kg	-	-	-	-	*3 840	-	-	-	-	-	-	-
	-10 ft lb	-	-	-	-	*8,120	*8,120	-	-	-	-	-	-
Boom: 4.72 m, 15' 6" 2-piece Arm: 3.0 m, 9' 10" Shoe: 700 mm, 28" CWT: 3 200 kg, 7,060 lb Dozer blade down	7.5 m kg	-	-	-	-	*3 980	*3 980	-	-	-	-	*3 180	*3 180
	25 ft lb	-	-	-	-	*8,390	*8,390	-	-	-	-	*7,180	*7,180
	6 m kg	-	-	-	-	*3 770	*3 770	*3 530	2 910	-	-	*2 640	2 580
	20 ft lb	-	-	-	-	*8,400	*8,400	*7,300	6,220	-	-	*5,870	5,800
	4.5 m kg	-	-	-	-	*3 730	*3 730	*3 990	2 890	-	-	*2 440	2 090
	15 ft lb	-	-	-	-	*8,260	*8,260	*8,730	6,220	-	-	*5,390	4,650
	3 m kg	-	-	-	-	*5 060	4 350	*4 530	2 790	*3 170	1 950	*2 390	1 860
	10 ft lb	-	-	-	-	*10,950	9,380	*9,850	6,010	*5,950	4,180	*5,270	4,130
	1.5 m kg	-	-	-	-	*6 410	4 060	*4 790	2 670	*3 760	1 900	*2 460	1 780
	5 ft lb	-	-	-	-	*13,890	8,760	*10,390	5,750	*7,560	4,100	*5,410	3,930
	0 m kg	-	-	-	-	*6 630	3 850	*4 800	2 560	*3 470	1 870	*2 640	1 810
	0 ft lb	-	-	-	-	*14,360	8,290	*10,390	5,530	*6,500	4,030	*5,820	4,000
	-1.5 m kg	-	-	*7 460	7 020	*3 760	3 760	*4 310	2 510	-	-	*2 910	1 980
	-5 ft lb	-	-	*17,150	15,060	*13,070	8,100	*9,260	5,420	-	-	*6,410	4,380
	-3.0 m kg	-	-	*6 170	*6 170	*4 530	3 780	*2 830	2 550	-	-	*2 260	*2 260
	-10 ft lb	-	-	*13,260	*13,260	*9,670	8,150	*5,710	5,520	-	-	*4,920	*4,920

Notes: 1. Machine in "Fine Mode-F" (Power Boost) for lifting capacities. 2. The above loads are in compliance with SAE J1097 and ISO 10567 Hydraulic Excavator Lifting Capacity Standards.

3. Rated loads do not exceed 87% of hydraulic lifting capacity or 75% of tipping load. 4. Rated loads marked with an asterisk (*) are limited by hydraulic capacity rather than tipping load.

Specifications

LIFTING CAPACITY ECR145EL

Lifting capacity at the arm end without bucket.

For lifting capacity including bucket, simply subtract actual weight of the direct fit bucket or the bucket with quick coupler from the following values.

	Lifting hook related to ground level	1.5 m, 5 ft		3.0 m, 10 ft		4.5 m, 15 ft		6.0 m, 20 ft		7.5 m, 25 ft		Max. Reach		
		Along UC	Across UC	Along UC	Across UC	Along UC	Across UC	Along UC	Across UC	Along UC	Across UC	Along UC	Across UC	
Boom: 4.6 m, 15' 1" Arm: 2.1 m, 6' 11" Shoe: 750 mm, 30" CWT: 3 200 kg, 7,060 lb	7.5 m kg	-	-	-	-	-	-	-	-	-	-	*5 360	*5 360	2.8 m
	25 ft lb	-	-	-	-	-	-	-	-	-	-	*12,520	*12,520	8.4 ft
	6 m kg	-	-	*4 360	*4 360	*4 190	3 950	-	-	-	-	*4 220	3 360	5.0 m
	20 ft lb	-	-	*9,600	*9,600	*9,300	8,490	-	-	-	-	*9,380	7,640	16.0 ft
	4.5 m kg	-	-	*5 220	*5 220	*4 360	3 900	3 950	2 470	-	-	*3 910	2 460	6.0 m
	15 ft lb	-	-	*11,270	*11,270	*9,500	8,400	-	-	-	-	*8,630	5,490	19.6 ft
	3 m kg	-	-	*7 560	6 850	*5 090	3 710	3 890	2 420	-	-	3 390	2 110	6.6 m
	10 ft lb	-	-	*16,180	14,790	*11,030	8,020	8,390	5,230	-	-	7,500	4,680	21.5 ft
	1.5 m kg	-	-	-	-	*5 850	3 510	3 800	2 340	-	-	3 220	1 990	6.7 m
	5 ft lb	-	-	-	-	12,660	7,570	8,200	5,060	-	-	7,110	4,390	22.0 ft
	0 m kg	-	-	*5 520	*5 520	5 730	3 380	3 740	2 280	-	-	3 320	2 040	6.5 m
	0 ft lb	-	-	*12,930	*12,930	12,330	7,290	8,060	4,930	-	-	7,320	4,500	21.4 ft
	-1.5 m kg	*5 200	*5 200	*8 140	6 140	*5 670	3 350	-	-	-	-	3 780	2 310	5.9 m
	-5 ft lb	*11,730	*11,730	*17,690	13,200	12,260	7,220	-	-	-	-	8,370	5,110	19.5 ft
	-3.0 m kg	-	-	*6 040	*6 040	*4 140	3 420	-	-	-	-	*3 610	3 110	4.8 m
	-10 ft lb	-	-	*12,980	*12,980	*8,710	7,400	-	-	-	-	*7,930	6,960	15.7 ft
Boom: 4.6 m, 15' 1" Arm: 2.5 m, 8' 2" Shoe: 750 mm, 30" CWT: 3 200 kg, 7,060 lb	7.5 m kg	-	-	*4 380	*4 380	-	-	-	-	-	-	*4 270	*4 270	3.7 m
	25 ft lb	-	-	*9,980	*9,980	-	-	-	-	-	-	*9,730	*9,730	11.3 ft
	6 m kg	-	-	-	-	*3 750	*3 750	-	-	-	-	*3 440	2 920	5.5 m
	20 ft lb	-	-	-	-	*8,310	*8,310	-	-	-	-	*7,650	6,590	17.6 ft
	4.5 m kg	-	-	*4 420	*4 420	*4 000	3 940	*3 710	2 500	-	-	*3 220	2 220	6.4 m
	15 ft lb	-	-	*9,730	*9,730	*8,730	8,490	*8,170	5,370	-	-	*7,120	4,950	21.0 ft
	3 m kg	-	-	*6 780	*6 780	*4 770	3 740	3 900	2 430	-	-	3 110	1 930	6.9 m
	10 ft lb	-	-	*14,530	*14,530	*10,340	8,080	8,410	5,240	-	-	6,880	4,280	22.7 ft
	1.5 m kg	-	-	-	-	*5 630	3 520	3 800	2 330	-	-	2 960	1 830	7.1 m
	5 ft lb	-	-	-	-	*12,200	7,590	8,190	5,040	-	-	6,540	4,030	23.2 ft
	0 m kg	-	-	*6 130	6 080	5 720	3 360	3 710	2 260	-	-	3 040	1 860	6.9 m
	0 ft lb	-	-	*14,260	13,080	12,300	7,250	8,010	4,880	-	-	6,710	4,110	22.6 ft
	-1.5 m kg	*4 770	*4 770	*8 600	6 060	5 650	3 300	3 690	2 230	-	-	3 400	2 070	6.4 m
	-5 ft lb	*10,730	*10,730	*18,660	13,030	12,160	7,130	7,960	4,830	-	-	7,530	4,580	20.8 ft
	-3.0 m kg	*9 220	*9 220	*6 790	6 160	*4 680	3 350	-	-	-	-	*3 560	2 660	5.3 m
	-10 ft lb	*20,870	*20,870	*14,620	13,250	*10,000	7,230	-	-	-	-	*7,840	5,940	17.4 ft
Boom: 4.6 m, 15' 1" Arm: 3.0 m, 9' 10" Shoe: 750 mm, 30" CWT: 3 200 kg, 7,060 lb	7.5 m kg	-	-	-	-	*3 460	*3 460	-	-	-	-	*3 360	*3 360	4.6 m
	25 ft lb	-	-	-	-	-	-	-	-	-	-	*7,580	*7,580	14.4 ft
	6 m kg	-	-	-	-	*3 220	*3 220	*3 030	2 500	-	-	*2 830	2 440	6.1 m
	20 ft lb	-	-	-	-	*7,130	*7,130	-	-	-	-	*6,290	5,500	19.7 ft
	4.5 m kg	-	-	-	-	*3 510	*3 510	*3 350	2 500	-	-	*2 670	1 930	7.0 m
	15 ft lb	-	-	-	-	*7,660	*7,660	*7,360	5,380	-	-	*5,900	4,300	22.7 ft
	3 m kg	-	-	*5 740	*5 740	*4 300	3 770	*3 650	2 410	-	-	*2 670	1 700	7.4 m
	10 ft lb	-	-	*12,100	*12,100	*9,340	8,130	*7,960	5,210	-	-	*5,890	3,760	24.3 ft
	1.5 m kg	-	-	-	-	*5 260	3 510	3 770	2 300	2 680	1 630	2 640	1 610	7.6 m
	5 ft lb	-	-	-	-	*11,400	7,570	8,130	4,960	-	-	5,840	3,550	24.8 ft
	0 m kg	-	-	*6 540	6 010	5 670	3 310	3 660	2 200	-	-	2 700	1 630	7.4 m
	0 ft lb	-	-	*15,210	12,920	12,200	7,130	7,900	4,760	-	-	5,950	3,600	24.3 ft
	-1.5 m kg	*4 120	*4 120	*8 920	5 910	5 560	3 210	3 610	2 150	-	-	2 960	1 780	6.9 m
	-5 ft lb	*9,260	*9,260	*19,370	12,710	11,970	6,930	7,780	4,650	-	-	6,560	3,950	22.6 ft
	-3.0 m kg	*7 550	*7 550	*7 500	5 980	*5 090	3 230	-	-	-	-	*3 340	2 200	6.0 m
	-10 ft lb	*17,050	*17,050	*16,170	12,850	*10,950	6,960	-	-	-	-	*7,350	4,890	19.5 ft
	-4.5 m kg	-	-	*4 580	*4 580	-	-	-	-	-	-	*2 830	*2 830	4.4 m
	-15 ft lb	-	-	*9,520	*9,520	-	-	-	-	-	-	*6,130	*6,130	14.0 ft
Boom: 4.6 m, 15' 1" Arm: 2.1 m, 6' 11" Shoe: 750 mm, 30" CWT: 3 200 kg, 7,060 lb Dozer blade down	7.5 m kg	-	-	-	-	-	-	-	-	-	-	*5 360	*5 360	2.8 m
	25 ft lb	-	-	-	-	-	-	-	-	-	-	*12,520	*12,520	8.4 ft
	6 m kg	-	-	*4 360	*4 360	*4 190	*4 190	-	-	-	-	*4 220	3 880	5.0 m
	20 ft lb	-	-	*9,600	*9,600	*9,300	*9,300	-	-	-	-	*9,380	8,810	16.0 ft
	4.5 m kg	-	-	*5 220	*5 220	*4 360	*4 360	*3 980	2 860	-	-	*3 910	2 850	6.0 m
	15 ft lb	-	-	*11,270	*11,270	*9,500	*9,500	-	-	-	-	*8,630	6,360	19.6 ft
	3 m kg	-	-	*7 560	*7 560	*5 090	4 310	*4 150	2 820	-	-	*3 930	2 460	6.6 m
	10 ft lb	-	-	*16,180	*16,180	*11,030	9,300	*9,060	6,070	-	-	*8,650	5,440	21.5 ft
	1.5 m kg	-	-	-	-	*5 850	4 100	*4 410	2 730	-	-	*3 960	2 330	6.7 m
	5 ft lb	-	-	-	-	*12,670	8,850	*9,570	5,900	-	-	*8,740	5,130	22.0 ft
	0 m kg	-	-	*5 520	*5 520	*6 120	3 970	*4 450	2 670	-	-	*3 980	2 390	6.5 m
	0 ft lb	-	-	*12,930	*12,930	*13,260	8,560	*9,620	5,770	-	-	*8,770	5,270	21.4 ft
	-1.5 m kg	*5 200	*5 200	*8 140	7 330	*5 670	3 940	-	-	-	-	*3 930	2 700	5.9 m
	-5 ft lb	*11,730	*11,730	*17,690	15,740	*12,280	8,490	-	-	-	-	*8,660	5,980	19.5 ft
	-3.0 m kg	-	-	*6 040	*6 040	*4 140	4 010	-	-	-	-	*3 610	*3 610	4.8 m
	-10 ft lb	-	-	*12,980	*12,980	*8,710	8,670	-	-	-	-	*7,930	*7,930	15.7 ft

Notes: 1. Machine in "Fine Mode-F" (Power Boost) for lifting capacities. 2. The above loads are in compliance with SAE J1097 and ISO 10567 Hydraulic Excavator Lifting Capacity Standards.

3. Rated loads do not exceed 87% of hydraulic lifting capacity or 75% of tipping load. 4. Rated loads marked with an asterisk (*) are limited by hydraulic capacity rather than tipping load.

LIFTING CAPACITY ECR145EL

Lifting capacity at the arm end without bucket.

For lifting capacity including bucket, simply subtract actual weight of the direct fit bucket or the bucket with quick coupler from the following values.

	Lifting hook related to ground level		1.5 m, 5 ft		3.0 m, 10 ft		4.5 m, 15 ft		6.0 m, 20 ft		7.5 m, 25 ft		Max. Reach	
			Along UC	Across UC	Along UC	Across UC	Along UC	Across UC	Along UC	Across UC	Along UC	Across UC	Along UC	Across UC
Boom: 4.6 m, 15' 1" Arm: 2.5 m, 8' 2" Shoe: 750 mm, 30" CWT: 3 200 kg, 7,060 lb Dozer blade down	7.5 m	kg	-	-	*4 380	*4 380	-	-	-	-	-	-	*4 270	*4 270
	25 ft	lb	-	-	*9,980	*9,980	-	-	-	-	-	-	*9,730	*9,730
	6 m	kg	-	-	-	-	*3 750	*3 750	-	-	-	-	*3 440	*3 370
	20 ft	lb	-	-	-	-	*8,310	*8,310	-	-	-	-	*7,650	*7,610
	4.5 m	kg	-	-	*4 420	*4 420	*4 000	*4 000	*3 710	2 890	-	-	*3 220	*2 580
	15 ft	lb	-	-	*9,730	*9,730	*8,730	*8,730	*8,170	6,220	-	-	*7,120	5,750
	3 m	kg	-	-	*6 780	*6 780	*4 770	4 340	*3 950	2 820	-	-	*3 240	2 260
	10 ft	lb	-	-	*14,530	*14,530	*10,340	9,370	*8,620	6,080	-	-	*7,130	4,990
	1.5 m	kg	-	-	-	-	*5 630	4 110	*4 280	2 720	-	-	*3 440	2 140
	5 ft	lb	-	-	-	-	*12,200	8,870	*9,290	5,880	-	-	*7,570	4,720
	0 m	kg	-	-	*6 130	*6 130	*6 060	3 950	*4 430	2 650	-	-	*3 730	2 180
	0 ft	lb	-	-	*14,260	*14,260	*13,140	8,520	*9,600	5,720	-	-	*8,230	4,820
	-1.5 m	kg	*4 770	*4 770	*8 600	7 250	*5 820	3 890	*4 130	2 620	-	-	*3 730	2 430
	-5 ft	lb	*10,730	*10,730	*18,660	15,560	*12,600	8,390	*8,860	5,670	-	-	*8,220	5,380
	-3.0 m	kg	*9 220	*9 220	*6 790	*6 790	*4 680	3 940	-	-	-	-	*3 560	3 120
	-10 ft	lb	*20,870	*20,870	*14,620	*14,620	*10,000	8,500	-	-	-	-	*7,840	6,960
Boom: 4.6 m, 15' 1" Arm: 3.0 m, 9' 10" Shoe: 750 mm, 30" CWT: 3 200 kg, 7,060 lb Dozer blade down	7.5 m	kg	-	-	-	-	*3 460	*3 460	-	-	-	-	*3 360	*3 360
	25 ft	lb	-	-	-	-	-	-	-	-	-	-	*7,580	*7,580
	6 m	kg	-	-	-	-	*3 220	*3 220	*3 030	2 900	-	-	*2 830	2 830
	20 ft	lb	-	-	-	-	*7,130	*7,130	-	-	-	-	*6,290	*6,290
	4.5 m	kg	-	-	-	-	*3 510	*3 510	*3 350	2 900	-	-	*2 670	2 260
	15 ft	lb	-	-	-	-	*7,660	*7,660	*7,360	6,230	-	-	*5,900	5,020
	3 m	kg	-	-	*5 740	*5 740	*4 300	*4 300	*3 650	2 810	-	-	*2 670	1 990
	10 ft	lb	-	-	*12,100	*12,100	*9,340	*9,340	*7,960	6,050	-	-	*5,890	4,410
	1.5 m	kg	-	-	-	-	*5 260	4 100	*4 050	2 690	*3 120	1 920	*2 810	1 900
	5 ft	lb	-	-	-	-	*11,400	8,850	*8,800	5,810	-	-	*6,180	4,190
	0 m	kg	-	-	*6 540	*6 540	*5 880	3 900	*4 320	2 590	-	-	*3 110	1 920
	0 ft	lb	-	-	*15,210	*15,210	*12,750	8,410	*9,360	5,600	-	-	*6,860	4,250
	-1.5 m	kg	*4 120	*4 120	*8 920	7 100	*5 880	3 800	*4 220	2 540	-	-	*3 410	2 110
	-5 ft	lb	*9,260	*9,260	*19,370	15,240	*12,730	8,200	*9,120	5,490	-	-	*7,530	4,660
	-3.0 m	kg	*7 550	*7 550	*7 500	7 160	*5 090	3 820	-	-	-	-	*3 340	2 590
	-10 ft	lb	*17,050	*17,050	*16,170	15,390	*10,950	8,230	-	-	-	-	*7,350	5,760
Boom: 4.72 m, 15' 6" 2-piece Arm: 2.1 m, 6' 11" Shoe: 750 mm, 30" CWT: 3 200 kg, 7,060 lb	-4.5 m	kg	-	-	*4 580	*4 580	-	-	-	-	-	-	*2 830	*2 830
	-15 ft	lb	-	-	*9,520	*9,520	-	-	-	-	-	-	*6,130	*6,130
	7.5 m	kg	-	-	*6 240	*6 240	-	-	-	-	-	-	*5 300	*5 300
	25 ft	lb	-	-	*12,970	*12,970	-	-	-	-	-	-	*12,260	*12,260
	6 m	kg	-	-	*5 290	*5 290	*5 480	3 980	-	-	-	-	*3 950	3 040
	20 ft	lb	-	-	*11,850	*11,850	*12,040	8,560	-	-	-	-	*8,810	6,900
	4.5 m	kg	-	-	*5 480	*5 480	*5 690	3 910	3 980	2 480	-	-	*3 580	2 290
	15 ft	lb	-	-	*11,950	*11,950	*12,370	8,420	8,550	5,320	-	-	*7,910	5,110
	3 m	kg	-	-	-	-	6 150	3 700	3 910	2 420	-	-	3 220	1 990
	10 ft	lb	-	-	-	-	13,230	7,990	8,430	5,210	-	-	7,130	4,400
	1.5 m	kg	-	-	-	-	5 890	3 480	3 820	2 330	-	-	3 080	1 880
	5 ft	lb	-	-	-	-	12,690	7,510	8,230	5,020	-	-	6,790	4,160
	0 m	kg	-	-	-	-	5 740	3 350	3 750	2 260	-	-	3 170	1 930
	0 ft	lb	-	-	-	-	12,360	7,230	8,080	4,890	-	-	7,000	4,260
	-1.5 m	kg	-	-	*6 990	6 120	*5 410	3 330	*3 600	2 260	-	-	*3 190	2 180
	-5 ft	lb	-	-	*15,260	13,160	*11,710	7,180	*7,490	4,900	-	-	*7,010	4,820
Boom: 4.72 m, 15' 6" 2-piece Arm: 2.5 m, 8' 2" Shoe: 750 mm, 30" CWT: 3 200 kg, 7,060 lb	7.5 m	kg	-	-	*5 310	*5 310	-	-	-	-	-	-	*4 030	*4 030
	25 ft	lb	-	-	*11,820	*11,820	-	-	-	-	-	-	*9,180	*9,180
	6 m	kg	-	-	-	-	*4 690	4 040	-	-	-	-	*3 210	2 650
	20 ft	lb	-	-	-	-	*10,350	8,690	-	-	-	-	*7,140	5,980
	4.5 m	kg	-	-	*4 100	*4 100	*4 890	3 950	4 010	2 500	-	-	*2 940	2 070
	15 ft	lb	-	-	*9,040	*9,040	*10,740	8,520	8,630	5,380	-	-	*6,500	4,610
	3 m	kg	-	-	-	-	*6 060	3 730	3 930	2 420	-	-	*2 880	1 810
	10 ft	lb	-	-	-	-	*13,140	8,060	8,450	5,220	-	-	*6,350	4,020
	1.5 m	kg	-	-	-	-	5 910	3 490	3 810	2 320	-	-	2 830	1 720
	5 ft	lb	-	-	-	-	12,730	7,540	8,220	5,010	-	-	6,240	3,810
	0 m	kg	-	-	-	-	5 730	3 330	3 720	2 240	-	-	2 900	1 760
	0 ft	lb	-	-	-	-	12,320	7,180	8,030	4,840	-	-	6,400	3,880
	-1.5 m	kg	-	-	*7 870	6 030	5 670	3 280	3 700	2 220	-	-	*3 110	1 950
	-5 ft	lb	-	-	*17,120	12,960	12,200	7,070	7,980	4,790	-	-	*6,840	4,320
	-3.0 m	kg	-	-	-	-	*3 840	3 330	-	-	-	-	-	-
	-10 ft	lb	-	-	-	-	*8,120	7,200	-	-	-	-	-	-

Notes: 1. Machine in "Fine Mode-F" (Power Boost) for lifting capacities. 2. The above loads are in compliance with SAE J1097 and ISO 10567 Hydraulic Excavator Lifting Capacity Standards.

3. Rated loads do not exceed 87% of hydraulic lifting capacity or 75% of tipping load. 4. Rated loads marked with an asterisk (*) are limited by hydraulic capacity rather than tipping load.

Specifications

LIFTING CAPACITY ECR145EL

Lifting capacity at the arm end without bucket.

For lifting capacity including bucket, simply subtract actual weight of the direct fit bucket or the bucket with quick coupler from the following values.

	Lifting hook related to ground level	1.5 m, 5 ft		3.0 m, 10 ft		4.5 m, 15 ft		6.0 m, 20 ft		7.5 m, 25 ft		Max. Reach		
		Along UC	Across UC	Along UC	Across UC	Along UC	Across UC	Along UC	Across UC	Along UC	Across UC	Along UC	Across UC	
Boom: 4.72 m, 15' 6" 2-piece Arm: 3.0 m, 9' 10" Shoe: 750 mm, 30" CWT: 3 200 kg, 7,060 lb	7.5 m kg	-	-	-	-	*3 980	*3 980	-	-	-	-	*3 180	*3 180	5.0 m
	25 ft lb	-	-	-	-	*8,390	*8,390	-	-	-	-	*7,180	*7,180	15.8 ft
	6 m kg	-	-	-	-	*3 770	*3 770	*3 530	2 520	-	-	*2 640	2 230	6.4 m
	20 ft lb	-	-	-	-	*8,400	*8,400	*7,300	5,400	-	-	*5,870	5,020	20.8 ft
	4.5 m kg	-	-	-	-	*3 730	*3 730	*3 990	2 510	-	-	*2 440	1 800	7.2 m
	15 ft lb	-	-	-	-	*8,260	*8,260	8,660	5,390	-	-	*5,390	4,000	23.6 ft
	3 m kg	-	-	-	-	*5 060	3 760	3 920	2 410	2 740	1 670	*2 390	1 590	7.7 m
	10 ft lb	-	-	-	-	*10,950	8,120	8,440	5,190	5,890	3,580	*5,270	3,530	25.2 ft
	1.5 m kg	-	-	-	-	5 920	3 480	3 790	2 290	2 700	1 620	*2 460	1 520	7.8 m
	5 ft lb	-	-	-	-	12,730	7,520	8,160	4,930	5,810	3,500	*5,410	3,350	25.7 ft
	0 m kg	-	-	-	-	5 680	3 270	3 670	2 180	2 660	1 590	2 580	1 540	7.7 m
	0 ft lb	-	-	-	-	12,210	7,070	7,920	4,710	5,730	3,420	5,690	3,400	25.1 ft
	-1.5 m kg	-	-	*7 460	5 870	5 580	3 190	3 620	2 140	-	-	2 820	1 680	7.2 m
	-5 ft lb	-	-	*17,150	12,620	11,990	6,870	7,800	4,610	-	-	6,240	3,730	23.5 ft
	-3.0 m kg	-	-	*6 170	5 950	*4 530	3 210	*2 830	2 170	-	-	*2 260	2 050	6.3 m
	-10 ft lb	-	-	*13,260	12,800	*9,670	6,920	*5,710	4,710	-	-	*4,920	4,560	20.6 ft
Boom: 4.72 m, 15' 6" 2-piece Arm: 2.1 m, 6' 11" Shoe: 750 mm, 30" CWT: 3 200 kg, 7,060 lb Dozer blade down	7.5 m kg	-	-	*6 240	*6 240	-	-	-	-	-	-	*5 300	*5 300	3.4 m
	25 ft lb	-	-	*12,970	*12,970	-	-	-	-	-	-	*12,260	*12,260	10.3 ft
	6 m kg	-	-	*5 290	*5 290	*5 480	4 600	-	-	-	-	*3 950	3 520	5.3 m
	20 ft lb	-	-	*11,850	*11,850	*12,040	9,870	-	-	-	-	*8,810	7,980	17.0 ft
	4.5 m kg	-	-	*5 480	*5 480	*5 690	4 520	*4 790	2 870	-	-	*3 580	2 670	6.3 m
	15 ft lb	-	-	*11,950	*11,950	*12,370	9,730	*9,840	6,180	-	-	*7,910	5,940	20.5 ft
	3 m kg	-	-	-	-	*6 320	4 300	*4 900	2 810	-	-	*3 500	2 320	6.8 m
	10 ft lb	-	-	-	-	*13,700	9,290	*10,640	6,070	-	-	*7,710	5,140	22.2 ft
	1.5 m kg	-	-	-	-	*6 780	4 080	*4 970	2 720	-	-	*3 630	2 210	6.9 m
	5 ft lb	-	-	-	-	*14,700	8,800	*10,780	5,880	-	-	*7,980	4,870	22.8 ft
	0 m kg	-	-	-	-	*6 530	3 940	*4 690	2 660	-	-	*3 750	2 270	6.8 m
	0 ft lb	-	-	-	-	*14,170	8,510	*10,110	5,740	-	-	*8,260	5,000	22.2 ft
	-1.5 m kg	-	-	*6 990	*6 990	*5 410	3 920	*3 600	2 660	-	-	*3 190	2 550	6.2 m
	-5 ft lb	-	-	*15,260	*15,260	*11,710	8,460	*7,490	5,750	-	-	*7,010	5,650	20.3 ft
	-10 ft lb	-	-	*15,260	*15,260	*11,710	8,460	*7,490	5,750	-	-	*7,010	5,650	20.3 ft
Boom: 4.72 m, 15' 6" 2-piece Arm: 2.5 m, 8' 2" Shoe: 750 mm, 30" CWT: 3 200 kg, 7,060 lb Dozer blade down	7.5 m kg	-	-	*5 310	*5 310	-	-	-	-	-	-	*4 030	*4 030	4.1 m
	25 ft lb	-	-	*11,820	*11,820	-	-	-	-	-	-	*9,180	*9,180	12.9 ft
	6 m kg	-	-	-	-	*4 690	4 660	-	-	-	-	*3 210	3 070	5.8 m
	20 ft lb	-	-	-	-	*10,350	10,010	-	-	-	-	*7,140	6,930	18.7 ft
	4.5 m kg	-	-	*4 100	*4 100	*4 890	4 560	*4 570	2 900	-	-	*2 940	2 410	6.7 m
	15 ft lb	-	-	*9,040	*9,040	*10,740	9,830	*9,950	6,240	-	-	*6,500	5,370	21.8 ft
	3 m kg	-	-	-	-	*6 060	4 340	*4 760	2 820	-	-	*2 880	2 130	7.2 m
	10 ft lb	-	-	-	-	*13,140	9,370	*10,350	6,080	-	-	*6,350	4,710	23.5 ft
	1.5 m kg	-	-	-	-	*6 670	4 090	*4 930	2 710	-	-	*2 980	2 030	7.3 m
	5 ft lb	-	-	-	-	*14,440	8,830	*10,690	5,860	-	-	*6,560	4,470	24.0 ft
	0 m kg	-	-	-	-	*6 630	3 930	*4 790	2 630	-	-	*3 250	2 070	7.2 m
	0 ft lb	-	-	-	-	*14,380	8,470	*10,350	5,690	-	-	*7,150	4,570	23.5 ft
	-1.5 m kg	-	-	*7 870	7 230	*5 760	3 870	*4 030	2 610	-	-	*3 110	2 300	6.6 m
	-5 ft lb	-	-	*17,120	15,520	*12,460	8,360	*8,600	5,640	-	-	*6,840	5,080	21.7 ft
	-3.0 m kg	-	-	-	-	*3 840	*3 840	-	-	-	-	-	-	5.7 m
	-10 ft lb	-	-	-	-	*8,120	*8,120	-	-	-	-	-	-	18.5 ft
Boom: 4.72 m, 15' 6" 2-piece Arm: 3.0 m, 9' 10" Shoe: 750 mm, 30" CWT: 3 200 kg, 7,060 lb Dozer blade down	7.5 m kg	-	-	-	-	*3 980	*3 980	-	-	-	-	*3 180	*3 180	5.0 m
	25 ft lb	-	-	-	-	*8,390	*8,390	-	-	-	-	*7,180	*7,180	15.8 ft
	6 m kg	-	-	-	-	*3 770	*3 770	*3 530	2 920	-	-	*2 640	2 600	6.4 m
	20 ft lb	-	-	-	-	*8,400	*8,400	*7,300	6,260	-	-	*5,870	5,840	20.8 ft
	4.5 m kg	-	-	-	-	*3 730	*3 730	*3 990	2 910	-	-	*2 440	2 110	7.2 m
	15 ft lb	-	-	-	-	*8,260	*8,260	*8,730	6,260	-	-	*5,390	4,680	23.6 ft
	3 m kg	-	-	-	-	*5 060	4 370	*4 530	2 810	*3 170	1 960	*2 390	1 880	7.7 m
	10 ft lb	-	-	-	-	*10,950	9,430	*9,850	6,050	*5,950	4,210	*5,270	4,160	25.2 ft
	1.5 m kg	-	-	-	-	*6 410	4 090	*4 790	2 680	*3 760	1 920	*2 460	1 790	7.8 m
	5 ft lb	-	-	-	-	*13,890	8,820	*10,390	5,790	*7,560	4,130	*5,410	3,960	25.7 ft
	0 m kg	-	-	-	-	*6 630	3 870	*4 800	2 580	*3 470	1 880	*2 640	1 830	7.7 m
	0 ft lb	-	-	-	-	*14,360	8,350	*10,390	5,570	*6,500	4,060	*5,820	4,030	25.1 ft
	-1.5 m kg	-	-	*7 460	7 060	*6 040	3 780	*4 310	2 530	-	-	*2 910	2 000	7.2 m
	-5 ft lb	-	-	*17,150	15,170	*13,070	8,150	*9,260	5,460	-	-	*6,410	4,410	23.5 ft
	-3.0 m kg	-	-	*6 170	*6 170	*4 530	3 800	*2 830	2 570	-	-	*2 260	*2 260	6.3 m
	-10 ft lb	-	-	*13,260	*13,260	*9,670	8,210	*5,710	5,560	-	-	*4,920	*4,920	20.6 ft

Notes: 1. Machine in "Fine Mode-F" (Power Boost) for lifting capacities. 2. The above loads are in compliance with SAE J1097 and ISO 10567 Hydraulic Excavator Lifting Capacity Standards.

3. Rated loads do not exceed 87% of hydraulic lifting capacity or 75% of tipping load. 4. Rated loads marked with an asterisk (*) are limited by hydraulic capacity rather than tipping load.

LIFTING CAPACITY ECR235EL

Lifting capacity at the arm end without bucket.

For lifting capacity including bucket, simply subtract actual weight of the direct fit bucket or the bucket with quick coupler from the following values.

	Lifting hook related to ground level	1.5 m, 5 ft		3.0 m, 10 ft		4.5 m, 15 ft		6.0 m, 20 ft		7.5 m, 25 ft		Max. Reach	
		Along UC	Across UC	Along UC	Across UC	Along UC	Across UC	Along UC	Across UC	Along UC	Across UC	Along UC	Across UC
Boom: 5.7 m, 18' 8" Arm: 2.5 m, 8' 2" Shoe: 600 mm, 24" CWT: 6 200 kg, 13,669 lb	9 m kg	-	-	*8 380	*8 380	-	-	-	-	-	-	*8 380	*8 380
	30 ft lb	-	-	-	-	-	-	-	-	-	-	-	-
	7.5 m kg	-	-	-	-	*6 890	*6 890	-	-	-	-	*6 680	6 240
	25 ft lb	-	-	-	-	*15,310	*15,310	-	-	-	-	*14,870	14,320
	6 m kg	-	-	-	-	*7 210	*7 210	*6 880	5 370	-	-	*6 230	4 430
	20 ft lb	-	-	-	-	*15,730	*15,730	*15,140	11,540	-	-	*13,780	9,920
	4.5 m kg	-	-	*11 790	*11 790	*8 700	8 140	*7 430	5 210	-	-	5 800	3 660
	15 ft lb	-	-	*25,070	*25,070	*18,800	17,560	*16,200	11,230	-	-	12,880	8,130
	3 m kg	-	-	-	-	*10 880	7 550	8 030	4 970	5 670	3 550	5 260	3 290
	10 ft lb	-	-	-	-	*23,450	16,320	17,300	10,720	12,220	7,660	11,620	7,280
	1.5 m kg	-	-	-	-	12 280	7 050	7 760	4 730	5 550	3 440	5 070	3 150
	5 ft lb	-	-	-	-	26,370	15,230	16,720	10,200	11,970	7,430	11,190	6,950
	0 m kg	-	-	-	-	11 980	6 810	7 580	4 560	5 470	3 360	5 190	3 200
	0 ft lb	-	-	-	-	25,720	14,680	16,320	9,850	11,790	7,260	11,460	7,070
	-1.5 m kg	-	-	*11 650	*11 650	11 920	6 760	7 510	4 500	-	-	5 700	3 490
	-5 ft lb	-	-	*26,580	*26,580	25,570	14,560	16,170	9,720	-	-	12,600	7,720
	-3.0 m kg	-	-	*15 910	13 350	*11 700	6 840	7 580	4 560	-	-	6 960	4 230
	-10 ft lb	-	-	*34,520	28,600	*25,290	14,750	16,340	9,860	-	-	15,490	9,410
	-4.5 m kg	-	-	*11 740	*11 740	*8 570	7 110	-	-	-	-	*7 760	6 380
	-15 ft lb	-	-	*25,040	*25,040	*18,000	15,370	-	-	-	-	*17,040	14,530
Boom: 5.7 m, 18' 8" Arm: 2.9 m, 9' 6" Shoe: 600 mm, 24" CWT: 6 200 kg, 13,669 lb	9 m kg	-	-	-	-	-	-	-	-	-	-	*5 830	*5 830
	30 ft lb	-	-	-	-	-	-	-	-	-	-	*13,290	*13,290
	7.5 m kg	-	-	-	-	*6 150	*6 150	*4 920	*4 920	-	-	*4 830	*4 830
	25 ft lb	-	-	-	-	*13,650	*13,650	-	-	-	-	*10,750	*10,750
	6 m kg	-	-	-	-	*6 530	*6 530	*6 380	5 430	-	-	*4 530	4 000
	20 ft lb	-	-	-	-	*14,270	*14,270	*14,020	11,680	-	-	*10,010	8,960
	4.5 m kg	-	-	*10 230	*10 230	*8 010	*8 010	*7 000	5 260	5 810	3 680	*4 490	3 770
	15 ft lb	-	-	*21,800	*21,800	*17,330	*17,330	*15,250	11,340	*12,460	7,900	*9,900	7,480
	3 m kg	-	-	-	-	*10 230	7 670	*8 000	5 000	5 690	3 570	*4 650	3 050
	10 ft lb	-	-	-	-	*22,050	16,570	*17,370	10,800	12,260	7,690	*10,220	6,750
	1.5 m kg	-	-	-	-	*12 250	7 130	7 790	4 740	5 550	3 440	4 720	2 930
	5 ft lb	-	-	-	-	*26,460	15,380	16,770	10,240	11,970	7,420	10,410	6,460
	0 m kg	-	-	*6 180	*6 180	11 990	6 810	7 570	4 550	5 450	3 340	4 810	2 960
	0 ft lb	-	-	*14,270	*14,270	25,740	14,690	16,310	9,830	11,740	7,210	10,620	6,540
	-1.5 m kg	*6 750	*6 750	*10 980	*10 980	11 870	6 710	7 470	4 470	5 400	3 300	*5 220	3 200
	-5 ft lb	*15,120	*15,120	*24,960	*24,960	25,470	14,460	16,090	9,640	11,660	7,140	11,540	7,070
	-3.0 m kg	*11 760	*11 760	*17 000	13 180	11 930	6 760	7 500	4 490	-	-	6 200	3 780
	-10 ft lb	*26,420	*26,420	*36,850	28,250	25,600	14,570	16,160	9,690	-	-	13,780	8,390
	-4.5 m kg	-	-	*13 310	*13 310	*9 670	6 960	-	-	-	-	*7 590	5 280
	-15 ft lb	-	-	*28,510	*28,510	*20,590	15,040	-	-	-	-	*16,710	11,940
Boom: 5.7 m, 18' 8" Arm: 2.5 m, 8' 2" Shoe: 600 mm, 24" CWT: 6 200 kg, 13,669 lb Dozer blade down	9 m kg	-	-	*8 380	*8 380	-	-	-	-	-	-	*8 380	*8 380
	30 ft lb	-	-	-	-	-	-	-	-	-	-	-	-
	7.5 m kg	-	-	-	-	*6 890	*6 890	-	-	-	-	*6 680	*6 680
	25 ft lb	-	-	-	-	*15,310	*15,310	-	-	-	-	*14,870	*14,870
	6 m kg	-	-	-	-	*7 210	*7 210	*6 880	5 940	-	-	*6 230	4 920
	20 ft lb	-	-	-	-	*15,730	*15,730	*15,140	12,780	-	-	*13,780	11,020
	4.5 m kg	-	-	*11 790	*11 790	*8 700	*8 700	*7 430	5 790	-	-	*6 200	4 080
	15 ft lb	-	-	*25,070	*25,070	*18,800	*18,800	*16,200	12,480	-	-	*13,670	9,070
	3 m kg	-	-	-	-	*10 880	8 440	*8 380	5 540	*7 220	3 980	*6 460	3 690
	10 ft lb	-	-	-	-	*23,450	18,230	*18,180	11,960	*15,770	8,570	*14,200	8,150
	1.5 m kg	-	-	-	-	*12 700	7 940	*9 290	5 300	*7 610	3 860	*7 010	3 540
	5 ft lb	-	-	-	-	*27,450	17,130	*20,150	11,430	*16,550	8,340	*15,420	7,810
	0 m kg	-	-	-	-	*13 390	7 690	*9 820	5 130	*7 790	3 780	*7 490	3 600
	0 ft lb	-	-	-	-	*29,020	16,570	*21,300	11,080	*16,890	8,170	*16,510	7,950
	-1.5 m kg	-	-	*11 650	*11 650	*13 040	7 630	*9 720	5 070	-	-	*7 740	3 930
	-5 ft lb	-	-	*26,580	*26,580	*28,290	16,450	*21,060	10,940	-	-	*17,090	8,690
	-3.0 m kg	-	-	*15 910	15 230	*11 700	7 720	*8 660	5 130	-	-	*7 950	4 750
	-10 ft lb	-	-	*34,520	32,620	*25,290	16,630	*18,550	11,090	-	-	*17,530	10,570
	-4.5 m kg	-	-	*11 740	*11 740	*8 570	7 990	-	-	-	-	*7 760	7 160
	-15 ft lb	-	-	*25,040	*25,040	*18,000	17,260	-	-	-	-	*17,040	16,310

Notes: 1. Machine in "Fine Mode-F" (Power Boost) for lifting capacities. 2. The above loads are in compliance with SAE J1097 and ISO 10567 Hydraulic Excavator Lifting Capacity Standards.

3. Rated loads do not exceed 87% of hydraulic lifting capacity or 75% of tipping load. 4. Rated loads marked with an asterisk (*) are limited by hydraulic capacity rather than tipping load.

Specifications

LIFTING CAPACITY ECR235EL

Lifting capacity at the arm end without bucket.

For lifting capacity including bucket, simply subtract actual weight of the direct fit bucket or the bucket with quick coupler from the following values.

	Lifting hook related to ground level	1.5 m, 5 ft		3.0 m, 10 ft		4.5 m, 15 ft		6.0 m, 20 ft		7.5 m, 25 ft		Max. Reach		
		Along UC	Across UC	Along UC	Across UC	Along UC	Across UC	Along UC	Across UC	Along UC	Across UC	Along UC	Across UC	
Boom: 5.7 m, 18' 8" Arm: 2.9 m, 9' 6" Shoe: 600 mm, 24" CWT: 6 200 kg, 13,669 lb Dozer blade down	9 m kg	-	-	-	-	-	-	-	-	-	-	*5 830	*5 830	4.0 m
	30 ft lb	-	-	-	-	-	-	-	-	-	-	*13,290	*13,290	12.3 ft
	7.5 m kg	-	-	-	-	*6 150	*6 150	*4 920	*4 920	-	-	*4 830	*4 830	6.0 m
	25 ft lb	-	-	-	-	*13,650	*13,650	-	-	-	-	*10,750	*10,750	19.4 ft
	6 m kg	-	-	-	-	*6 530	*6 530	*6 380	6 010	-	-	*4 530	4 450	7.2 m
	20 ft lb	-	-	-	-	*14,270	*14,270	*14,020	12,930	-	-	*10,010	9,960	23.4 ft
	4.5 m kg	-	-	*10 230	*10 230	*8 010	*8 010	*7 000	5 840	*6 170	4 100	*4 490	3 770	7.9 m
	15 ft lb	-	-	*21,800	*21,800	*17,330	*17,330	*15,250	12,590	*12,460	8,820	*9,900	8,360	25.8 ft
	3 m kg	-	-	-	-	*10 230	8 570	*8 000	5 580	*6 940	3 990	*4 650	3 420	8.3 m
	10 ft lb	-	-	-	-	*22,050	18,490	*17,370	12,040	*15,140	8,600	*10,220	7,570	27.1 ft
	1.5 m kg	-	-	-	-	*12 250	8 010	*9 020	5 320	*7 410	3 860	*4 990	3 290	8.4 m
	5 ft lb	-	-	-	-	*26,460	17,280	*19,550	11,470	*16,130	8,330	*10,990	7,260	27.4 ft
	0 m kg	-	-	*6 180	*6 180	*13 250	7 690	*9 680	5 120	*7 720	3 760	*5 610	3 340	8.2 m
	0 ft lb	-	-	*14,270	*14,270	*28,700	16,580	*21,000	11,060	*16,750	8,120	*12,380	7,370	26.8 ft
	-1.5 m kg	*6 750	*6 750	*10 980	*10 980	*13 190	7 590	*9 770	5 030	*7 580	3 720	*6 740	3 610	7.7 m
	-5 ft lb	*15,120	*15,120	*24,960	*24,960	*28,610	16,350	*21,180	10,860	*16,330	8,050	*14,900	7,970	25.2 ft
	-3.0 m kg	*11 760	*11 760	*17 000	15 060	*12 150	7 640	*9 040	5 060	-	-	*7 560	4 250	6.8 m
	-10 ft lb	*26,420	*26,420	*36,850	32,250	*26,290	16,450	*19,470	10,920	-	-	*16,680	9,440	22.3 ft
	-4.5 m kg	-	-	*13 310	*13 310	*9 670	7 840	-	-	-	-	*7 590	5 940	5.5 m
	-15 ft lb	-	-	*28,510	*28,510	*20,590	16,930	-	-	-	-	*16,710	13,410	17.7 ft
Boom: 5.57 m, 18' 3" 2-piece Arm: 2.5 m, 8' 2" Shoe: 600 mm, 24" CWT: 6 200 kg, 13,669 lb	9 m kg	-	-	*9 840	*9 840	-	-	-	-	-	-	*8 670	*8 670	3.6 m
	30 ft lb	-	-	*21,210	*21,210	-	-	-	-	-	-	*20,010	*20,010	10.7 ft
	7.5 m kg	-	-	*8 290	*8 290	*8 730	8 620	-	-	-	-	*6 830	5 680	5.7 m
	25 ft lb	-	-	*18,600	*18,600	*19,240	18,490	-	-	-	-	*15,220	13,000	18.4 ft
	6 m kg	-	-	*7 680	*7 680	*8 800	8 480	8 460	5 290	-	-	*6 280	4 120	6.9 m
	20 ft lb	-	-	*16,960	*16,960	*19,360	18,250	18,170	11,390	-	-	*13,880	9,230	22.6 ft
	4.5 m kg	-	-	-	-	*11 340	8 030	8 270	5 130	5 740	3 580	5 530	3 440	7.7 m
	15 ft lb	-	-	*34,990	34,090	*24,540	17,320	17,800	11,050	12,330	7,680	12,260	7,630	25.1 ft
	3 m kg	-	-	-	-	*12 760	7 400	7 980	4 870	5 640	3 480	5 040	3 110	8.1 m
	10 ft lb	-	-	-	-	27,480	16,000	17,190	10,510	12,140	7,510	11,130	6,870	26.4 ft
	1.5 m kg	-	-	-	-	12 180	6 900	7 710	4 630	5 520	3 380	4 880	2 990	8.1 m
	5 ft lb	-	-	-	-	26,170	14,900	16,600	9,990	11,900	7,280	10,770	6,600	26.7 ft
	0 m kg	-	-	-	-	11 920	6 690	7 540	4 480	5 440	3 310	5 010	3 060	8.0 m
	0 ft lb	-	-	-	-	25,590	14,420	16,230	9,660	11,740	7,140	11,050	6,740	26.1 ft
	-1.5 m kg	-	-	*9 780	*9 780	*10 700	6 680	7 500	4 440	-	-	5 500	3 340	7.5 m
	-5 ft lb	-	-	*22,430	*22,430	*23,260	14,390	16,150	9,590	-	-	12,150	7,390	24.4 ft
	-3.0 m kg	-	-	-	-	*7 710	6 810	*5 820	4 530	-	-	-	-	6.6 m
	-10 ft lb	-	-	-	-	*16,590	14,690	*12,220	9,810	-	-	-	-	21.5 ft
Boom: 5.57 m, 18' 3" 2-piece Arm: 2.5 m, 8' 2" Shoe: 600 mm, 24" CWT: 6 200 kg, 13,669 lb	9 m kg	-	-	*7 890	*7 890	-	-	-	-	-	-	*5 990	*5 990	4.4 m
	30 ft lb	-	-	*17,480	*17,480	-	-	-	-	-	-	*13,660	*13,660	13.7 ft
	7.5 m kg	-	-	-	-	*7 010	*7 010	*5 930	5 360	-	-	*4 920	*4 920	6.3 m
	25 ft lb	-	-	-	-	*15,500	*15,500	*11,710	11,460	-	-	*10,960	*10,960	20.2 ft
	6 m kg	-	-	*6 060	*6 060	*7 010	*7 010	*7 170	5 360	-	-	*4 550	3 730	7.4 m
	20 ft lb	-	-	*13,420	*13,420	*15,460	*15,460	*15,600	11,540	-	-	*10,060	8,330	24.1 ft
	4.5 m kg	-	-	*9 910	*9 910	*9 130	8 160	8 340	5 180	5 780	3 610	*4 440	3 160	8.1 m
	15 ft lb	-	-	*20,360	*20,360	*19,600	17,610	17,940	11,170	12,430	7,760	*9,800	7,020	26.5 ft
	3 m kg	-	-	-	-	*12 360	7 530	8 030	4 910	5 660	3 500	*4 520	2 880	8.5 m
	10 ft lb	-	-	-	-	*26,720	16,260	17,290	10,590	12,180	7,530	*9,950	6,360	27.7 ft
	1.5 m kg	-	-	-	-	12 270	6 970	7 730	4 640	5 520	3 370	4 540	2 770	8.5 m
	5 ft lb	-	-	-	-	26,360	15,050	16,650	10,020	11,890	7,270	10,010	6,120	28.0 ft
	0 m kg	-	-	-	-	11 920	6 680	7 530	4 460	5 420	3 280	4 640	2 820	8.4 m
	0 ft lb	-	-	-	-	25,590	14,410	16,210	9,630	11,680	7,080	10,240	6,230	27.4 ft
	-1.5 m kg	-	-	*9 410	*9 410	*11 330	6 620	7 450	4 400	5 400	3 260	5 040	3 060	7.9 m
	-5 ft lb	-	-	*21,470	*21,470	*24,610	14,270	16,050	9,490	11,650	7,050	11,130	6,760	25.9 ft
	-3.0 m kg	-	-	-	-	*8 660	6 720	*6 620	4 450	-	-	*4 660	3 600	7.1 m
	-10 ft lb	-	-	-	-	*18,670	14,470	*14,080	9,620	-	-	*10,180	8,010	23.1 ft
Boom: 5.57 m, 18' 3" 2-piece Arm: 2.5 m, 8' 2" Shoe: 600 mm, 24" CWT: 6 200 kg, 13,669 lb Dozer blade down	9 m kg	-	-	*9 840	*9 840	-	-	-	-	-	-	*8 670	*8 670	3.6 m
	30 ft lb	-	-	*21,210	*21,210	-	-	-	-	-	-	*20,010	*20,010	10.7 ft
	7.5 m kg	-	-	*8 290	*8 290	*8 730	*8 730	-	-	-	-	*6 830	6 310	5.7 m
	25 ft lb	-	-	*18,600	*18,600	*19,240	*19,240	-	-	-	-	*15,220	14,420	18.4 ft
	6 m kg	-	-	*7 680	*7 680	*8 800	*8 800	*8 660	5 880	-	-	*6 280	4 590	6.9 m
	20 ft lb	-	-	*16,960	*16,960	*19,360	*19,360	*18,910	12,640	-	-	*13,880	10,290	22.6 ft
	4.5 m kg	-	-	-	-	*11 340	8 930	*9 040	5 710	*7 290	4 000	*6 140	3 850	7.7 m
	15 ft lb	-	-	-	-	*24,540	19,270	*19,650	12,300	*13,970	8,600	*13,550	8,550	25.1 ft
	3 m kg	-	-	-	-	*12 760	8 300	*9 570	5 450	*7 760	3 910	*6 280	3 500	8.1 m
	10 ft lb	-	-	-	-	*27,590	17,920	*20,770	11,750	*16,850	8,420	*13,830	7,730	26.4 ft
	1.5 m kg	-	-	-	-	*13 350	7 790	*9 840	5 200	*7 710	3 800	*6 680	3 370	8.1 m
	5 ft lb	-	-	-	-	*28,950	16,810	*21,340	11,230	*16,680	8,200	*14,690	7,440	26.7 ft
	0 m kg	-	-	-	-	*12 570	7 570	*9 490	5 050	*7 210	3 730	*6 450	3 450	8.0 m
	0 ft lb	-	-	-	-	*27,350	16,320	*20,580	10,900	*15,500	8,050	*14,220	7,610	26.1 ft
	-1.5 m kg	-	-	*9 780	*9 780	*10 700	7 560	*8 290	5 010	-	-	*5 810	3 770	7.5 m
	-5 ft lb	-	-	*22,430	*22,430	*23,260	16,290	*17,900	10,820	-	-	*12,780	8,330	24.4 ft
	-3.0 m kg	-	-	-	-	*7 710	7 700	*5 820	5 110	-	-	-	-	6.6 m
	-10 ft lb	-	-	-	-	*16,590	16,590	*12,220	11,050	-	-	-	-	21.5 ft

Notes: 1. Machine in "Fine Mode-F" (Power Boost) for lifting capacities. 2. The above loads are in compliance with SAE J1097 and ISO 10567 Hydraulic Excavator Lifting Capacity Standards.

3. Rated loads do not exceed 87% of hydraulic lifting capacity or 75% of tipping load. 4. Rated loads marked with an asterisk (*) are limited by hydraulic capacity rather than tipping load.

LIFTING CAPACITY ECR235EL

Lifting capacity at the arm end without bucket.

For lifting capacity including bucket, simply subtract actual weight of the direct fit bucket or the bucket with quick coupler from the following values.

	Lifting hook related to ground level	1.5 m, 5 ft		3.0 m, 10 ft		4.5 m, 15 ft		6.0 m, 20 ft		7.5 m, 25 ft		Max. Reach	
		Along UC	Across UC	Along UC	Across UC	Along UC	Across UC	Along UC	Across UC	Along UC	Across UC	Along UC	Across UC
Boom: 5.57 m, 18' 3" 2-piece Arm: 2.9 m, 9' 6" Shoe: 600 mm, 24" CWT: 6 200 kg, 13,669 lb Dozer blade down	9 m kg	-	-	*7 890	*7 890	-	-	-	-	-	-	*5 990	*5 990 4.4 m
	30 ft lb	-	-	*17,480	*17,480	-	-	-	-	-	-	*13,660	*13,660 13.7 ft
	7.5 m kg	-	-	-	-	*7 010	*7 010	*5 930	*5 930	-	-	*4 920	*4 920 6.3 m
	25 ft lb	-	-	-	-	*15,500	*15,500	*11,710	*11,710	-	-	*10,960	*10,960 20.2 ft
	6 m kg	-	-	*6 060	*6 060	*7 010	*7 010	*7 170	5 950	-	-	*4 550	4 160 7.4 m
	20 ft lb	-	-	*13,420	*13,420	*15,460	*15,460	*15,600	12,800	-	-	*10,060	9,300 24.1 ft
	4.5 m kg	-	-	*9 910	*9 910	*9 130	9 070	*8 480	5 760	*6 780	4 040	*4 440	3 550 8.1 m
	15 ft lb	-	-	*20,360	*20,360	*19,600	19,560	*18,370	12,420	*14,110	8,680	*9,800	7,870 26.5 ft
	3 m kg	-	-	-	-	*12 360	8 430	*9 360	5 490	*7 660	3 920	*4 520	3 240 8.5 m
	10 ft lb	-	-	-	-	*26,720	18,190	*20,310	11,840	*16,630	8,450	*9,950	7,160 27.7 ft
	1.5 m kg	-	-	-	-	*13 270	7 860	*9 770	5 220	*7 710	3 790	*4 760	3 130 8.5 m
	5 ft lb	-	-	-	-	*28,760	16,960	*21,180	11,270	*16,710	8,180	*10,490	6,910 28.0 ft
	0 m kg	-	-	-	-	*12 890	7 570	*9 610	5 040	*7 400	3 700	*5 240	3 190 8.4 m
	0 ft lb	-	-	-	-	*28,000	16,310	*20,840	10,870	*15,970	7,990	*11,530	7,040 27.4 ft
	-1.5 m kg	-	-	*9 410	*9 410	*11 330	7 500	*8 660	4 970	*6 370	3 680	*5 610	3 450 7.9 m
	-5 ft lb	-	-	*21,470	*21,470	*24,610	16,160	*18,720	10,720	*13,530	7,960	*12,350	7,630 25.9 ft
	-3.0 m kg	-	-	-	-	*8 660	7 600	*6 620	5 020	-	-	*4 660	4 060 7.1 m
	-10 ft lb	-	-	-	-	*18,670	16,370	*14,080	10,860	-	-	*10,180	9,020 23.1 ft
Boom: 5.7 m, 18' 8" Arm: 2.5 m, 8' 2" Shoe: 700 mm, 28" CWT: 6 200 kg, 13,669 lb	9 m kg	-	-	*8 380	*8 380	-	-	-	-	-	-	*8 380	*8 380 3.1 m
	30 ft lb	-	-	-	-	-	-	-	-	-	-	-	-
	7.5 m kg	-	-	-	-	*6 890	*6 890	-	-	-	-	*6 680	6 350 5.5 m
	25 ft lb	-	-	-	-	*15,310	*15,310	-	-	-	-	*14,870	14,560 17.5 ft
	6 m kg	-	-	-	-	*7 210	*7 210	*6 880	5 460	-	-	*6 230	4 510 6.7 m
	20 ft lb	-	-	-	-	*15,730	*15,730	*15,140	11,740	-	-	*13,780	10,110 21.9 ft
	4.5 m kg	-	-	*11 790	*11 790	*8 700	8 280	*7 430	5 310	-	-	5 920	3 730 7.5 m
	15 ft lb	-	-	*25,070	*25,070	*18,800	17,860	*16,200	11,440	-	-	13,140	8,290 24.4 ft
	3 m kg	-	-	-	-	*10 880	7 690	8 190	5 060	5 790	3 630	5 370	3 360 7.9 m
	10 ft lb	-	-	-	-	*23,450	16,620	17,640	10,920	12,470	7,810	11,860	7,430 25.8 ft
	1.5 m kg	-	-	-	-	12 520	7 190	7 920	4 820	5 670	3 520	5 180	3 220 8.0 m
	5 ft lb	-	-	-	-	26,910	15,530	17,060	10,410	12,220	7,580	11,430	7,100 26.1 ft
	0 m kg	-	-	-	-	12 230	6 950	7 740	4 660	5 580	3 440	5 310	3 270 7.8 m
	0 ft lb	-	-	-	-	26,250	14,980	16,660	10,050	12,040	7,420	11,700	7,220 25.5 ft
	-1.5 m kg	-	-	*11 650	*11 650	12 170	6 900	7 670	4 600	-	-	5 820	3 570 7.3 m
	-5 ft lb	-	-	*26,580	*26,580	26,100	14,860	16,520	9,920	-	-	12,870	7,890 23.8 ft
	-3.0 m kg	-	-	*15 910	13 610	*11 700	6 980	7 740	4 660	-	-	7 110	4 320 6.4 m
	-10 ft lb	-	-	*34,520	29,160	*25,290	15,050	16,680	10,070	-	-	15,820	9,600 20.8 ft
	-4.5 m kg	-	-	*11 740	*11 740	*8 570	7 250	-	-	-	-	*7 760	6 510 4.9 m
	-15 ft lb	-	-	*25,040	*25,040	*18,000	15,670	-	-	-	-	*17,040	14,810 15.6 ft
Boom: 5.7 m, 18' 8" Arm: 2.9 m, 9' 6" Shoe: 700 mm, 28" CWT: 6 200 kg, 13,669 lb	9 m kg	-	-	-	-	-	-	-	-	-	-	*5 830	*5 830 4.0 m
	30 ft lb	-	-	-	-	-	-	-	-	-	-	*13,290	*13,290 12.3 ft
	7.5 m kg	-	-	-	-	*6 150	*6 150	*4 920	*4 920	-	-	*4 830	*4 830 6.0 m
	25 ft lb	-	-	-	-	*13,650	*13,650	-	-	-	-	*10,750	*10,750 19.4 ft
	6 m kg	-	-	-	-	*6 530	*6 530	*6 380	5 520	-	-	*4 530	4 080 7.2 m
	20 ft lb	-	-	-	-	*14,270	*14,270	*14,020	11,890	-	-	*10,010	9,130 23.4 ft
	4.5 m kg	-	-	*10 230	*10 230	*8 010	*8 010	*7 000	5 360	5 930	3 750	*4 490	3 440 7.9 m
	15 ft lb	-	-	*21,800	*21,800	*17,330	*17,330	*15,250	11,550	*12,460	8,060	*9,900	7,630 25.8 ft
	3 m kg	-	-	-	-	*10 230	7 810	*8 000	5 100	5 810	3 640	*4 650	3 120 8.3 m
	10 ft lb	-	-	-	-	*22,050	16,870	*17,370	11,010	12,510	7,840	*10,220	6,890 27.1 ft
	1.5 m kg	-	-	-	-	*12 250	7 260	7 950	4 840	5 670	3 510	4 820	2 990 8.4 m
	5 ft lb	-	-	-	-	*26,460	15,680	17,120	10,450	12,220	7,580	10,630	6,600 27.4 ft
	0 m kg	-	-	*6 180	*6 180	12 240	6 950	7 730	4 650	5 560	3 410	4 920	3 030 8.2 m
	0 ft lb	-	-	*14,270	*14,270	26,280	14,990	16,650	10,030	11,990	7,370	10,850	6,680 26.8 ft
	-1.5 m kg	*6 750	*6 750	*10 980	*10 980	12 120	6 850	7 630	4 560	5 520	3 380	5 340	3 270 7.7 m
	-5 ft lb	*15,120	*15,120	*24,960	*24,960	26,010	14,760	16,440	9,840	11,910	7,300	11,790	7,230 25.2 ft
	-3.0 m kg	*11 760	*11 760	*17 000	13 440	*12 150	6 900	7 660	4 580	-	-	6 330	3 860 6.8 m
	-10 ft lb	*26,420	*26,420	*36,850	28,810	26,130	14,870	16,500	9,900	-	-	14,080	8,570 22.3 ft
	-4.5 m kg	-	-	*13 310	*13 310	*9 670	7 100	-	-	-	-	*7 590	5 390 5.5 m
	-15 ft lb	-	-	*28,510	*28,510	*20,590	15,340	-	-	-	-	*16,710	12,180 17.7 ft

Notes: 1. Machine in "Fine Mode-F" (Power Boost) for lifting capacities. 2. The above loads are in compliance with SAE J1097 and ISO 10567 Hydraulic Excavator Lifting Capacity Standards.

3. Rated loads do not exceed 87% of hydraulic lifting capacity or 75% of tipping load. 4. Rated loads marked with an asterisk (*) are limited by hydraulic capacity rather than tipping load.

Specifications

LIFTING CAPACITY ECR235EL

Lifting capacity at the arm end without bucket.

For lifting capacity including bucket, simply subtract actual weight of the direct fit bucket or the bucket with quick coupler from the following values.

	Lifting hook related to ground level	1.5 m, 5 ft		3.0 m, 10 ft		4.5 m, 15 ft		6.0 m, 20 ft		7.5 m, 25 ft		Max. Reach		
		Along UC	Across UC	Along UC	Across UC	Along UC	Across UC	Along UC	Across UC	Along UC	Across UC	Along UC	Across UC	
Boom: 5.7 m, 18' 8" Arm: 2.5 m, 8' 2" Shoe: 700 mm, 28" CWT: 6 200 kg, 13,669 lb Dozer blade down	9 m kg	-	-	*8 380	*8 380	-	-	-	-	-	-	*8 380	*8 380	3.1 m
	30 ft lb	-	-	-	-	-	-	-	-	-	-	-	-	-
	7.5 m kg	-	-	-	-	*6 890	*6 890	-	-	-	-	*6 680	*6 680	5.5 m
	25 ft lb	-	-	-	-	*15,310	*15,310	-	-	-	-	*14,870	*14,870	17.5 ft
	6 m kg	-	-	-	-	*7 210	*7 210	*6 880	6 150	-	-	*6 230	5 090	6.7 m
	20 ft lb	-	-	-	-	*15,730	*15,730	*15,140	13,230	-	-	*13,780	11,410	21.9 ft
	4.5 m kg	-	-	*11 790	*11 790	*8 700	*8 700	*7 430	5 990	-	-	*6 200	4 240	7.5 m
	15 ft lb	-	-	*25,070	*25,070	*18,800	*18,800	*16,200	12,920	-	-	*13,670	9,410	24.4 ft
	3 m kg	-	-	-	-	*10 880	8 770	*8 380	5 750	*7 220	4 130	*6 460	3 830	7.9 m
	10 ft lb	-	-	-	-	*23,450	18,920	*18,180	12,400	*15,770	8,890	*14,200	8,460	25.8 ft
	1.5 m kg	-	-	-	-	*12 700	8 260	*9 290	5 500	*7 610	4 020	*7 010	3 680	8.0 m
	5 ft lb	-	-	-	-	*27,450	17,810	*20,150	11,880	*16,550	8,660	*15,420	8,120	26.1 ft
	0 m kg	-	-	-	-	*13 390	8 010	*9 820	5 340	*7 790	3 930	*7 490	3 750	7.8 m
	0 ft lb	-	-	-	-	*29,020	17,250	*21,300	11,520	*16,890	8,490	*16,510	8,270	25.5 ft
	-1.5 m kg	-	-	*11 650	*11 650	*13 040	7 950	*9 720	5 270	-	-	*7 740	4 090	7.3 m
	-5 ft lb	-	-	*26,580	*26,580	*28,290	17,130	*21,060	11,380	-	-	*17,090	9,040	23.8 ft
	-3.0 m kg	-	-	*15 910	*15 910	*11 700	8 040	*8 660	5 330	-	-	*7 950	4 940	6.4 m
	-10 ft lb	-	-	*34,520	34,090	*25,290	17,320	*18,550	11,530	-	-	*17,530	10,990	20.8 ft
	-4.5 m kg	-	-	*11 740	*11 740	*8 570	8 310	-	-	-	-	*7 760	7 450	4.9 m
	-15 ft lb	-	-	*25,040	*25,040	*18,000	17,950	-	-	-	-	*17,040	16,950	15.6 ft
Boom: 5.7 m, 18' 8" Arm: 2.9 m, 9' 6" Shoe: 700 mm, 28" CWT: 6 200 kg, 13,669 lb Dozer blade down	9 m kg	-	-	-	-	-	-	-	-	-	-	*5 830	*5 830	4.0 m
	30 ft lb	-	-	-	-	-	-	-	-	-	-	*13,290	*13,290	12.3 ft
	7.5 m kg	-	-	-	-	*6 150	*6 150	*4 920	*4 920	-	-	*4 830	*4 830	6.0 m
	25 ft lb	-	-	-	-	*13,650	*13,650	-	-	-	-	*10,750	*10,750	19.4 ft
	6 m kg	-	-	-	-	*6 530	*6 530	*6 380	6 220	-	-	*4 530	*4 530	7.2 m
	20 ft lb	-	-	-	-	*14,270	*14,270	*14,020	13,380	-	-	*10,010	*10,010	23.4 ft
	4.5 m kg	-	-	*10 230	*10 230	*8 010	*8 010	*7 000	6 050	*6 170	4 250	*4 490	3 910	7.9 m
	15 ft lb	-	-	*21,800	*21,800	*17,330	*17,330	*15,250	13,030	*12,460	9,140	*9,900	8,670	25.8 ft
	3 m kg	-	-	-	-	*10 230	8 890	*8 000	5 790	*6,940	4 140	*4 650	3 560	8.3 m
	10 ft lb	-	-	-	-	*22,050	19,180	*17,370	12,480	*15,140	8,920	*10,220	7,860	27.1 ft
	1.5 m kg	-	-	-	-	*12 250	8 330	*9 020	5 520	*7 410	4 010	*4 990	3 420	8.4 m
	5 ft lb	-	-	-	-	*26,460	17,970	*19,550	11,920	*16,130	8,650	*10,990	7,550	27.4 ft
	0 m kg	-	-	*6 180	*6 180	*13 250	8 010	*9 680	5 330	*7 720	3 910	*5 610	3 470	8.2 m
	0 ft lb	-	-	*14,270	*14,270	*28,700	17,260	*21,000	11,500	*16,750	8,440	*12,380	7,660	26.8 ft
	-1.5 m kg	*6 750	*6 750	*10 980	*10 980	*13 190	7 910	*9 770	5 240	*7 580	3 870	*6 740	3 750	7.7 m
	-5 ft lb	*15,120	*15,120	*24,960	*24,960	*28,610	17,930	*21,180	11,300	*16,330	8,370	*14,900	8,290	25.2 ft
	-3.0 m kg	*11 760	*11 760	*17 000	15 750	*12 150	7 950	*9 040	5 260	-	-	*7 560	4 420	6.8 m
	-10 ft lb	*26,420	*26,420	*36,850	33,720	*26,290	17,140	*19,470	11,360	-	-	*16,680	9,820	22.3 ft
	-4.5 m kg	-	-	*13 310	*13 310	*9 670	8 160	-	-	-	-	*7 590	6 170	5.5 m
	-15 ft lb	-	-	*28,510	*28,510	*20,590	17,620	-	-	-	-	*16,710	13,940	17.7 ft
Boom: 5.57 m, 18' 3" 2-piece Arm: 2.5 m, 8' 2" Shoe: 700 mm, 28" CWT: 6 200 kg, 13,669 lb	9 m kg	-	-	*9 840	*9 840	-	-	-	-	-	-	*8 670	*8 670	3.6 m
	30 ft lb	-	-	*21,210	*21,210	-	-	-	-	-	-	*20,010	*20,010	10.7 ft
	7.5 m kg	-	-	*8 290	*8 290	*8 730	*8 730	-	-	-	-	*6 830	5 790	5.7 m
	25 ft lb	-	-	*18,600	*18,600	*19,240	18,790	-	-	-	-	*15,220	13,230	18.4 ft
	6 m kg	-	-	*7 680	*7 680	*8 800	8 620	8 620	5 390	-	-	*6 280	4 200	6.9 m
	20 ft lb	-	-	*16,960	*16,960	*19,360	18,550	18,520	11,590	-	-	*13,880	9,410	22.6 ft
	4.5 m kg	-	-	-	-	*11 340	8 170	8 430	5 220	5 860	3 650	5 640	3 510	7.7 m
	15 ft lb	-	-	-	-	*24,540	17,620	18,140	11,260	12,580	7,830	12,520	7,790	25.1 ft
	3 m kg	-	-	-	-	*12 760	7 540	8 140	4 960	5 760	3 560	5 140	3 170	8.1 m
	10 ft lb	-	-	-	-	*27,590	16,300	17,530	10,710	12,390	7,660	11,370	7,020	26.4 ft
	1.5 m kg	-	-	-	-	*12 430	7 040	7 870	4 720	5 640	3 450	4 990	3 060	8.1 m
	5 ft lb	-	-	-	-	26,700	15,200	16,940	10,200	12,150	7,440	11,000	6,750	26.7 ft
	0 m kg	-	-	-	-	*12 170	6 830	7 700	4 570	5 560	3 380	5 120	3 120	8.0 m
	0 ft lb	-	-	-	-	26,120	14,720	16,570	9,870	11,990	7,300	11,290	6,890	26.1 ft
	-1.5 m kg	-	-	*9 780	*9 780	*10 700	6 820	7 660	4 540	-	-	5 620	3 420	7.5 m
	-5 ft lb	-	-	*22,430	*22,430	*23,260	14,690	16,490	9,790	-	-	12,410	7,550	24.4 ft
	-3.0 m kg	-	-	-	-	*7 710	6 950	*5 820	4 630	-	-	-	-	6.6 m
	-10 ft lb	-	-	-	-	*16,590	14,990	*12,220	10,020	-	-	-	-	21.5 ft
Boom: 5.57 m, 18' 3" 2-piece Arm: 2.9 m, 9' 6" Shoe: 700 mm, 28" CWT: 6 200 kg, 13,669 lb	9 m kg	-	-	*7 890	*7 890	-	-	-	-	-	-	*5 990	*5 990	4.4 m
	30 ft lb	-	-	*17,480	*17,480	-	-	-	-	-	-	*13,660	*13,660	13.7 ft
	7.5 m kg	-	-	-	-	*7 010	*7 010	*5 930	5 460	-	-	*4 920	*4 920	6.3 m
	25 ft lb	-	-	-	-	*15,500	*15,500	*11,710	11,670	-	-	*10,960	*10,960	20.2 ft
	6 m kg	-	-	*6 060	*6 060	*7 010	*7 010	*7 170	5 460	-	-	*4 550	3 800	7.4 m
	20 ft lb	-	-	*13,420	*13,420	*15,460	*15,460	*15,600	11,740	-	-	*10,060	8,500	24.1 ft
	4.5 m kg	-	-	*9 910	*9 910	*9 130	8 300	*8 480	5 280	5 900	3 680	*4 440	3 230	8.1 m
	15 ft lb	-	-	*20,360	*20,360	*19,600	17,910	18,280	11,370	12,680	7,920	*9,800	7,160	26.5 ft
	3 m kg	-	-	-	-	*12 360	7 670	8 190	5 000	5 770	3 570	*4 520	2 940	8.5 m
	10 ft lb	-	-	-	-	*26,720	16,560	17,640	10,800	12,430	7,690	*9,950	6,500	27.7 ft
	1.5 m kg	-	-	-	-	*12 520	7 110	7 890	4 740	5 640	3 440	4 640	2 830	8.5 m
	5 ft lb	-	-	-	-	26,890	15,350	16,990	10,230	12,140	7,420	10,230	6,260	28.0 ft
	0 m kg	-	-	-	-	*12 170	6 820	7 690	4 560	5 530	3 350	4 740	2 890	8.4 m
	0 ft lb	-	-	-	-	26,120	14,710	16,550	9,840	11,930	7,230	10,460	6,370	27.4 ft
	-1.5 m kg	-	-	*9 410	*9 410	*11 330	6 760	7 610	4 490	5 510	3 330	5 150	3 120	7.9 m
	-5 ft lb	-	-	*21,470	*21,470	*24,610	14,570	16,390	9,690	11,900	7,200	11,370	6,910	25.9 ft
	-3.0 m kg	-	-	-	-	*8 660	6 860	*6 620	4 550	-	-	*4 660	3 680	7.1 m
	-10 ft lb	-	-	-	-	*18,670	14,770	*14,080	9,820	-	-	*10,180	8,180	23.1 ft

Notes: 1. Machine in "Fine Mode-F" (Power Boost) for lifting capacities. 2. The above loads are in compliance with SAE J1097 and ISO 10567 Hydraulic Excavator Lifting Capacity Standards.

3. Rated loads do not exceed 87% of hydraulic lifting capacity or 75% of tipping load. 4. Rated loads marked with an asterisk (*) are limited by hydraulic capacity rather than tipping load.

LIFTING CAPACITY ECR235EL

Lifting capacity at the arm end without bucket.

For lifting capacity including bucket, simply subtract actual weight of the direct fit bucket or the bucket with quick coupler from the following values.

	Lifting hook related to ground level	1.5 m, 5 ft		3.0 m, 10 ft		4.5 m, 15 ft		6.0 m, 20 ft		7.5 m, 25 ft		Max. Reach	
		Along UC	Across UC	Along UC	Across UC	Along UC	Across UC	Along UC	Across UC	Along UC	Across UC	Along UC	Across UC
Boom: 5.57 m, 18' 3" 2-piece Arm: 2.5 m, 8' 2" Shoe: 700 mm, 28" CWT: 6 200 kg, 13,669 lb Dozer blade down	9 m kg	-	-	*9 840	*9 840	-	-	-	-	-	-	*8 670	*8 670
	30 ft lb	-	-	*21,210	*21,210	-	-	-	-	-	-	*20,010	*20,010
	7.5 m kg	-	-	*8 290	*8 290	*8 730	*8 730	-	-	-	-	*6 830	*6 530
	25 ft lb	-	-	*18,600	*18,600	*19,240	*19,240	-	-	-	-	*15,220	*14,930
	6 m kg	-	-	*7 680	*7 680	*8 800	*8 800	*8 660	6 090	-	-	*6 280	4 760
	20 ft lb	-	-	*16,960	*16,960	*19,360	*19,360	*18,910	13,090	-	-	*13,880	10,670
	4.5 m kg	-	-	-	-	*11 340	9 260	*9 040	5 910	*7 290	4 150	*6 140	4 000
	15 ft lb	-	-	-	-	*24,540	19,970	*19,650	12,750	*13,970	8,930	*13,550	8,880
	3 m kg	-	-	-	-	*12 760	8 620	*9 570	5 650	*7 760	4 060	*6 280	3 630
	10 ft lb	-	-	-	-	*27,590	18,610	*20,770	12,200	*16,850	8,750	*13,830	8,030
	1.5 m kg	-	-	-	-	*13 350	8 110	*9 840	5 410	*7 710	3 950	*6 680	3 510
	5 ft lb	-	-	-	-	*28,950	17,500	*21,340	11,670	*16,680	8,530	*14,690	7,740
	0 m kg	-	-	-	-	*12 570	7 890	*9 490	5 260	*7 210	3 880	*6 450	3 590
	0 ft lb	-	-	-	-	*27,350	17,000	*20,580	11,340	*15,500	8,380	*14,220	7,910
	-1.5 m kg	-	-	*9 780	*9 780	*10 700	7 880	*8 290	5 220	-	-	*5 810	3 920
	-5 ft lb	-	-	*22,430	*22,430	*23,260	16,970	*17,900	11,270	-	-	*12,780	8,670
	-3.0 m kg	-	-	-	-	*7 710	*7 710	*5 820	5 310	-	-	-	-
	-10 ft lb	-	-	-	-	*16,590	*16,590	*12,220	11,490	-	-	-	-
Boom: 5.57 m, 18' 3" 2-piece Arm: 2.9 m, 9' 6" Shoe: 700 mm, 28" CWT: 6 200 kg, 13,669 lb Dozer blade down	9 m kg	-	-	*7 890	*7 890	-	-	-	-	-	-	*5 990	*5 990
	30 ft lb	-	-	*17,480	*17,480	-	-	-	-	-	-	*13,660	*13,660
	7.5 m kg	-	-	-	-	*7 010	*7 010	*5 930	*5 930	-	-	*4 920	*4 920
	25 ft lb	-	-	-	-	*15,500	*15,500	*11,710	*11,710	-	-	*10,960	*10,960
	6 m kg	-	-	*6 060	*6 060	*7 010	*7 010	*7 170	6 160	-	-	*4 550	4 320
	20 ft lb	-	-	*13,420	*13,420	*15,460	*15,460	*15,600	13,250	-	-	*10,060	9,650
	4.5 m kg	-	-	*9 910	*9 910	*9 130	*9 130	*8 480	5 970	*6 780	4 190	*4 440	3 680
	15 ft lb	-	-	*20,360	*20,360	*19,600	*19,600	*18,370	12,870	*14,110	9,010	*9,800	8,170
	3 m kg	-	-	-	-	*12 360	8 750	*9 360	5 700	*7 660	4 070	*4 520	3 370
	10 ft lb	-	-	-	-	*26,720	18,890	*20,310	12,290	*16,630	8,780	*9,950	7,450
	1.5 m kg	-	-	-	-	*13 270	8 180	*9 770	5 430	*7 710	3 950	*4 760	3 260
	5 ft lb	-	-	-	-	*28,760	17,650	*21,180	11,710	*16,710	8,510	*10,490	7,190
	0 m kg	-	-	-	-	*12 890	7 890	*9 610	5 240	*7 400	3 850	*5 240	3 320
	0 ft lb	-	-	-	-	*28,000	16,990	*20,840	11,310	*15,970	8,320	*11,530	7,330
	-1.5 m kg	-	-	*9 410	*9 410	*11 330	7 820	*8 660	5 180	*6 370	3 830	*5 610	3 590
	-5 ft lb	-	-	*21,470	*21,470	*24,610	16,850	*18,720	11,170	*13,530	8,290	*12,350	7,950
	-3.0 m kg	-	-	-	-	*8 660	7 920	*6 620	5 230	-	-	*4 660	4 230
	-10 ft lb	-	-	-	-	*18,670	17,060	*14,080	11,300	-	-	*10,180	9,390
Boom: 5.7 m, 18' 8" Arm: 2.5 m, 8' 2" Shoe: 800 mm, 32" CWT: 6 200 kg, 13,669 lb	9 m kg	-	-	*8 380	*8 380	-	-	-	-	-	-	*8 380	*8 380
	30 ft lb	-	-	-	-	-	-	-	-	-	-	-	-
	7.5 m kg	-	-	-	-	*6 890	*6 890	-	-	-	-	*6 680	6 410
	25 ft lb	-	-	-	-	*15,310	*15,310	-	-	-	-	*14,870	14,710
	6 m kg	-	-	-	-	*7 210	*7 210	*6 880	5 520	-	-	*6 230	4 560
	20 ft lb	-	-	-	-	*15,730	*15,730	*15,140	11,870	-	-	*13,780	10,220
	4.5 m kg	-	-	*11 790	*11 790	*8 700	8 360	*7 430	5 360	-	-	5 990	3 780
	15 ft lb	-	-	*25,070	*25,070	*18,800	18,040	*16,200	11,560	-	-	13,290	8,390
	3 m kg	-	-	-	-	*10 880	7 780	8 290	5 120	5 860	3 670	5 430	3 400
	10 ft lb	-	-	-	-	*23,450	16,800	*17,850	11,050	12,620	7,900	12,000	7,520
	1.5 m kg	-	-	-	-	12 670	7 280	8 020	4 880	5 740	3 560	5 250	3 260
	5 ft lb	-	-	-	-	27,220	15,710	17,270	10,530	12,370	7,680	11,570	7,190
	0 m kg	-	-	-	-	12 380	7 030	7 830	4 710	5 650	3 480	5 370	3 310
	0 ft lb	-	-	-	-	26,560	15,160	16,870	10,180	12,190	7,510	11,850	7,310
	-1.5 m kg	-	-	*11 650	*11 650	12 310	6 980	7 760	4 650	-	-	5 900	3 610
	-5 ft lb	-	-	*26,580	*26,580	26,420	15,040	16,720	10,050	-	-	13,030	7,990
	-3.0 m kg	-	-	*15 910	13 760	*11 700	7 060	7 830	4 710	-	-	7 190	4 370
	-10 ft lb	-	-	*34,520	29,500	*25,290	15,230	16,880	10,190	-	-	16,010	9,720
	-4.5 m kg	-	-	*11 740	*11 740	*8 570	7 330	-	-	-	-	*7 760	6 580
	-15 ft lb	-	-	*25,040	*25,040	*18,000	15,840	-	-	-	-	*17,040	14,980
Boom: 5.7 m, 18' 8" Arm: 2.9 m, 9' 6" Shoe: 800 mm, 32" CWT: 6 200 kg, 13,669 lb	9 m kg	-	-	-	-	-	-	-	-	-	-	*5 830	*5 830
	30 ft lb	-	-	-	-	-	-	-	-	-	-	*13,290	*13,290
	7.5 m kg	-	-	-	-	*6 150	*6 150	*4 920	*4 920	-	-	*4 830	*4 830
	25 ft lb	-	-	-	-	*13,650	*13,650	-	-	-	-	*10,750	*10,750
	6 m kg	-	-	-	-	*6 530	*6 530	*6 380	5 580	-	-	*4 530	4 130
	20 ft lb	-	-	-	-	*14,270	*14,270	*14,020	12,010	-	-	*10,010	9,230
	4.5 m kg	-	-	*10 230	*10 230	*8 010	*7 000	5 410	6 000	3 790	-	*4 490	3 480
	15 ft lb	-	-	*21,800	*21,800	*17,330	*17,330	*15,250	11,670	*12,460	8,150	*9,900	7,720
	3 m kg	-	-	-	-	*10 230	7 900	*8 000	5 160	5 880	3 680	*4 650	3 150
	10 ft lb	-	-	-	-	*22,050	17,050	*17,370	11,130	12,660	7,930	*10,220	6,970
	1.5 m kg	-	-	-	-	*12 250	7 350	8 040	4 900	5 740	3 560	4 880	3 030
	5 ft lb	-	-	-	-	*26,460	15,860	17,320	10,570	12,370	7,670	10,770	6,680
	0 m kg	-	-	*6 180	*6 180	12 390	7 040	7 830	4 710	5 630	3 460	4 980	3 070
	0 ft lb	-	-	*14,270	*14,270	26,590	15,170	16,850	10,160	12,140	7,460	10,980	6,770
	-1.5 m kg	*6 750	*6 750	*10 980	*10 980	12 270	6 940	7 730	4 620	5 590	3 420	5 400	3 310
	-5 ft lb	*15,120	*15,120	*24,960	*24,960	26,320	14,940	16,640	9,960	12,060	7,390	11,940	7,320
	-3.0 m kg	*11 760	*11 760	*17 000	13 600	*12 150	6 980	7 750	4 640	-	-	6 410	3 900
	-10 ft lb	*26,420	*26,420	*36,850	29,140	*26,290	15,050	16,700	10,020	-	-	14,250	8,680
	-4.5 m kg	-	-	*13 310	*13 310	*9 670	7 190	-	-	-	-	*7 590	5 460
	-15 ft lb	-	-	*28,510	*28,510	*20,590	15,520	-	-	-	-	*16,710	12,320

Notes: 1. Machine in "Fine Mode-F" (Power Boost) for lifting capacities. 2. The above loads are in compliance with SAE J1097 and ISO 10567 Hydraulic Excavator Lifting Capacity Standards.

3. Rated loads do not exceed 87% of hydraulic lifting capacity or 75% of tipping load. 4. Rated loads marked with an asterisk (*) are limited by hydraulic capacity rather than tipping load.

Specifications

LIFTING CAPACITY ECR235EL

Lifting capacity at the arm end without bucket.

For lifting capacity including bucket, simply subtract actual weight of the direct fit bucket or the bucket with quick coupler from the following values.

	Lifting hook related to ground level	1.5 m, 5 ft		3.0 m, 10 ft		4.5 m, 15 ft		6.0 m, 20 ft		7.5 m, 25 ft		Max. Reach		
		Along UC	Across UC	Along UC	Across UC	Along UC	Across UC	Along UC	Across UC	Along UC	Across UC	Along UC	Across UC	
Boom: 5.7 m, 18' 8" Arm: 2.5 m, 8' 2" Shoe: 800 mm, 32" CWT: 6 200 kg, 13,669 lb Dozer blade down	9 m kg	-	-	*8 380	*8 380	-	-	-	-	-	-	*8 380	*8 380	3.1 m
	30 ft lb	-	-	-	-	-	-	-	-	-	-	-	-	-
	7.5 m kg	-	-	-	-	*6 890	*6 890	-	-	-	-	*6 680	*6 680	5.5 m
	25 ft lb	-	-	-	-	*15,310	*15,310	-	-	-	-	*14,870	*14,870	17.5 ft
	6 m kg	-	-	-	-	*7 210	*7 210	*6 880	6 320	-	-	*6 230	5 240	6.7 m
	20 ft lb	-	-	-	-	*15,730	*15,730	*15,140	13,600	-	-	*13,780	11,730	21.9 ft
	4.5 m kg	-	-	*11 790	*11 790	*8 700	*8 700	*7 430	6 160	-	-	*6 200	4 360	7.5 m
	15 ft lb	-	-	*25,070	*25,070	*18,800	*18,800	*16,200	13,290	-	-	*13,670	9,680	24.4 ft
	3 m kg	-	-	-	-	*10 880	9 030	*8 380	5 910	*7 220	4 250	*6 460	3 940	7.9 m
	10 ft lb	-	-	-	-	*23,450	19,490	*18,180	12,760	*15,770	9,160	*14,200	8,710	25.8 ft
	1.5 m kg	-	-	-	-	*12 700	8 520	*9 290	5 670	*7 610	4 140	*7 010	3 790	8.0 m
	5 ft lb	-	-	-	-	*27,450	18,370	*20,150	12,240	*16,550	8,920	*15,420	8,360	26.1 ft
	0 m kg	-	-	-	-	*13 390	8 270	*9 820	5 500	*7 790	4 060	*7 490	3 860	7.8 m
	0 ft lb	-	-	-	-	*29,020	17,810	*21,300	11,870	*16,890	8,760	*16,510	8,520	25.5 ft
	-1.5 m kg	-	-	*11 650	*11 650	*13 040	8 210	*9 720	5 440	-	-	*7 740	4 220	7.3 m
	-5 ft lb	-	-	*26,580	*26,580	*28,290	17,690	*21,060	11,740	-	-	*17,090	9,320	23.8 ft
	-3.0 m kg	-	-	*15 910	*15 910	*11 700	8 300	*8 660	5 500	-	-	*7 950	5 090	6.4 m
	-10 ft lb	-	-	*34,520	*34,520	*25,290	17,880	*18,550	11,890	-	-	*17,530	11,330	20.8 ft
	-4.5 m kg	-	-	*11 740	*11 740	*8 570	*8 570	-	-	-	-	*7 760	7 680	4.9 m
	-15 ft lb	-	-	*25,040	*25,040	*18,000	*18,000	-	-	-	-	*17,040	*17,040	15.6 ft
Boom: 5.7 m, 18' 8" Arm: 2.9 m, 9' 6" Shoe: 800 mm, 32" CWT: 6 200 kg, 13,669 lb Dozer blade down	9 m kg	-	-	-	-	-	-	-	-	-	-	*5 830	*5 830	4.0 m
	30 ft lb	-	-	-	-	-	-	-	-	-	-	*13,290	*13,290	12.3 ft
	7.5 m kg	-	-	-	-	*6 150	*6 150	*4 920	*4 920	-	-	*4 830	*4 830	6.0 m
	25 ft lb	-	-	-	-	*13,650	*13,650	-	-	-	-	*10,750	*10,750	19.4 ft
	6 m kg	-	-	-	-	*6 530	*6 530	*6 380	*6 380	-	-	*4 530	*4 530	7.2 m
	20 ft lb	-	-	-	-	*14,270	*14,270	*14,020	13,740	-	-	*10,010	*10,010	23.4 ft
	4.5 m kg	-	-	*10 230	*10 230	*8 010	*8 010	*7 000	6 220	*6 170	4 370	*4 490	4 020	7.9 m
	15 ft lb	-	-	*21,800	*21,800	*17,330	*17,330	*15,250	13,400	*12,460	9,410	*9,900	8,920	25.8 ft
	3 m kg	-	-	-	-	*10 230	9 160	*8 000	5 950	*6,940	4 260	*4 650	3 660	8.3 m
	10 ft lb	-	-	-	-	*22,050	19,750	*17,370	12,850	*15,140	9,190	*10,220	8,100	27.1 ft
	1.5 m kg	-	-	-	-	*12 250	8 590	*9 020	5 690	*7 410	4 130	*4 990	3 530	8.4 m
	5 ft lb	-	-	-	-	*26,460	18,530	*19,550	12,280	*16,130	8,920	*10,990	7,780	27.4 ft
	0 m kg	-	-	*6 180	*6 180	*13 250	8 270	*9 680	5 490	*7 720	4 030	*5 610	3 580	8.2 m
	0 ft lb	-	-	*14,270	*14,270	*28,700	17,820	*21,000	11,860	*16,750	8,700	*12,380	7,900	26.8 ft
	-1.5 m kg	*6 750	*6 750	*10 980	*10 980	*13 190	8 170	*9 770	5 400	*7 580	3 990	*6 740	3 870	7.7 m
	-5 ft lb	*15,120	*15,120	*24,960	*24,960	*28,610	17,590	*21,180	11,660	*16,330	8,630	*14,900	8,550	25.2 ft
	-3.0 m kg	*11 760	*11 760	*17 000	16 340	*12 150	8 220	*9 040	5 430	-	-	*7 560	4 560	6.8 m
	-10 ft lb	*26,420	*26,420	*36,850	34,970	*26,290	17,700	*19,470	11,720	-	-	*16,680	10,130	22.3 ft
	-4.5 m kg	-	-	*13 310	*13 310	*9 670	8 430	-	-	-	-	*7 590	6 360	5.5 m
	-15 ft lb	-	-	*28,510	*28,510	*20,590	18,180	-	-	-	-	*16,710	14,370	17.7 ft
Boom: 5.57 m, 18' 3" 2-piece Arm: 2.5 m, 8' 2" Shoe: 800 mm, 32" CWT: 6 200 kg, 13,669 lb	9 m kg	-	-	*9 840	*9 840	-	-	-	-	-	-	*8 670	*8 670	3.6 m
	30 ft lb	-	-	*21,210	*21,210	-	-	-	-	-	-	*20,010	*20,010	10.7 ft
	7.5 m kg	-	-	*8 290	*8 290	*8 730	*8 730	-	-	-	-	*6 830	5 840	5.7 m
	25 ft lb	-	-	*18,600	*18,600	*19,240	18,970	-	-	-	-	*15,220	13,370	18.4 ft
	6 m kg	-	-	*7 680	*7 680	*8 800	8 700	*8 660	5 450	-	-	*6 280	4 250	6.9 m
	20 ft lb	-	-	*16,960	*16,960	*19,360	18,730	18,720	11,710	-	-	*13,880	9,510	22.6 ft
	4.5 m kg	-	-	-	-	*11 340	8 250	8 520	5 280	5 930	3 690	*5 710	3 550	7.7 m
	15 ft lb	-	-	-	-	*24,540	17,800	18,340	11,380	12,730	7,930	12,660	7,880	25.1 ft
	3 m kg	-	-	-	-	*12 760	7 620	8 230	5 020	5 830	3 600	*5 210	3 210	8.1 m
	10 ft lb	-	-	-	-	*27,590	16,470	17,730	10,840	12,540	7,750	11,510	7,110	26.4 ft
	1.5 m kg	-	-	-	-	*12 580	7 120	7 960	4 780	5 710	3 490	*5 050	3 100	8.1 m
	5 ft lb	-	-	-	-	*27,020	15,380	17,150	10,320	12,300	7,530	11,140	6,830	26.7 ft
	0 m kg	-	-	-	-	*12 320	6 910	7 790	4 630	5 630	3 420	*5 180	3 160	8.0 m
	0 ft lb	-	-	-	-	*26,440	14,900	16,780	9,990	12,140	7,390	11,430	6,980	26.1 ft
	-1.5 m kg	-	-	*9 780	*9 780	*10 700	6 900	7 750	4 590	-	-	*5 690	3 460	7.5 m
	-5 ft lb	-	-	*22,430	*22,430	*23,260	14,870	16,690	9,920	-	-	12,570	7,650	24.4 ft
	-3.0 m kg	-	-	-	-	*7 710	7 030	*5 820	4 690	-	-	-	-	6.6 m
	-10 ft lb	-	-	-	-	*16,590	15,160	*12,220	10,140	-	-	-	-	21.5 ft
Boom: 5.57 m, 18' 3" 2-piece Arm: 2.9 m, 9' 6" Shoe: 800 mm, 32" CWT: 6 200 kg, 13,669 lb	9 m kg	-	-	*7 890	*7 890	-	-	-	-	-	-	*5 990	*5 990	4.4 m
	30 ft lb	-	-	*17,480	*17,480	-	-	-	-	-	-	*13,660	*13,660	13.7 ft
	7.5 m kg	-	-	-	-	*7 010	*7 010	*5 930	5 520	-	-	*4 920	*4 920	6.3 m
	25 ft lb	-	-	-	-	*15,500	*15,500	*11,710	*11,710	-	-	*10,960	*10,960	20.2 ft
	6 m kg	-	-	*6 060	*6 060	*7 010	*7 010	*7 170	5 520	-	-	*4 550	3 840	7.4 m
	20 ft lb	-	-	*13,420	*13,420	*15,460	*15,460	*15,600	11,870	-	-	*10,060	8,590	24.1 ft
	4.5 m kg	-	-	*9 910	*9 910	*9 130	8 390	*8 480	5 330	5 970	3 730	*4 440	3 270	8.1 m
	15 ft lb	-	-	*20,360	*20,360	*19,600	18,090	*18,370	11,490	12,830	8,010	*9,800	7,250	26.5 ft
	3 m kg	-	-	-	-	*12 360	7 750	8 290	5 060	5 840	3 610	*4 520	2 980	8.5 m
	10 ft lb	-	-	-	-	*26,720	16,740	17,840	10,920	12,580	7,780	*9,950	6,580	27.7 ft
	1.5 m kg	-	-	-	-	*12 670	7 190	7 990	4 800	5 700	3 490	*4 690	2 870	8.5 m
	5 ft lb	-	-	-	-	*27,210	15,520	17,200	10,350	12,290	7,520	10,360	6,340	28.0 ft
	0 m kg	-	-	-	-	*12 320	6 910	7 780	4 620	5 600	3 390	*4 800	2 920	8.4 m
	0 ft lb	-	-	-	-	*26,440	14,890	16,750	9,960	12,080	7,320	10,590	6,450	27.4 ft
	-1.5 m kg	-	-	*9 410	*9 410	*11 330	6 840	7 710	4 550	5 580	3 370	*5 210	3 160	7.9 m
	-5 ft lb	-	-	*21,470	*21,470	*24,610	14,740	16,590	9,820	12,050	7,290	11,520	7,000	25.9 ft
	-3.0 m kg	-	-	-	-	*8 660	6 940	*6 620	4 600	-	-	*4 660	3 730	7.1 m
	-10 ft lb	-	-	-	-	*18,670	14,950	*14,080	9,950	-	-	*10,180	8,280	23.1 ft

Notes: 1. Machine in "Fine Mode-F" (Power Boost) for lifting capacities. 2. The above loads are in compliance with SAE J1097 and ISO 10567 Hydraulic Excavator Lifting Capacity Standards.

3. Rated loads do not exceed 87% of hydraulic lifting capacity or 75% of tipping load. 4. Rated loads marked with an asterisk (*) are limited by hydraulic capacity rather than tipping load.

LIFTING CAPACITY ECR235EL

Lifting capacity at the arm end without bucket.

For lifting capacity including bucket, simply subtract actual weight of the direct fit bucket or the bucket with quick coupler from the following values.

	Lifting hook related to ground level		1.5 m, 5 ft		3.0 m, 10 ft		4.5 m, 15 ft		6.0 m, 20 ft		7.5 m, 25 ft		Max. Reach	
			Along UC	Across UC	Along UC	Across UC	Along UC	Across UC	Along UC	Across UC	Along UC	Across UC	Along UC	Across UC
Boom: 5.57 m, 18' 3" 2-piece Arm: 2.5 m, 8' 2" Shoe: 800 mm, 32" CWT: 6 200 kg, 13,669 lb Dozer blade down	9 m	kg	-	-	*9 840	*9 840	-	-	-	-	-	-	*8 670	*8 670
	30 ft	lb	-	-	*21,210	*21,210	-	-	-	-	-	-	*20,010	*20,010
	7.5 m	kg	-	-	*8 290	*8 290	*8 730	*8 730	-	-	-	-	*6 830	*6 710
	25 ft	lb	-	-	*18,600	*18,600	*19,240	*19,240	-	-	-	-	*15,220	*15,220
	6 m	kg	-	-	*7 680	*7 680	*8 800	*8 800	*8 660	6 260	-	-	*6 280	4 900
	20 ft	lb	-	-	*16,960	*16,960	*19,360	*19,360	*18,910	13,460	-	-	*13,880	10,970
	4.5 m	kg	-	-	-	-	*11 340	9 530	*9 040	6 080	*7 290	4 280	*6 140	4 120
	15 ft	lb	-	-	-	-	*24,540	20,550	*19,650	13,120	*13,970	9,190	*13,550	9,140
	3 m	kg	-	-	-	-	*12 760	8 890	*9 570	5 820	*7 760	4 180	*6 280	3 740
	10 ft	lb	-	-	-	-	*27,590	19,190	*20,770	12,570	*16,850	9,020	*13,830	8,280
	1.5 m	kg	-	-	-	-	*13 350	8 370	*9 840	5 580	*7 710	4 070	*6 680	3 620
	5 ft	lb	-	-	-	-	*28,950	18,060	*21,340	12,040	*16,680	8,790	*14,690	7,980
	0 m	kg	-	-	-	-	*12 570	8 160	*9 490	5 420	*7 210	4 000	*6 450	3 700
	0 ft	lb	-	-	-	-	*27,350	17,570	*20,580	11,700	*15,500	8,650	*14,220	8,160
	-1.5 m	kg	-	-	*9 780	*9 780	*10 700	8 150	*8 290	5 390	-	-	*5 810	4 040
	-5 ft	lb	-	-	*22,430	*22,430	*23,260	17,540	*17,900	11,630	-	-	*12,780	8,940
	-3.0 m	kg	-	-	-	-	*7 710	*7 710	*5 820	5 480	-	-	-	-
	-10 ft	lb	-	-	-	-	*16,590	*16,590	*12,220	11,850	-	-	-	-
Boom: 5.57 m, 18' 3" 2-piece Arm: 2.9 m, 9' 6" Shoe: 800 mm, 32" CWT: 6 200 kg, 13,669 lb Dozer blade down	9 m	kg	-	-	*7 890	*7 890	-	-	-	-	-	-	*5 990	*5 990
	30 ft	lb	-	-	*17,480	*17,480	-	-	-	-	-	-	*13,660	*13,660
	7.5 m	kg	-	-	-	-	*7 010	*7 010	*5 930	*5 930	-	-	*4 920	*4 920
	25 ft	lb	-	-	-	-	*15,500	*15,500	*11,710	*11,710	-	-	*10,960	*10,960
	6 m	kg	-	-	*6 060	*6 060	*7 010	*7 010	*7 170	6 330	-	-	*4 550	4 440
	20 ft	lb	-	-	*13,420	*13,420	*15,460	*15,460	*15,600	13,620	-	-	*10,060	9,930
	4.5 m	kg	-	-	*9 910	*9 910	*9 130	*9 130	*8 480	6 140	*6 780	4 310	*4 440	3 800
	15 ft	lb	-	-	*20,360	*20,360	*19,600	*19,600	*18,370	13,240	*14,110	9,280	*9,800	8,420
	3 m	kg	-	-	-	-	*12 360	9 020	*9 360	5 870	*7 660	4 200	*4 520	3 480
	10 ft	lb	-	-	-	-	*26,720	19,470	*20,310	12,650	*16,630	9,050	*9,950	7,680
	1.5 m	kg	-	-	-	-	*13 270	8 450	*9 770	5 600	*7 710	4 070	*4 760	3 360
	5 ft	lb	-	-	-	-	*28,760	18,220	*21,180	12,070	*16,710	8,780	*10,490	7,420
	0 m	kg	-	-	-	-	*12 890	8 150	*9 610	5 410	*7 400	3 980	*5 240	3 430
	0 ft	lb	-	-	-	-	*28,000	17,560	*20,840	11,670	*15,970	8,580	*11,530	7,560
	-1.5 m	kg	-	-	*9 410	*9 410	*11 330	8 090	*8 660	5 340	*6 370	3 960	*5 610	3 710
	-5 ft	lb	-	-	*21,470	*21,470	*24,610	17,410	*18,720	11,530	*13,530	8,550	*12,350	8,200
	-3.0 m	kg	-	-	-	-	*8 660	8 180	*6 620	5 400	-	-	*4 660	4 360
	-10 ft	lb	-	-	-	-	*18,670	17,630	*14,080	11,660	-	-	*10,180	9,680
Boom: 5.7 m, 18' 8" Arm: 2.5 m, 8' 2" Shoe: 900 mm, 35" CWT: 6 200 kg, 13,669 lb	9 m	kg	-	-	*8 380	*8 380	-	-	-	-	-	-	*8 380	*8 380
	30 ft	lb	-	-	-	-	-	-	-	-	-	-	-	-
	7.5 m	kg	-	-	-	-	*6 890	*6 890	-	-	-	-	*6 680	6 480
	25 ft	lb	-	-	-	-	*15,310	*15,310	-	-	-	-	*14,870	14,860
	6 m	kg	-	-	-	-	*7 210	*7 210	*6 880	5 580	-	-	*6 230	4 610
	20 ft	lb	-	-	-	-	*15,730	*15,730	*15,140	12,000	-	-	*13,780	10,330
	4.5 m	kg	-	-	*11 790	*11 790	*8 700	8 450	*7 430	5 420	-	-	6 060	3 820
	15 ft	lb	-	-	*25,070	*25,070	*18,800	18,230	*16,200	11,690	-	-	13,460	8,490
	3 m	kg	-	-	-	-	*10 880	7 860	*8 380	5 180	5 940	3 710	5 500	3 440
	10 ft	lb	-	-	-	-	*23,450	16,990	18,060	11,180	12,780	8,000	12,160	7,610
	1.5 m	kg	-	-	-	-	*12 700	7 360	8 120	4 940	5 810	3 600	5 310	3 300
	5 ft	lb	-	-	-	-	*27,450	15,900	17,480	10,660	12,530	7,780	11,720	7,280
	0 m	kg	-	-	-	-	12 530	7 120	7 930	4 770	5 730	3 520	5 440	3 360
	0 ft	lb	-	-	-	-	26,900	15,350	17,080	10,310	12,350	7,610	12,000	7,410
	-1.5 m	kg	-	-	*11 650	*11 650	12 470	7 070	7 860	4 710	-	-	5 970	3 660
	-5 ft	lb	-	-	*26,580	*26,580	26,760	15,230	16,940	10,180	-	-	13,200	8,090
	-3.0 m	kg	-	-	*15 910	13 930	*11 700	7 150	7 930	4 770	-	-	7 290	4 420
	-10 ft	lb	-	-	*34,520	29,850	*25,290	15,420	17,100	10,320	-	-	16,210	9,840
	-4.5 m	kg	-	-	*11 740	*11 740	*8 570	7 420	-	-	-	-	*7 760	6 660
	-15 ft	lb	-	-	*25,040	*25,040	*18,000	16,040	-	-	-	-	*17,040	15,160

Notes: 1. Machine in "Fine Mode-F" (Power Boost) for lifting capacities. 2. The above loads are in compliance with SAE J1097 and ISO 10567 Hydraulic Excavator Lifting Capacity Standards.

3. Rated loads do not exceed 87% of hydraulic lifting capacity or 75% of tipping load. 4. Rated loads marked with an asterisk (*) are limited by hydraulic capacity rather than tipping load.

Specifications

LIFTING CAPACITY ECR235EL

Lifting capacity at the arm end without bucket.

For lifting capacity including bucket, simply subtract actual weight of the direct fit bucket or the bucket with quick coupler from the following values.

	Lifting hook related to ground level	1.5 m, 5 ft		3.0 m, 10 ft		4.5 m, 15 ft		6.0 m, 20 ft		7.5 m, 25 ft		Max. Reach		
		Along UC	Across UC	Along UC	Across UC	Along UC	Across UC	Along UC	Across UC	Along UC	Across UC	Along UC	Across UC	
Boom: 5.7 m, 18' 8" Arm: 2.9 m, 9' 6" Shoe: 900 mm, 35" CWT: 6 200 kg, 13,669 lb	9 m kg	-	-	-	-	-	-	-	-	-	-	*5 830	*5 830	4.0 m
	30 ft lb	-	-	-	-	-	-	-	-	-	-	*13,290	*13,290	12.3 ft
	7.5 m kg	-	-	-	-	*6 150	*6 150	*4 920	*4 920	-	-	*4 830	*4 830	6.0 m
	25 ft lb	-	-	-	-	*13,650	*13,650	-	-	-	-	*10,750	*10,750	19.4 ft
	6 m kg	-	-	-	-	*6 530	*6 530	*6 380	5 640	-	-	*4 530	4 170	7.2 m
	20 ft lb	-	-	-	-	*14,270	*14,270	*14,020	12,140	-	-	*10,010	9,340	23.4 ft
	4.5 m kg	-	-	*10 230	*10 230	*8 010	*8 010	*7 000	5 470	6 070	3 840	*4 490	3 520	7.9 m
	15 ft lb	-	-	*21,800	*21,800	*17,330	*17,330	*15,250	11,800	*12,460	8,250	*9,900	7,820	25.8 ft
	3 m kg	-	-	-	-	*10 230	7 980	*8 000	5 220	5 950	3 730	*4 650	3 190	8.3 m
	10 ft lb	-	-	-	-	*22,050	17,240	*17,370	11,260	12,820	8,030	*10,220	7,060	27.1 ft
	1.5 m kg	-	-	-	-	*12 250	7 440	8 140	4 960	5 810	3 600	4 940	3 070	8.4 m
	5 ft lb	-	-	-	-	*26,460	16,050	17,540	10,700	12,530	7,770	10,910	6,770	27.4 ft
	0 m kg	-	-	*6 180	*6 180	12 550	7 120	7 930	4 770	5 710	3 500	5 050	3 110	8.2 m
	0 ft lb	-	-	*14,270	*14,270	26,930	15,360	17,070	10,290	12,300	7,560	11,130	6,860	26.8 ft
	-1.5 m kg	*6 750	*6 750	*10 980	*10 980	12 430	7 020	7 830	4 680	5 660	3 460	5 470	3 360	7.7 m
	-5 ft lb	*15,120	*15,120	*24,960	*24,960	26,660	15,130	16,860	10,090	12,220	7,490	12,100	7,410	25.2 ft
	-3.0 m kg	*11 760	*11 760	*17 000	13 760	*12 150	7 070	7 850	4 700	-	-	6 500	3 960	6.8 m
	-10 ft lb	*26,420	*26,420	*36,850	29,490	*26,290	15,240	16,920	10,150	-	-	14,440	8,790	22.3 ft
	-4.5 m kg	-	-	*13 310	*13 310	*9 670	7 270	-	-	-	-	*7 590	5 520	5.5 m
	-15 ft lb	-	-	*28,510	*28,510	*20,590	15,710	-	-	-	-	*16,710	12,480	17.7 ft
Boom: 5.7 m, 18' 8" Arm: 2.5 m, 8' 2" Shoe: 900 mm, 35" CWT: 6 200 kg, 13,669 lb Dozer blade down	9 m kg	-	-	*8 380	*8 380	-	-	-	-	-	-	*8 380	*8 380	3.1 m
	30 ft lb	-	-	-	-	-	-	-	-	-	-	-	-	-
	7.5 m kg	-	-	-	-	*6 890	*6 890	-	-	-	-	*6 680	*6 680	5.5 m
	25 ft lb	-	-	-	-	*15,310	*15,310	-	-	-	-	*14,870	*14,870	17.5 ft
	6 m kg	-	-	-	-	*7 210	*7 210	*6 880	6 390	-	-	*6 230	5 290	6.7 m
	20 ft lb	-	-	-	-	*15,730	*15,730	*15,140	13,740	-	-	*13,780	11,860	21.9 ft
	4.5 m kg	-	-	*11 790	*11 790	*8 700	*8 700	*7 430	6 230	-	-	*6 200	4 410	7.5 m
	15 ft lb	-	-	*25,070	*25,070	*18,800	*18,800	*16,200	13,430	-	-	*13,670	9,790	24.4 ft
	3 m kg	-	-	-	-	*10 880	9 130	*8 380	5 980	*7 220	4 300	*6 460	3 990	7.9 m
	10 ft lb	-	-	-	-	*23,450	19,700	*18,180	12,900	*15,770	9,260	*14,200	8,820	25.8 ft
	1.5 m kg	-	-	-	-	*12 700	8 620	*9 290	5 730	*7 610	4 190	*7 010	3 840	8.0 m
	5 ft lb	-	-	-	-	*27,450	18,580	*20,150	12,380	*16,550	9,030	*15,420	8,460	26.1 ft
	0 m kg	-	-	-	-	*13 390	8 360	*9 820	5 570	*7 790	4 100	*7 490	3 910	7.8 m
	0 ft lb	-	-	-	-	*29,020	18,020	*21,300	12,020	*16,890	8,860	*16,510	8,630	25.5 ft
	-1.5 m kg	-	-	*11 650	*11 650	*13 040	8 310	*9 720	5 510	-	-	*7 740	4 270	7.3 m
	-5 ft lb	-	-	*26,580	*26,580	*28,290	17,900	*21,060	11,880	-	-	*17,090	9,430	23.8 ft
	-3.0 m kg	-	-	*15 910	*15 910	*11 700	8 400	*8 660	5 570	-	-	*7 950	5 150	6.4 m
	-10 ft lb	-	-	*34,520	*34,520	*25,290	18,090	*18,550	12,030	-	-	*17,530	11,460	20.8 ft
	-4.5 m kg	-	-	*11 740	*11 740	*8 570	8 570	-	-	-	-	*7 760	*7 760	4.9 m
	-15 ft lb	-	-	*25,040	*25,040	*18,000	*18,000	-	-	-	-	*17,040	*17,040	15.6 ft
Boom: 5.7 m, 18' 8" Arm: 2.9 m, 9' 6" Shoe: 900 mm, 35" CWT: 6 200 kg, 13,669 lb Dozer blade down	9 m kg	-	-	-	-	-	-	-	-	-	-	*5 830	*5 830	4.0 m
	30 ft lb	-	-	-	-	-	-	-	-	-	-	*13,290	*13,290	12.3 ft
	7.5 m kg	-	-	-	-	*6 150	*6 150	*4 920	*4 920	-	-	*4 830	*4 830	6.0 m
	25 ft lb	-	-	-	-	*13,650	*13,650	-	-	-	-	*10,750	*10,750	19.4 ft
	6 m kg	-	-	-	-	*6 530	*6 530	*6 380	*6 380	-	-	*4 530	*4 530	7.2 m
	20 ft lb	-	-	-	-	*14,270	*14,270	*14,020	13,890	-	-	*10,010	*10,010	23.4 ft
	4.5 m kg	-	-	*10 230	*10 230	*8 010	*8 010	*7 000	6 280	*6 170	4 420	*4 490	4 070	7.9 m
	15 ft lb	-	-	*21,800	*21,800	*17,330	*17,330	*15,250	13,540	*12,460	9,520	*9,900	9,030	25.8 ft
	3 m kg	-	-	-	-	*10 230	9 250	*8 000	6 020	*6 940	4 310	*4 650	3 710	8.3 m
	10 ft lb	-	-	-	-	*22,050	19,960	*17,370	12,990	*15,140	9,290	*10,220	8,190	27.1 ft
	1.5 m kg	-	-	-	-	*12 250	8 690	*9 020	5 750	*7 410	4 180	*4 990	3 570	8.4 m
	5 ft lb	-	-	-	-	*26,460	18,740	*19,550	12,420	*16,130	9,020	*10,990	7,880	27.4 ft
	0 m kg	-	-	*6 180	*6 180	*13 250	8 370	*9 680	5 560	*7 720	4 080	*5 610	3 630	8.2 m
	0 ft lb	-	-	*14,270	*14,270	*28,700	18,030	*21,000	12,000	*16,750	8,810	*12,380	8,000	26.8 ft
	-1.5 m kg	*6 750	*6 750	*10 980	*10 980	*13 190	8 270	*9 770	5 470	*7 580	4 040	*6 740	3 920	7.7 m
	-5 ft lb	*15,120	*15,120	*24,960	*24,960	*28,610	17,800	*21,180	11,800	*16,330	8,740	*14,900	8,660	25.2 ft
	-3.0 m kg	*11 760	*11 760	*17 000	16 530	*12 150	8 310	*9 040	5 490	-	-	*7 560	4 610	6.8 m
	-10 ft lb	*26,420	*26,420	*36,850	35,370	*26,290	17,910	*19,470	11,860	-	-	*16,680	10,250	22.3 ft
	-4.5 m kg	-	-	*13 310	*13 310	*9 670	8 520	-	-	-	-	*7 590	6 440	5.5 m
	-15 ft lb	-	-	*28,510	*28,510	*20,590	18,390	-	-	-	-	*16,710	14,540	17.7 ft

Notes: 1. Machine in "Fine Mode-F" (Power Boost) for lifting capacities. 2. The above loads are in compliance with SAE J1097 and ISO 10567 Hydraulic Excavator Lifting Capacity Standards.

3. Rated loads do not exceed 87% of hydraulic lifting capacity or 75% of tipping load. 4. Rated loads marked with an asterisk (*) are limited by hydraulic capacity rather than tipping load.

LIFTING CAPACITY ECR235EL

Lifting capacity at the arm end without bucket.
For lifting capacity including bucket, simply subtract actual weight of the direct fit bucket or the bucket with quick coupler from the following values.

	Lifting hook related to ground level	1.5 m, 5 ft		3.0 m, 10 ft		4.5 m, 15 ft		6.0 m, 20 ft		7.5 m, 25 ft		Max. Reach	
		Along UC	Across UC	Along UC	Across UC	Along UC	Across UC	Along UC	Across UC	Along UC	Across UC	Along UC	Across UC
Boom: 5.57 m, 18' 3" 2-piece Arm: 2.5 m, 8' 2" Shoe: 900 mm, 35" CWT: 6 200 kg, 13,669 lb	9 m kg	-	-	*9 840	*9 840	-	-	-	-	-	-	*8 670	*8 670
	30 ft lb	-	-	*21,210	*21,210	-	-	-	-	-	-	*20,010	*20,010
	7.5 m kg	-	-	*8 290	*8 290	*8 730	*8 730	-	-	-	-	*6 830	5 910
	25 ft lb	-	-	*18,600	*18,600	*19,240	19,160	-	-	-	-	*15,220	13,510
	6 m kg	-	-	*7 680	*7 680	*8 800	8 790	*8 660	5 510	-	-	*6 280	4 300
	20 ft lb	-	-	*16,960	*16,960	*19,360	18,920	*18,910	11,840	-	-	*13,880	9,620
	4.5 m kg	-	-	-	-	*11 340	8 340	8 620	5 340	6 000	3 740	5 780	3 590
	15 ft lb	-	-	-	-	*24,540	17,990	18,560	11,510	12,890	8,020	12,820	7,980
	3 m kg	-	-	-	-	*12 760	7 710	8 330	5 080	5 900	3 640	5 270	3 260
	10 ft lb	-	-	-	-	*27,590	16,660	17,950	10,970	12,700	7,850	11,660	7,200
	1.5 m kg	-	-	-	-	12 730	7 210	8 060	4 840	5 780	3 540	5 120	3 140
	5 ft lb	-	-	-	-	27,350	15,570	17,360	10,450	12,460	7,630	11,280	6,920
	0 m kg	-	-	-	-	12 480	7 000	7 890	4 690	5 700	3 470	5 250	3 200
	0 ft lb	-	-	-	-	26,780	15,090	16,990	10,120	12,300	7,490	11,580	7,070
	-1.5 m kg	-	-	*9 780	*9 780	*10 700	6 990	7 850	4 650	-	-	5 760	3 500
	-5 ft lb	-	-	*22,430	*22,430	*23,260	15,060	16,910	10,050	-	-	12,730	7,750
	-3.0 m kg	-	-	-	-	*7 710	7 120	*5 820	4 750	-	-	-	-
	-10 ft lb	-	-	-	-	*16,590	15,360	*12,220	10,270	-	-	-	-
Boom: 5.57 m, 18' 3" 2-piece Arm: 2.9 m, 9' 6" Shoe: 900 mm, 35" CWT: 6 200 kg, 13,669 lb	9 m kg	-	-	*7 890	*7 890	-	-	-	-	-	-	*5 990	*5 990
	30 ft lb	-	-	*17,480	*17,480	-	-	-	-	-	-	*13,660	*13,660
	7.5 m kg	-	-	-	-	*7 010	*7 010	*5 930	5 580	-	-	*4 920	*4 920
	25 ft lb	-	-	-	-	*15,500	*15,500	*11,710	*11,710	-	-	*10,960	*10,960
	6 m kg	-	-	*6 060	*6 060	*7 010	*7 010	*7 170	5 580	-	-	*4 550	3 890
	20 ft lb	-	-	*13,420	*13,420	*15,460	*15,460	*15,600	12,000	-	-	*10,060	8,700
	4.5 m kg	-	-	*9 910	*9 910	*9 130	8 470	*8 480	5 390	6 040	3 770	*4 440	3 310
	15 ft lb	-	-	*20,360	*20,360	*19,600	18,280	*18,370	11,620	12,990	8,110	*9,800	7,340
	3 m kg	-	-	-	-	*12 360	7 840	8 390	5 120	5 920	3 660	*4 520	3 020
	10 ft lb	-	-	-	-	*26,720	16,930	18,060	11,050	12,740	7,880	*9,950	6,670
	1.5 m kg	-	-	-	-	12 820	7 280	8 090	4 860	5 780	3 530	*4 760	2 910
	5 ft lb	-	-	-	-	27,540	15,710	17,410	10,480	12,450	7,620	*10,490	6,420
	0 m kg	-	-	-	-	12 480	6 990	7 880	4 680	5 680	3 440	*4 870	2 960
	0 ft lb	-	-	-	-	26,780	15,080	16,970	10,090	12,240	7,420	*10,730	6,540
	-1.5 m kg	-	-	*9 410	*9 410	*11 330	6 930	7 810	4 610	5 660	3 420	5 280	3 210
	-5 ft lb	-	-	*21,470	*21,470	*24,610	14,940	16,810	9,950	12,210	7,390	11,670	7,090
	-3.0 m kg	-	-	-	-	*8 660	7 030	*6 620	4 660	-	-	*4 660	3 780
	-10 ft lb	-	-	-	-	*18,670	15,140	*14,080	10,080	-	-	*10,180	8,390
Boom: 5.57 m, 18' 3" 2-piece Arm: 2.5 m, 8' 2" Shoe: 900 mm, 35" CWT: 6 200 kg, 13,669 lb Dozer blade down	9 m kg	-	-	*9 840	*9 840	-	-	-	-	-	-	*8 670	*8 670
	30 ft lb	-	-	*21,210	*21,210	-	-	-	-	-	-	*20,010	*20,010
	7.5 m kg	-	-	*8 290	*8 290	*8 730	*8 730	-	-	-	-	*6 830	6 780
	25 ft lb	-	-	*18,600	*18,600	*19,240	*19,240	-	-	-	-	*15,220	*15,220
	6 m kg	-	-	*7 680	*7 680	*8 800	*8 800	*8 660	6 320	-	-	*6 280	4 960
	20 ft lb	-	-	*16,960	*16,960	*19,360	*19,360	*18,910	13,600	-	-	*13,880	11,100
	4.5 m kg	-	-	-	-	*11 340	9 630	*9 040	6 150	*7 290	4 330	*6 140	4 170
	15 ft lb	-	-	-	-	*24,540	20,760	*19,650	13,260	*13,970	9,300	*13,550	9,250
	3 m kg	-	-	-	-	*12 760	8 990	*9 570	5 890	*7 760	4 230	*6 280	3 790
	10 ft lb	-	-	-	-	*27,590	19,400	*20,770	12,710	*16,850	9,120	*13,830	8,380
	1.5 m kg	-	-	-	-	*13 350	8 470	*9 840	5 640	*7 710	4 120	*6 680	3 660
	5 ft lb	-	-	-	-	*28,950	18,270	*21,340	12,180	*16,680	8,900	*14,690	8,080
	0 m kg	-	-	-	-	*12 570	8 250	*9 490	5 490	*7 210	4 050	*6 450	3 750
	0 ft lb	-	-	-	-	*27,350	17,780	*20,580	11,850	*15,500	8,750	*14,220	8,270
	-1.5 m kg	-	-	*9 780	*9 780	*10 700	8 240	*8 290	5 450	-	-	*5 810	4 090
	-5 ft lb	-	-	*22,430	*22,430	*23,260	17,750	*17,900	11,770	-	-	*12,780	9,050
	-3.0 m kg	-	-	-	-	*7 710	*7 710	*5 820	5 550	-	-	-	-
	-10 ft lb	-	-	-	-	*16,590	*16,590	*12,220	12,000	-	-	-	-
Boom: 5.57 m, 18' 3" 2-piece Arm: 2.9 m, 9' 6" Shoe: 900 mm, 35" CWT: 6 200 kg, 13,669 lb Dozer blade down	9 m kg	-	-	*7 890	*7 890	-	-	-	-	-	-	*5 990	*5 990
	30 ft lb	-	-	*17,480	*17,480	-	-	-	-	-	-	*13,660	*13,660
	7.5 m kg	-	-	-	-	*7 010	*7 010	*5 930	*5 930	-	-	*4 920	*4 920
	25 ft lb	-	-	-	-	*15,500	*15,500	*11,710	*11,710	-	-	*10,960	*10,960
	6 m kg	-	-	*6 060	*6 060	*7 010	*7 010	*7 170	6 390	-	-	*4 550	4 490
	20 ft lb	-	-	*13,420	*13,420	*15,460	*15,460	*15,600	13,760	-	-	*10,060	10,040
	4.5 m kg	-	-	*9 910	*9 910	*9 130	*9 130	*8 480	6 210	*6 780	4 360	*4 440	3 840
	15 ft lb	-	-	*20,360	*20,360	*19,600	*19,600	*18,370	13,380	*14,110	9,390	*9,800	8,520
	3 m kg	-	-	-	-	*12 360	9 120	*9 360	5 930	*7 660	4 250	*4 520	3 520
	10 ft lb	-	-	-	-	*26,720	19,670	*20,310	12,800	*16,630	9,150	*9,950	7,780
	1.5 m kg	-	-	-	-	*13 270	8 540	*9 770	5 660	*7 710	4 120	*4 760	3 400
	5 ft lb	-	-	-	-	*28,760	18,420	*21,180	12,220	*16,710	8,880	*10,490	7,510
	0 m kg	-	-	-	-	*12 890	8 250	*9 610	5 480	*7 400	4 030	*5 240	3 470
	0 ft lb	-	-	-	-	*28,000	17,770	*20,840	11,820	*15,970	8,690	*11,530	7,660
	-1.5 m kg	-	-	*9 410	*9 410	*11 330	8 180	*8 660	5 410	*6 370	4 000	*5 610	3 760
	-5 ft lb	-	-	*21,470	*21,470	*24,610	17,620	*18,720	11,670	*13,530	8,660	*12,350	8,300
	-3.0 m kg	-	-	-	-	*8 660	8 280	*6 620	5 460	-	-	*4 660	4 410
	-10 ft lb	-	-	-	-	*18,670	17,840	*14,080	11,800	-	-	*10,180	9,800

Notes: 1. Machine in "Fine Mode-F" (Power Boost) for lifting capacities. 2. The above loads are in compliance with SAE J1097 and ISO 10567 Hydraulic Excavator Lifting Capacity Standards.
3. Rated loads do not exceed 87% of hydraulic lifting capacity or 75% of tipping load. 4. Rated loads marked with an asterisk (*) are limited by hydraulic capacity rather than tipping load.

Equipment

STANDARD EQUIPMENT

	ECR145E	ECR235E
Engine		
Turbocharged, 4 stroke diesel engine with water cooling, direct injection and charged air cooler that meets Tier 4f EU (Stage IV) requirements	•	•
Air filter with indicator	•	•
Air intake heater	•	•
Electric engine shut-off	•	•
Fuel filter and water separator	•	•
Standard cooling system	•	•
Fuel filler pump: 30 l/min / 7.9 gpm with auto stop	•	•
Alternator, 110 A	•	•
Electric/Electronic control system		
Contronics		
Advanced mode control system	•	•
Self-diagnostic system	•	•
Machine status indication	•	•
Satellite Caretrack and 3 yr-Caretrack subscription	•	•
Engine speed sensing power control	•	•
Automatic idling system	•	•
One-touch power boost	•	•
Safety stop/start function	•	•
Adjustable LCD color monitor	•	•
Master electrical disconnect switch	•	•
Engine restart prevention circuit	•	•
Travel alarm	•	•
High-capacity halogen or LED lights:		
Halogen		
Frame-mounted: 1, Boom-mounted: 2	•	•
LED		
Frame-mounted: 1, Boom-mounted: 2	•	•
Batteries, 2 x 12 V / 100 Ah	•	
Batteries, 2 x 12 V / 150 Ah		•
Start motor, 24 V / 5.5 kW	•	•
Hydraulic system		
Automatic sensing hydraulic system		
Summation system	•	•
Boom priority	•	•
Arm priority	•	•
ECO mode fuel saving technology	•	•
Boom, arm and bucket regeneration valves	•	•
Swing anti-rebound valves	•	•
Boom and arm holding valves	•	•
Multi-stage filtering system	•	•
Boom cylinders (x2)	•	•
Cylinder cushioning	•	•
Cylinder contamination seals	•	•
Auxiliary hydraulic valve	•	•
Automatic two-speed travel motors	•	•
Hydraulic oil, longlife oil 46	•	•
Frame		
Access way with handrail	•	•
Tool storage area	•	•
Punched metal anti-slip plates	•	•
Under cover (heavy duty)	•	•
3 200 kg / 7,060 lb counterweight	•	
6 200 kg / 13,670 lb counterweight		•

	ECR145E	ECR235E
Cab and interior		
ROPS (ISO12117-2) certified cab with openable roof hatch	•	•
Silicon oil and rubber mounts with spring	•	•
Control lock out lever	•	•
Travel pedals and hand levers	•	•
Adjustable operator seat with heater and joystick control console	•	•
Control joysticks with 4 switches each	•	•
Heater & air-conditioner, automatic	•	•
Flexible antenna	•	•
Radio with AUX, USB Jack and Bluetooth	•	•
Cab, all-weather sound suppressed, includes:		
Cup holders	•	•
Door locks	•	•
Tinted glass	•	•
Floor mat	•	•
Horn	•	•
Large storage area	•	•
Pull-up type front window	•	•
Removable lower windshield	•	•
Seat belt	•	•
Safety glass	•	•
Sun screens, front, roof, rear	•	•
Windshield wiper with intermittent feature	•	•
Rear view camera	•	•
Straight travel pedal	•	•
Master key	•	•
Undercarriage		
Under cover	•	•
Hydraulic track adjusters	•	•
Greased and sealed track link	•	•
Track Guard	•	•
Digging equipment		
4.6 m / 15' 1" mono boom	•	
5.7 m / 18' 8" mono boom		•
2.5 m / 8' 2" arm	•	
2.9 m / 9' 6" arm		•
Linkage	•	•
Manual centralized lubrication	•	•
Service		
Tool kit, daily maintenance	•	•

OPTIONAL EQUIPMENT

	ECR145E	ECR235E
Engine		
Block heater: 120 V or 240 V	•	•
Diesel coolant heater, 5 kW	•	•
Water separator with heater	•	•
Auto engine shutdown	•	•
Tropical cooling system	•	•
Reversible cooling fan	•	•
Electric		
Extra work lights (Halogen or LED):		
Cab-mounted 2 (front 1, rear 1)	•	•
Counterweight-mounted 1	•	•
Anti-theft system	•	•
Rotating warning beacon	•	•
Hydraulic system		
Boom hose rupture valve with overload warning device	•	•
Arm hose rupture valve	•	•
Boom float function with HRV	•	•
Boom float function without HRV	•	•
Pilot control pattern change	•	•

OPTIONAL EQUIPMENT

	ECR145E	ECR235E
Hydraulic system		
Hydraulic piping:		
Work tool management system (up to 20 programmable memories)	•	•
Breaker & shear, 1 or 2 pump flow	•	•
Slope & rotator (40 lpm / 11 gpm or 60 lpm / 16 gpm)	•	•
Extra for slope & rotator	•	•
Grapple	•	•
Oil leak (drain) line	•	•
Quick coupler	•	•
Breaker & shear pressure pre-setting	•	•
Volvo hydraulic quick coupler S1 with hook / S1 without hook		•
Volvo hydraulic quick coupler S6 with hook / S6 without hook	•	
Volvo hydraulic quick coupler Universal U22		•
Volvo hydraulic quick coupler Universal U14	•	
Hydraulic oil, biodegradable 46	•	•
Hydraulic oil, ISO VG 46, 68	•	•
Hydraulic oil, longlife oil 32, 68	•	•
Cab and interior		
ROPS (ISO12117-2) certified cab with fixed hatch	•	•
Fabric seat without heater	•	•
Fabric seat with heater and air suspension	•	•
Control joysticks with semi-long	•	•
Control joysticks with 3 switch & 1 proportional roller	•	•

	ECR145E	ECR235E
Cab and interior		
Cab-mounted falling object guard (FOG)	•	•
Cab-mounted falling object protective structure (FOPS)	•	•
Anti-vandalism kit	•	•
Safety net for front window	•	•
Side view camera	•	•
Smoker kit (ashtray and lighter)	•	•
Sunlight protection, roof (steel)	•	•
Rain shield	•	•
Specific key	•	•
Undercarriage		
Dozer blade	•	•
500 mm / 20" shoe with triple grousers	•	
600 mm / 24" shoe with triple grousers	•	•
HD 600 mm / 24" shoe with triple grousers	•	•
700 mm / 28" shoe with triple grousers		•
HD 700 mm / 28" shoe with triple grousers	•	
750 mm / 30" shoe with triple grousers	•	
800 mm / 32" shoe with triple grousers		•
900 mm / 36" shoe with triple grousers		•
500 mm / 20" shoe with rubber grousers	•	
700 mm / 28" shoe with double grousers		•
600 mm / 24" shoe with rubber grousers		•
Full track guard		•
Digging equipment		
4.72 m / 15' 6" 2-piece boom	•	
5.57 m / 18' 3" 2-piece boom		•
2.1 m / 6' 11", 3.0 m / 9' 10" arm	•	
2.5 m / 8' 2" arm		•
Linkage with lifting eye	•	•
Service		
Tool kit, compact	•	•

Selection of Volvo optional equipment

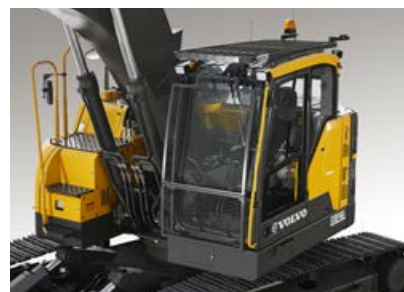
Side view camera



Anti-vandal kit



Safety net



LED lights



Dozer blade



Two piece boom



Not all products are available in all markets. Under our policy of continuous improvement, we reserve the right to change specifications and design without prior notice. The illustrations do not necessarily show the standard version of the machine.

VOLVO

Volvo Construction Equipment

www.volvoce.com/na